

Matrix Technical Support Mailer-7

PRE-REQUISITES OF COSEC SOFTWARE INSTALLATION

Dear Friends,

This document contains the information regarding the important points to be taken care of before installing the COSEC software.

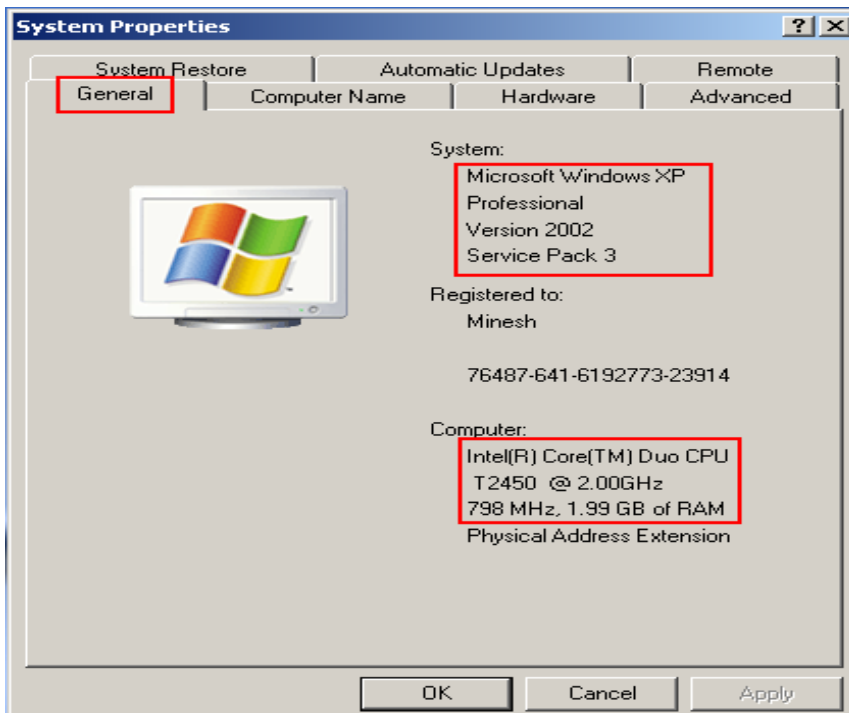
The computer on which the COSEC software is installed should meet the following requirements:

1. OS (Operating System) :- Microsoft Windows XP Professional/Vista (Ultimate or Business) / Windows 7 (Ultimate or Business) / 2003 Server /Win 2008 R2 64 bit versions.
2. RAM :- 1GB minimum recommended.
3. Hard Disk :- 40 GB minimum recommended.
4. Processor :- Pentium 4 at 1.8 GHz or Higher.
5. Screen Resolution :- minimum 1024X768.
6. 48XDVD/CD ROM Drive.
7. Network Interface Card :- 10/100 Base T network adaptor.
8. IIS (Internet Information Service) Version 5.1 or Higher.
9. Microsoft Framework Version 3.5
10. Browser :- Internet Explorer 6 or higher.

We will now see the stepwise approach to install the software.

STEP 1: PC Configuration

First of all see the Operating System Version by right clicking on the My Computer→Property.



If it is the professional Edition or higher then you continue and if it is a **Home Edition** then the software will not be installed because Home Edition does not support IIS which is used for hosting the COSEC web application.

Verify that it has enough amounts of RAM and Processor speed as per the recommendation.

Make sure that PC login is as an **Administrator** because for installing the software full Administrative privileges are required.

On the following OS (Operating System) the Software can be installed.

- Windows XP Professional or higher (X32 or X64)
- Windows Vista Ultimate/Business/or higher. (X32 or X64)
- Windows 7 Ultimate/Business/or higher. (X32 or X64)
- Windows Server 2003 Standard/Ultimate/Business/or higher. (X32 or X64)
- Windows Server 2008 R2 (X64)

If the PC will meets the above requirements then and then go for the next step.

STEP 2 : Installing the IIS

For Windows XP or Server 2003, OS (Operating System) CD is required as files which are needed to install the IIS are found in I386 folder in Windows OS CD.

For Windows OS (Windows XP or Server 2003), OS CD must be required and it should be available from the customer end.

In case of Vista/Windows 7/Server 2008 R2, only IIS is required to be enabled from “Turn Windows Feature On/Off” option available in Control Panel. Windows OS CD is not needed for this.

STEP 3 : Installing Microsoft SQL and .Net Framework

Check the SQL and Microsoft .Net Framework in “Add or Remove program” in the PC.

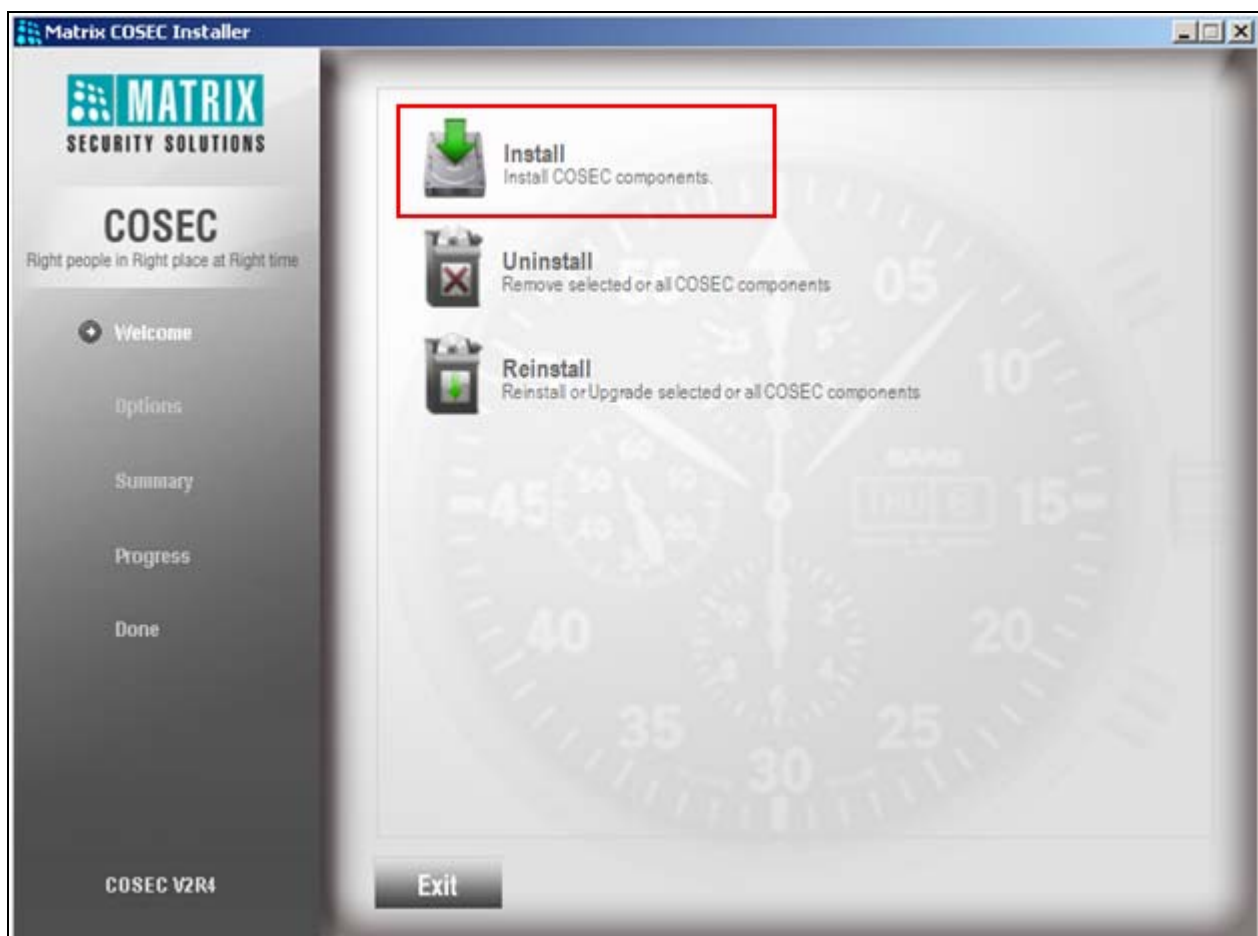
If the customer has already installed the SQL then there is no need to install the SQL from the COSEC installer CD.

Make sure that the SQL server supports SQL Authentication.

STEP 4: Run the COSEC Installer

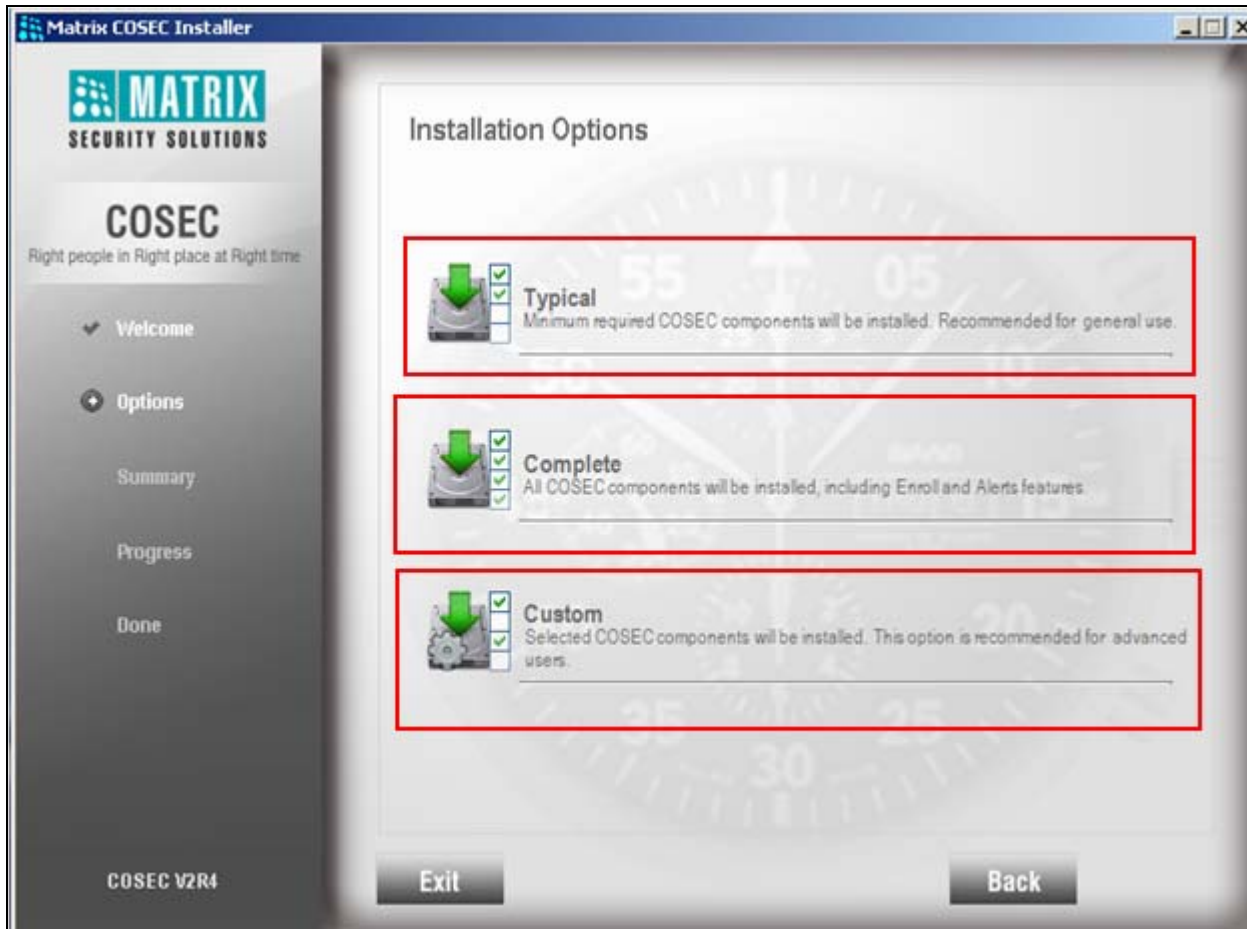
Insert COSEC installation CD in CD drive and open it.

It will show the below screen.



If the software is already installed and want to upgrade then click on “Reinstall” and if it is a fresh installation then click on “Install”.

Below screen will be appeared after selecting required installation option.



As shown above you will find three options: Typical, Complete or Custom.

Typical : Installs minimum components required to run the Application.

Complete : Installs all the components of the COSEC Application.

Custom : Allows the installer to select the components to be installed.

Following screenshot show the pictorial view of the above installation options.

Typical Installation

The following COSEC components will be Installed:

- ➔ Microsoft SQL Express 2005 SP3
- ➔ COSEC Security Service
- ➔ Crystal Reports 2008 Runtime SP2
- ➔ COSEC Web
- ➔ COSEC Monitor

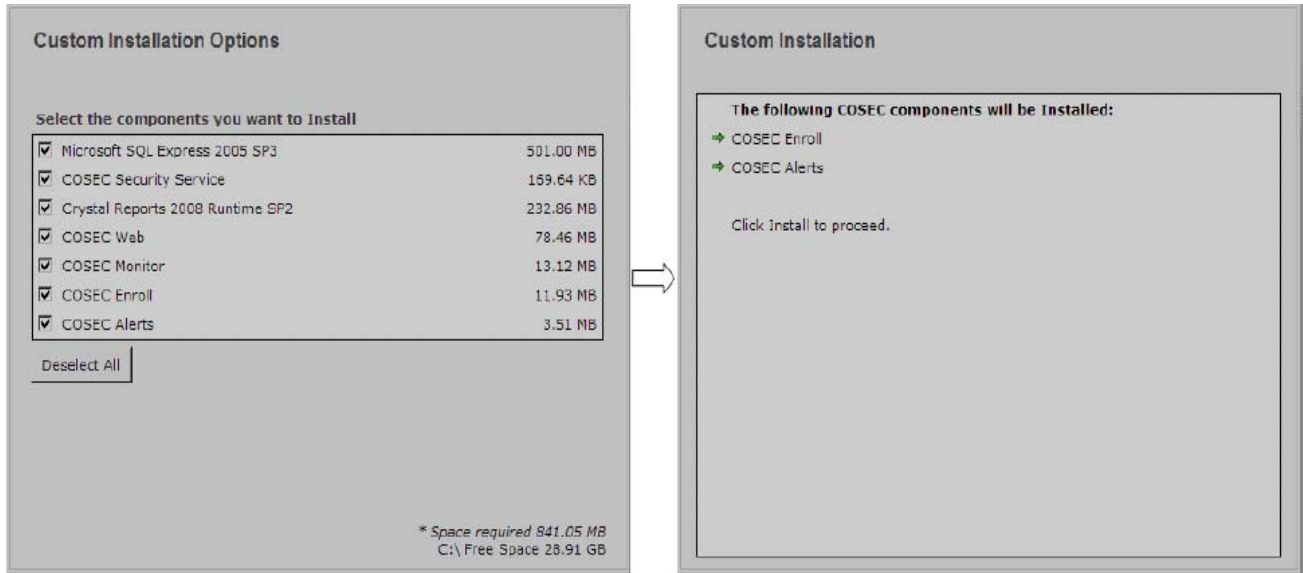
Click Install to proceed.

Complete Installation

The following COSEC components will be Installed:

- ➔ Microsoft SQL Express 2005 SP3
- ➔ COSEC Security Service
- ➔ Crystal Reports 2008 Runtime SP2
- ➔ COSEC Web
- ➔ COSEC Monitor
- ➔ COSEC Enroll
- ➔ COSEC Alerts

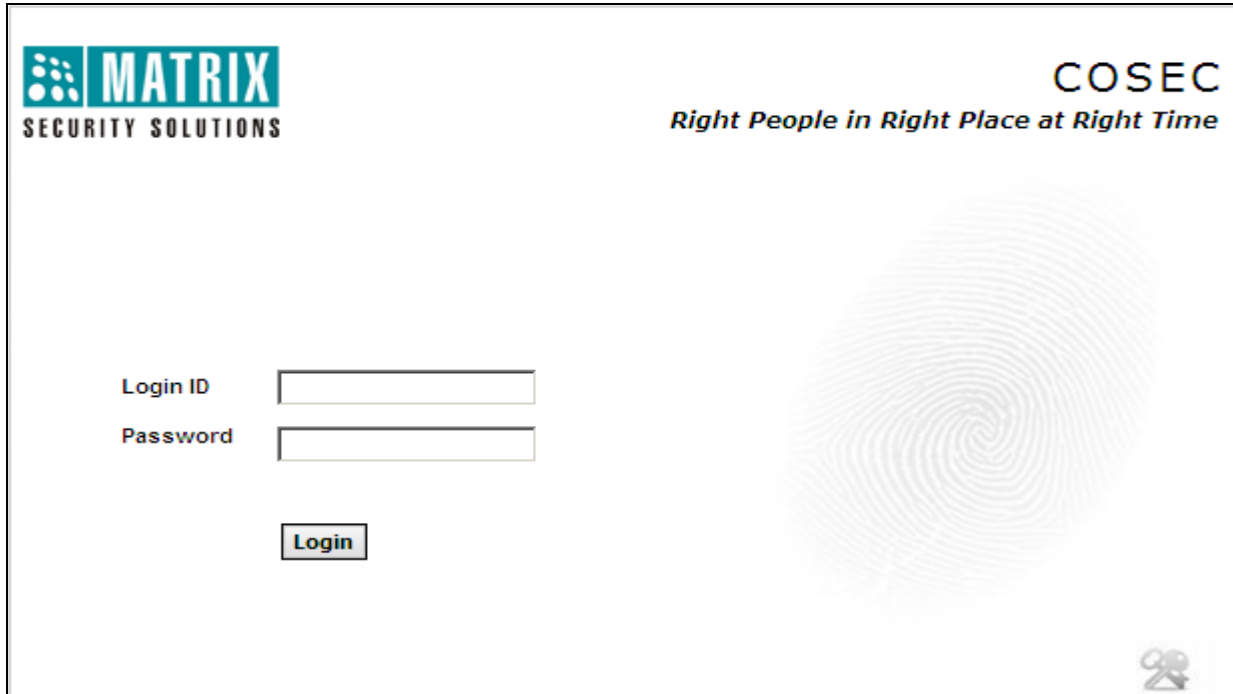
Click Install to proceed.



STEP 5:

After successful installation of the software open the web page from the desktop shortcut and configure the software as per requirement.





MATRIX
SECURITY SOLUTIONS

COSEC
Right People in Right Place at Right Time

Login ID

Password

For login, default login ID is sa and keep the password blank. System will ask to set the new password.

Thanks & Regards,

Technical Support Team – Security Product

Matrix ComSec, Waghodia, India

E-mail: support@MatrixComsec.com

Disclaimer: The information contained in this e-mail and/or attachments to it may contain confidential or privileged information. Unauthorized use, disclosure or copying is strictly prohibited and may constitute unlawful act and can possibly attract legal action, civil and/or criminal. The contents of this message need not necessarily reflect or endorse the views of Matrix Telecom Pvt. Ltd on any subject matter. Any action taken or omitted to be taken based on this message is entirely at your risk. Neither the originator of this message nor Matrix Telecom Pvt. Ltd takes any responsibility or liability towards the same. If you are not the intended recipient, please notify us immediately and permanently delete the message.