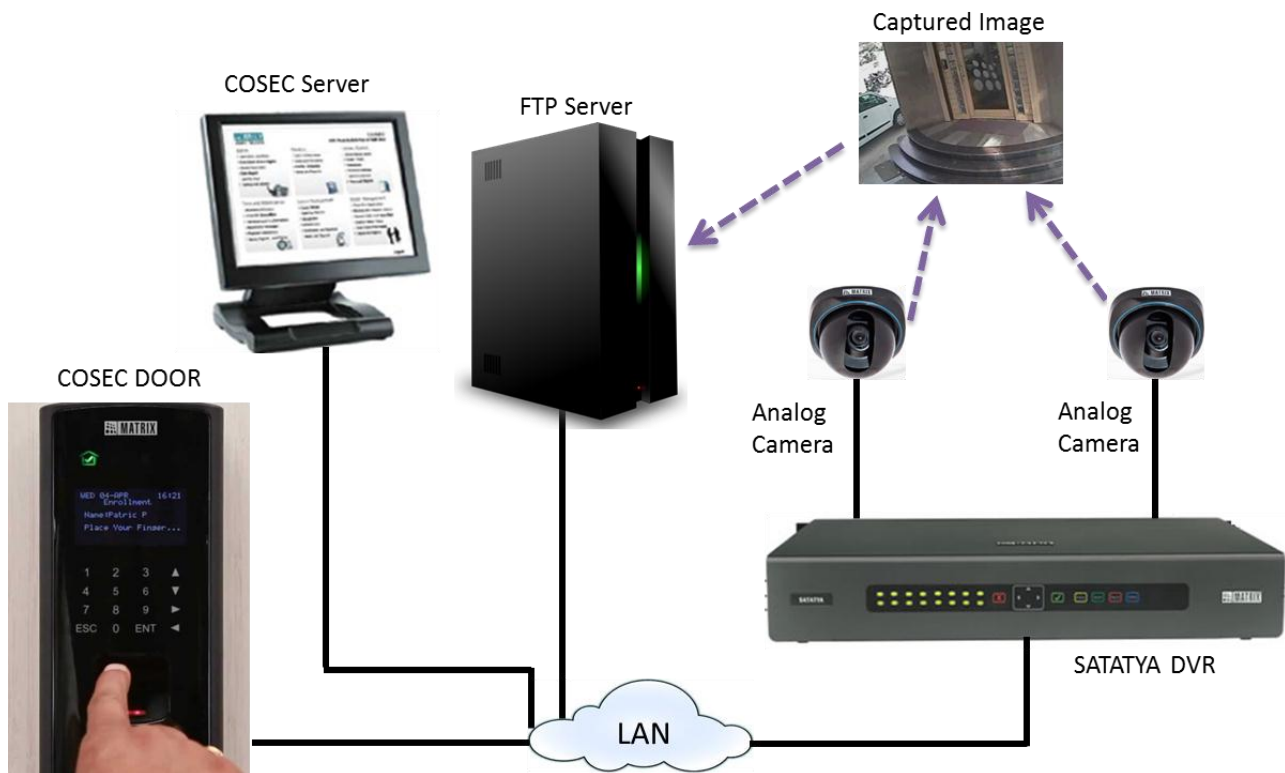


Matrix Technical Support Mailer – 43_b

SATATYA DVR V2 Integration with COSEC V6

Dear Friends,

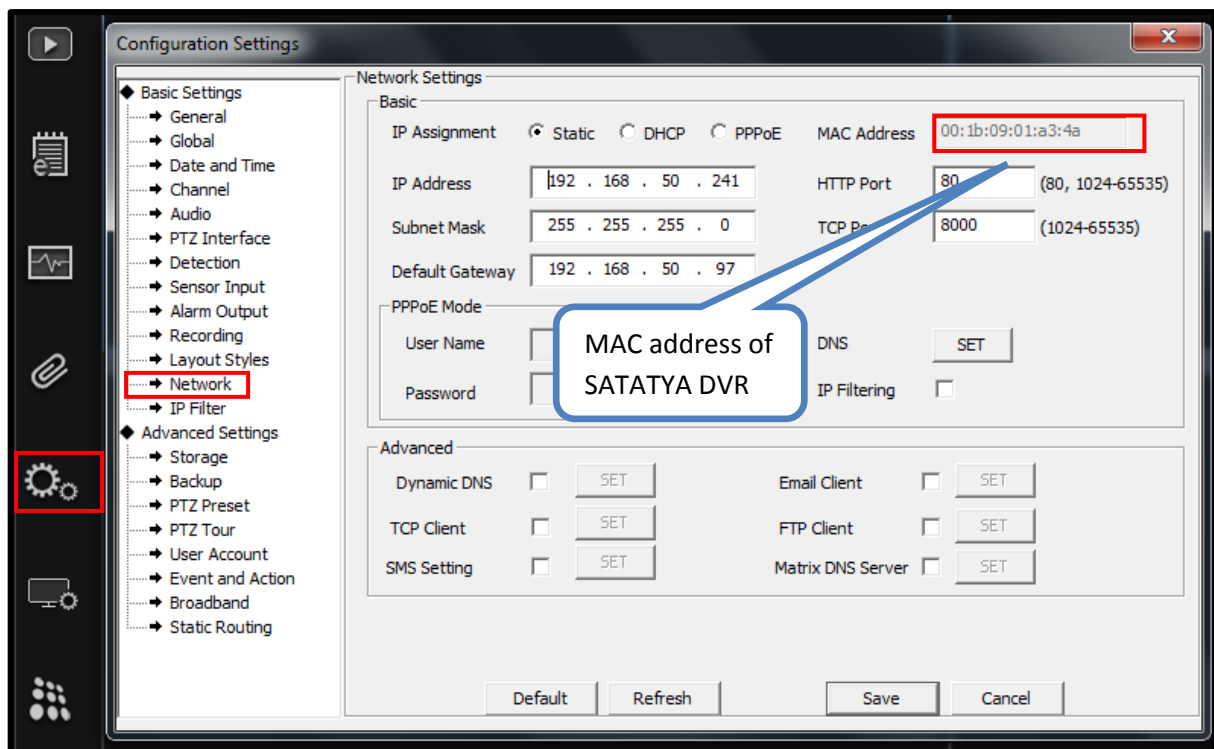
Matrix COSEC provides a comprehensive and complete solution for Time Attendance and Access Control. This mailer will help Matrix installer to integrate Matrix SATATYA DVR (Digital Video Recorder) with COSEC system.



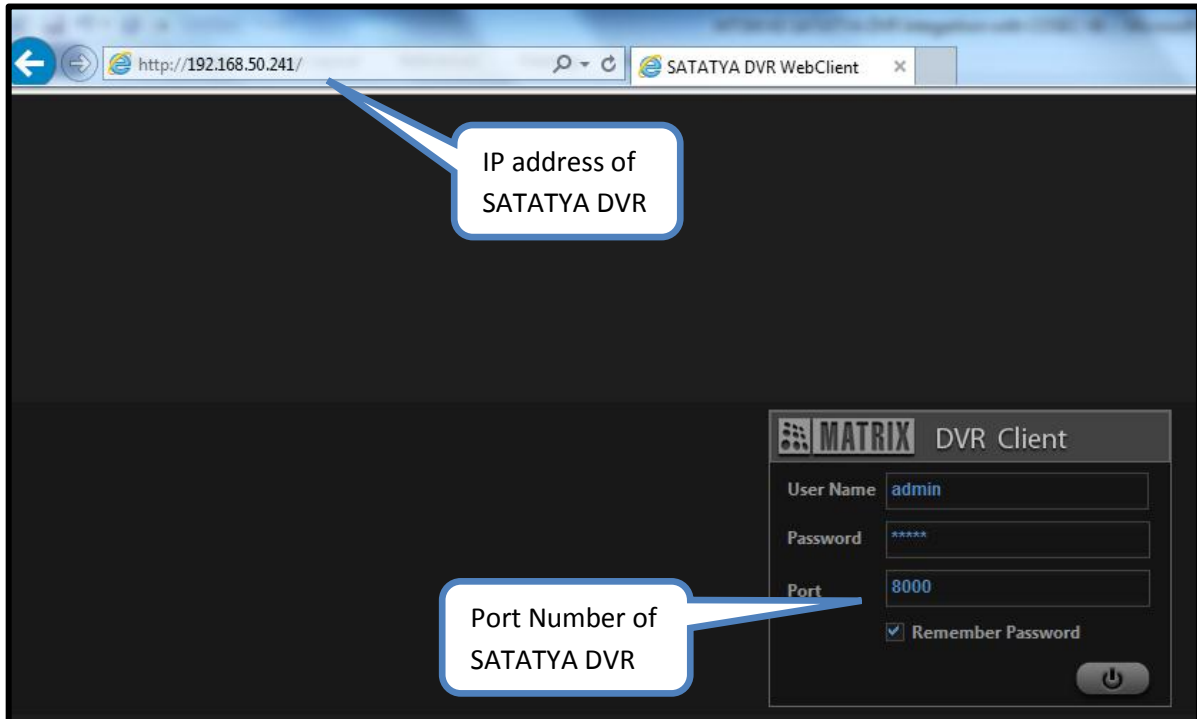
- The COSEC system provides interfaces with the Matrix SATATYA DVR and enables the users to grab images as well as video triggered by different events at the respective devices.
- Complete procedure of SATATYA DVR Integration with COSEC is explained further.

Prerequisites for configuration:

1. Make sure that COSEC DOOR, COSEC Server, FTP Server and SATATYA DVR are in the same subnet or if they are on the public network then make sure that they are accessible to each other.
2. Create FTP server in Local/public Network and it should be accessible by COSEC DOOR and SATATYA DVR.
<http://www.youtube.com/watch?v=nWpZkhXnhds> (Watch this link to learn **How to create FTP Server in windows?**)
3. Know the MAC address of SATATYA DVR.

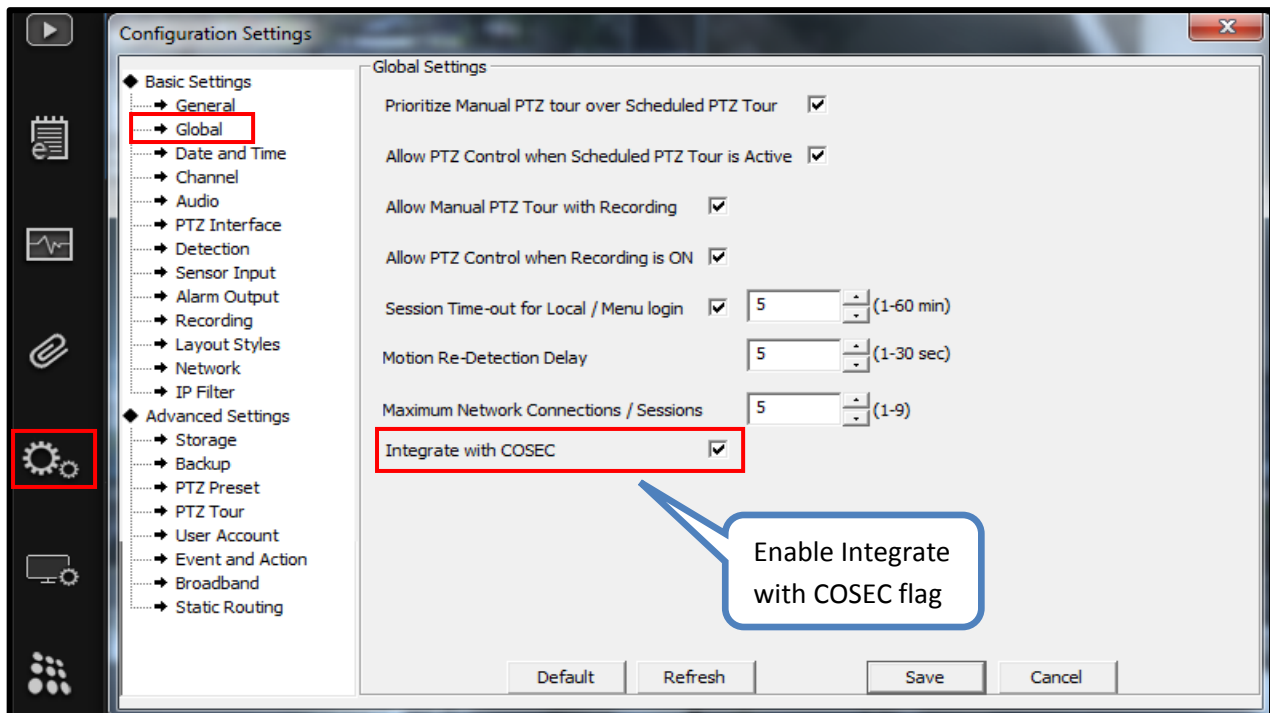


4. Know the IP address and TCP Port number of SATATYA DVR (Default IP address of SATATYA DVR is 192.168.1.123 and default TCP/Login port is 8000).

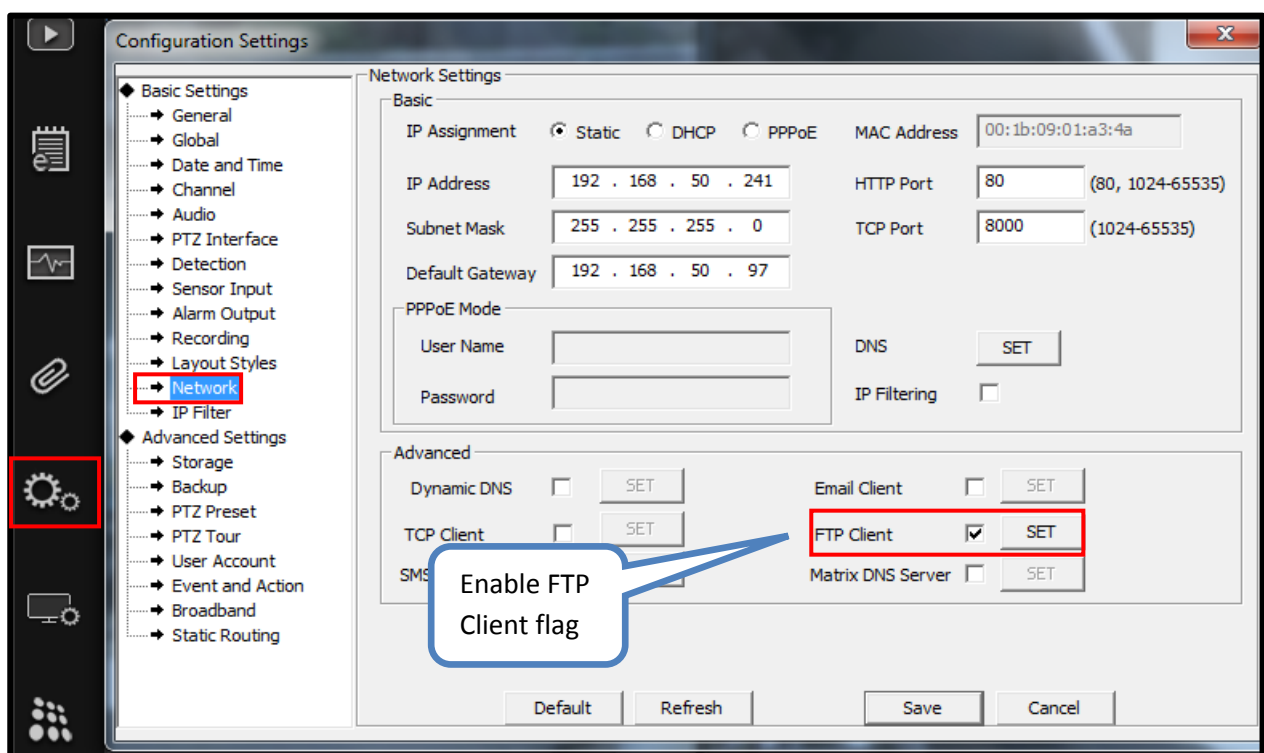


To Configure COSEC parameters in SATATYA DVR, follow mentioned steps:

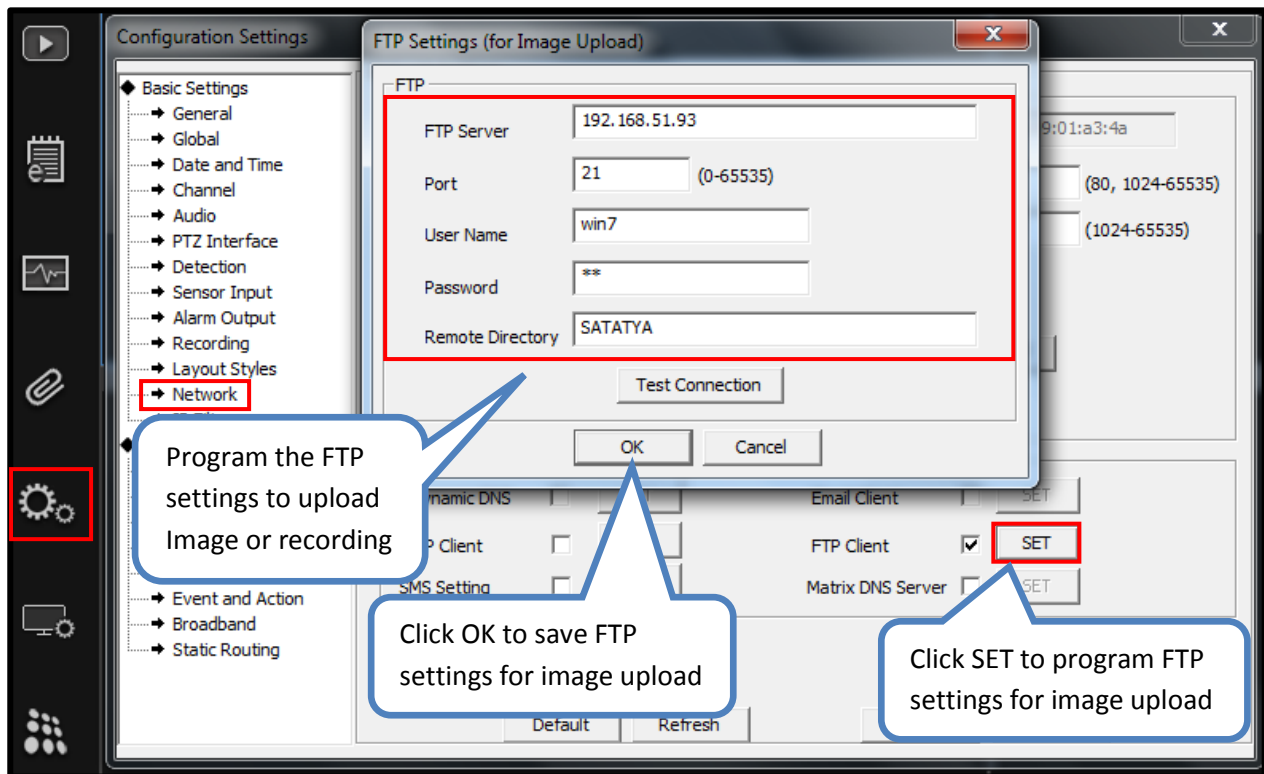
1. Check **Integrate with COSEC** checkbox under **Device Configuration → Basic Settings → Global**.



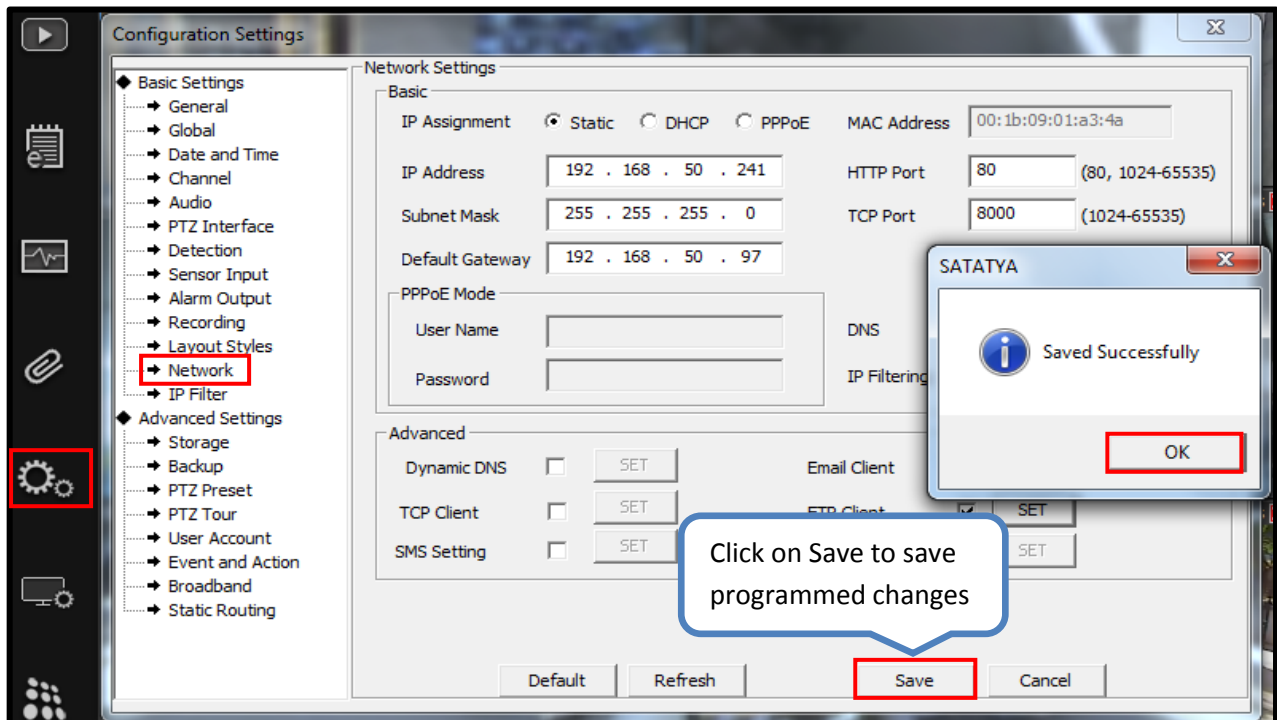
2. Enable **FTP Client** flag under **Device Configuration → Basic Settings → Network**.



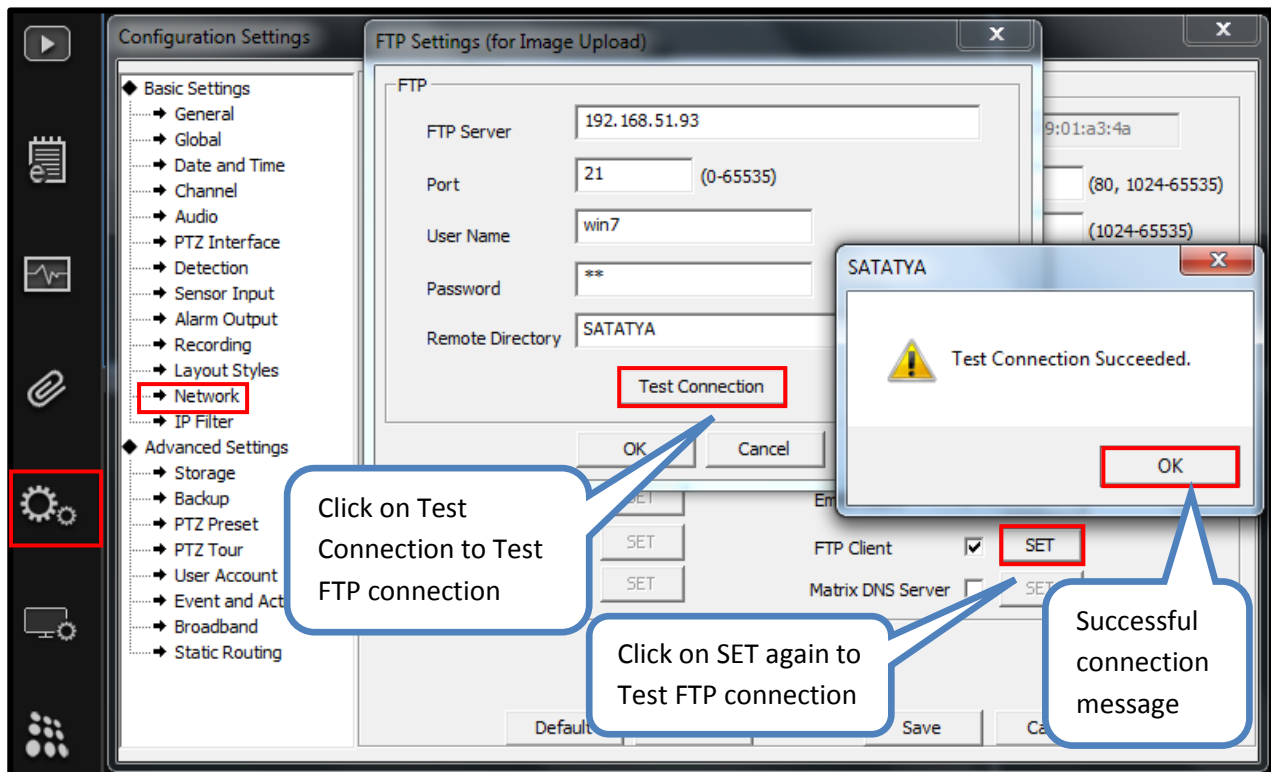
3. To program the FTP client details click on SET button besides FTP client field under **Device Configuration** → **Basic Settings** → **Network** and program required details (Root folder Path to be defined in COSEC: <ftp://192.168.51.93/SATATYA> because remote directory SATATYA will be created automatically while Testing the FTP Connection for Image upload).



4. Click on **Save** to save configuration changes.

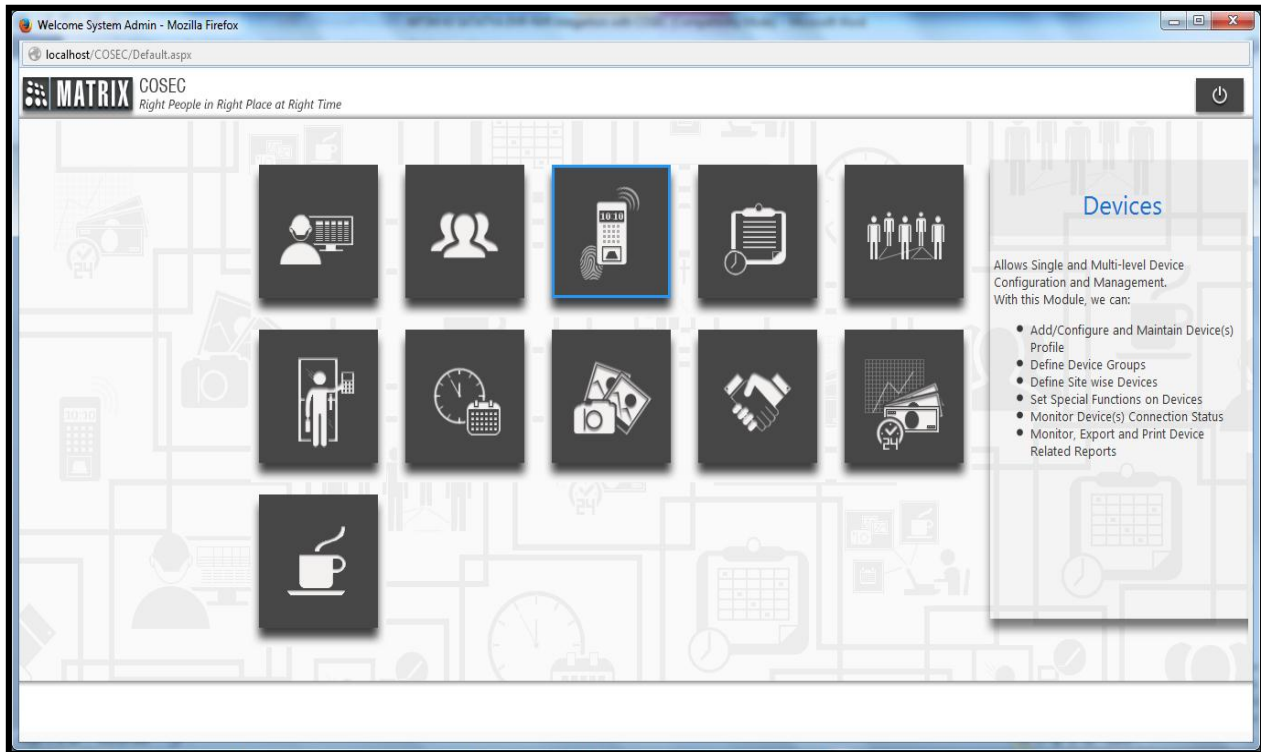


5. Test the programmed FTP connection with the **Test Connection** option.

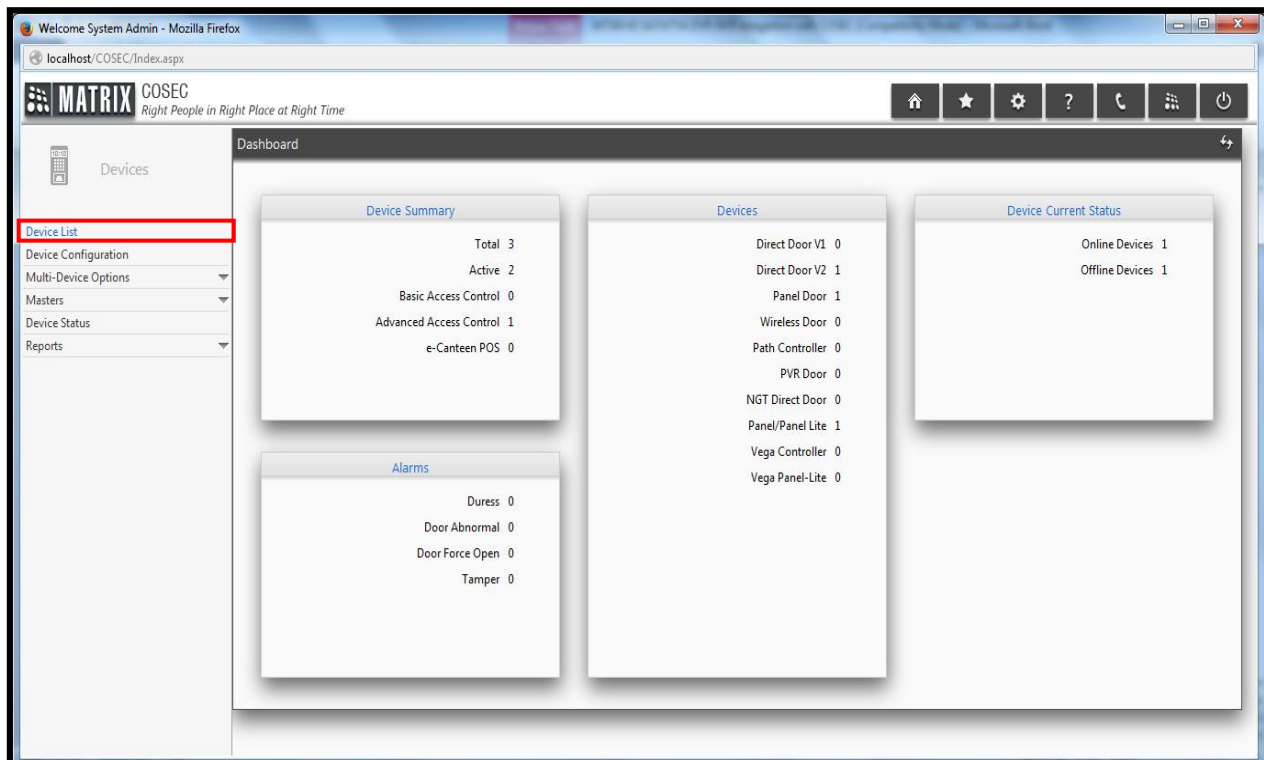


To Configure SATATYA DVR parameters in COSEC, follow mentioned steps:

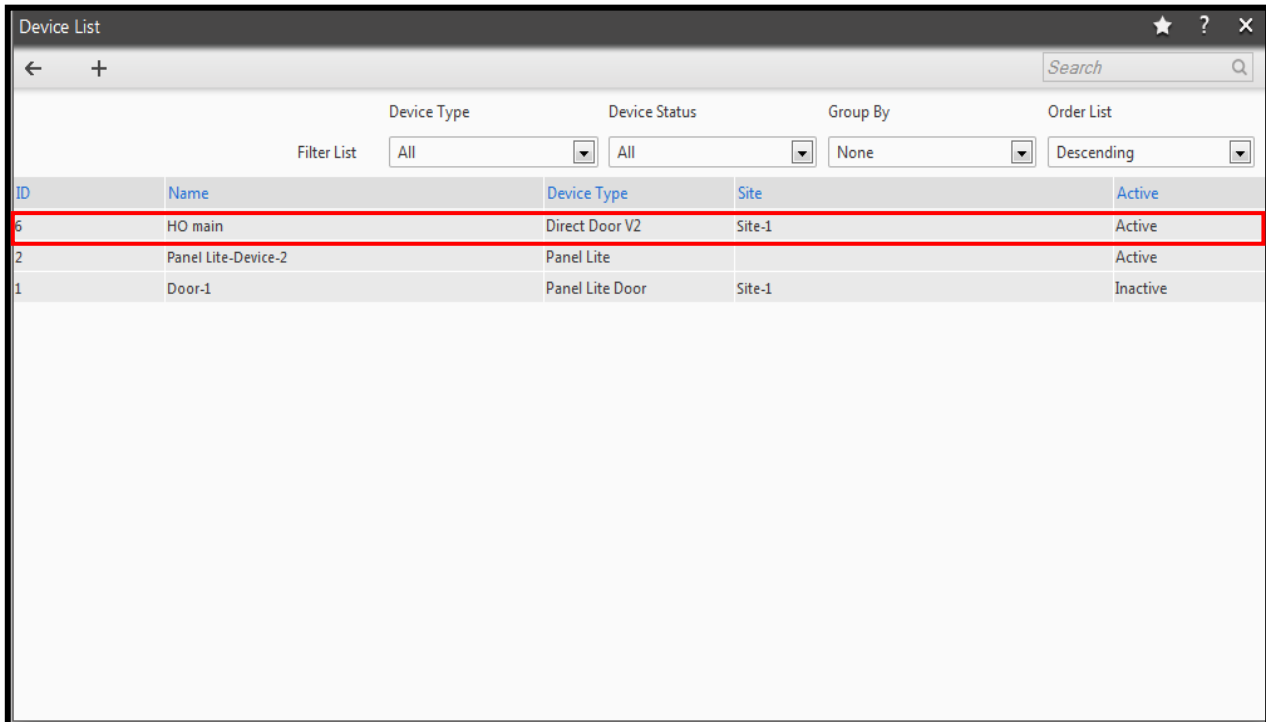
1. Go to Devices module.



2. Click on Device List.



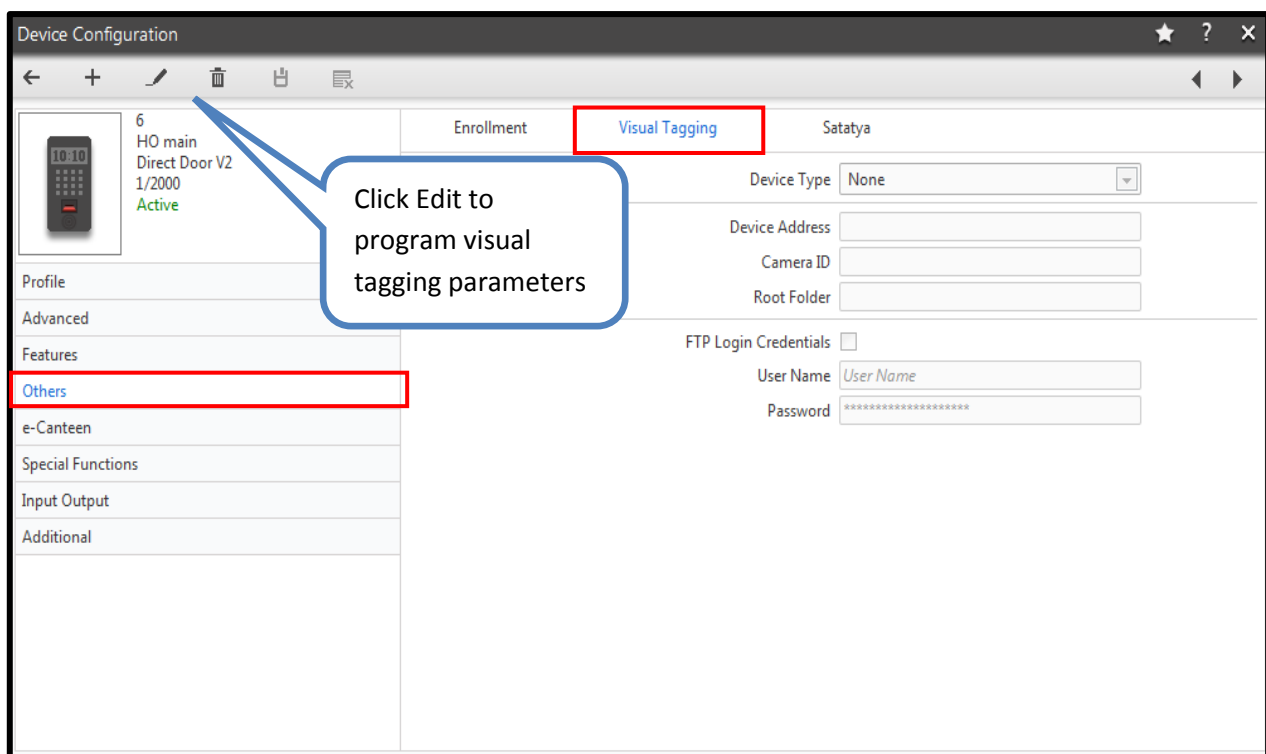
3. Click on the particular door to go to the door parameters.



ID	Name	Device Type	Site	Active
6	HO main	Direct Door V2	Site-1	Active
2	Panel Lite-Device-2	Panel Lite		Active
1	Door-1	Panel Lite Door	Site-1	Inactive

4. Go to **other parameters**.

- Here, user will get **Visual Tagging** option to configure COSEC-SATATYA integration settings.



Click Edit to program visual tagging parameters

Visual Tagging

Device Type: None

Device Address:

Camera ID:

Root Folder:

FTP Login Credentials: ☐

User Name: User Name

Password:

Others

5. Program parameters as per below screenshot for COSEC – SATATYA integration and save the configuration parameters.

The screenshot shows the 'Device Configuration' window for a 'Satatya' device. The window has a sidebar on the left with a list of configuration categories: Profile, Advanced, Features, Others, e-Canteen, Special Functions, Input Output, and Additional. The main area is divided into three tabs: 'Enrollment', 'Visual Tagging', and 'Satatya'. The 'Satatya' tab is active. A blue callout bubble points to a 'Save' icon in the top toolbar, with the text 'Click Save to save the configuration'. A red rounded rectangle highlights the configuration fields for the 'Satatya' device. The fields are: Device Type (Matrix DVR/NVR/HVR), Device Address (00_1b_09_01_a3_4a), Camera ID (01), Root Folder (ftp://192.168.51.93/SATATYA), FTP Login Credentials (checked), User Name (win7), Password (masked with dots), Integration Type (Network), Active (checked), Network Connection (Ethernet), IP Address (192 . 168 . 050 . 241), and Port Number (8000).

Device Type: Select **Matrix DVR/NVR/HVR** in the device type option.

Device Address: Specify the MAC address of the video recorder device (SATATYA DVR) using “_” (underscore) as the separator.

Camera ID: Define camera ID as 01 to 16 (Channel number of camera connected to SATATYA DVR).

Root Folder: In Root Folder specify the ftp folder path to store or upload image captured by camera on predefined events (Root folder Path to be defined in COSEC: <ftp://192.168.51.93/SATATYA> because remote directory **SATATYA** was created automatically while testing FTP client connection for Image upload in SATATYA DVR).

FTP Login Credentials: Specify **User Name** and **Password** credentials for FTP login if required.

Integration Type: Select Integration type as **Network**.

Active: Enable checkbox for Active.

Network Connection: Select Network Connection as Ethernet.

IP Address: Define the IP Address of SATATYA DVR.

Port: Define the TCP port number of SATATYA DVR.

6. In **SATATYA** option user can configure different event & action. Program the required parameters.

Device Configuration

6 HO main Direct Door V2 1/2000 Active

Enrollment Visual Tagging **Satatya**

Click on Edit to program Satatya Parameters

Profile
Advanced
Features
Others
e-Canteen
Special Functions
Input Output
Additional

Name
Active
Schedule From Time To Time
Days Sun Mon Tue Wed Thu Fri Sat Holiday
Event Access Allowed
Mode Both
Action Recording
Duration Min.
Camera 1 2 3 4 5 6 7 8 9 10 11 12 13 14 15 16
Add Cancel

Device Configuration

6 HO main Direct Door V2 1/2000 Active

Enrollment Visual Tagging **Satatya**

Click Save after adding configuration

Profile
Advanced
Features
Others
e-Canteen
Special Functions
Input Output
Additional

Name Test
Active ☒
Schedule 00:00 23:59
Days Sun Mon Tue Wed Thu Fri Sat Holiday
Event Access Allowed
Mode Both
Action Upload Image
Camera 1 2 3 4 5 6 7 8 9 10 11 12 13 14 15 16
Add Cancel

Click on Add to add configuration

Name: Specify the desired name as reference for integration.

Active: Enable checkbox for Active.

Schedule: Define the time schedule for the event with start time and end time (24 hour format) along with applicable days.

Event: Define the event from the drop down list. The options available are:

- ✓ Access Allowed
- ✓ Access Denied
- ✓ Invalid User
- ✓ Aux Input
- ✓ Duress Alarm
- ✓ Door Abnormal Alarm
- ✓ Door Force Open Alarm
- ✓ Tamper Alarm

Mode: Select the event mode from the drop down list. The options available are:

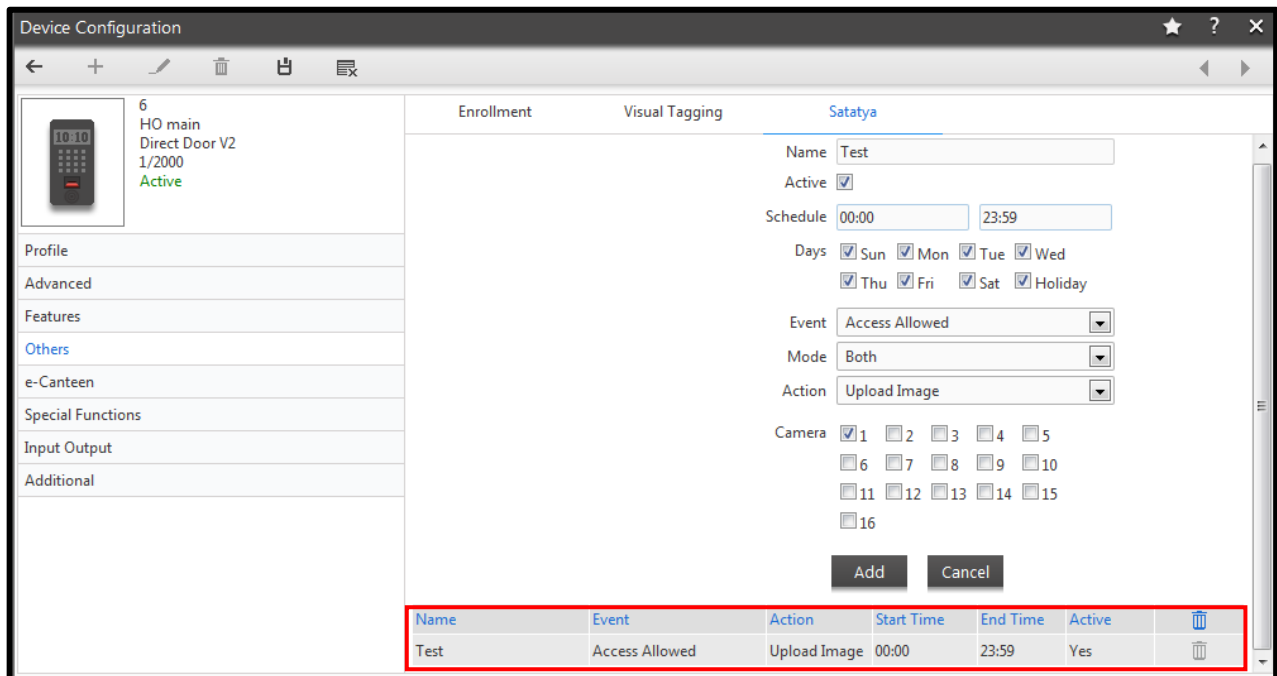
- ✓ Entry
- ✓ Exit
- ✓ Both


Action: Select the action from the drop down list. The options available are:

- ✓ **Recording:** Specify the duration in minutes.
- ✓ **Upload Image:** This will upload the Image as per the FTP settings.
- ✓ **Video Pop – up:** Specify the video Pop – up.
- ✓ **PTZ Preset:** Specify the PTZ position number as defined on the SATATYA DVR.
- ✓ **Mail Image:** Image will be sent to Specified mail ID.

Camera: Specify the relevant camera details depending on the action selected.

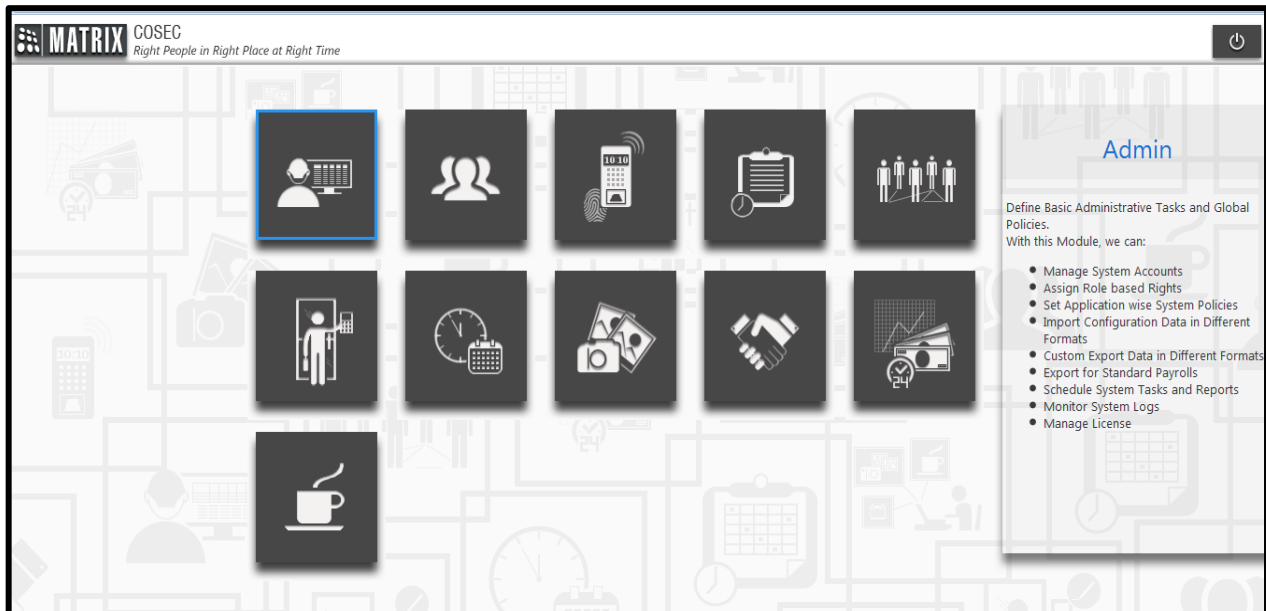
➤ Clicking on **Add** will add the event to the list as shown in the below image.



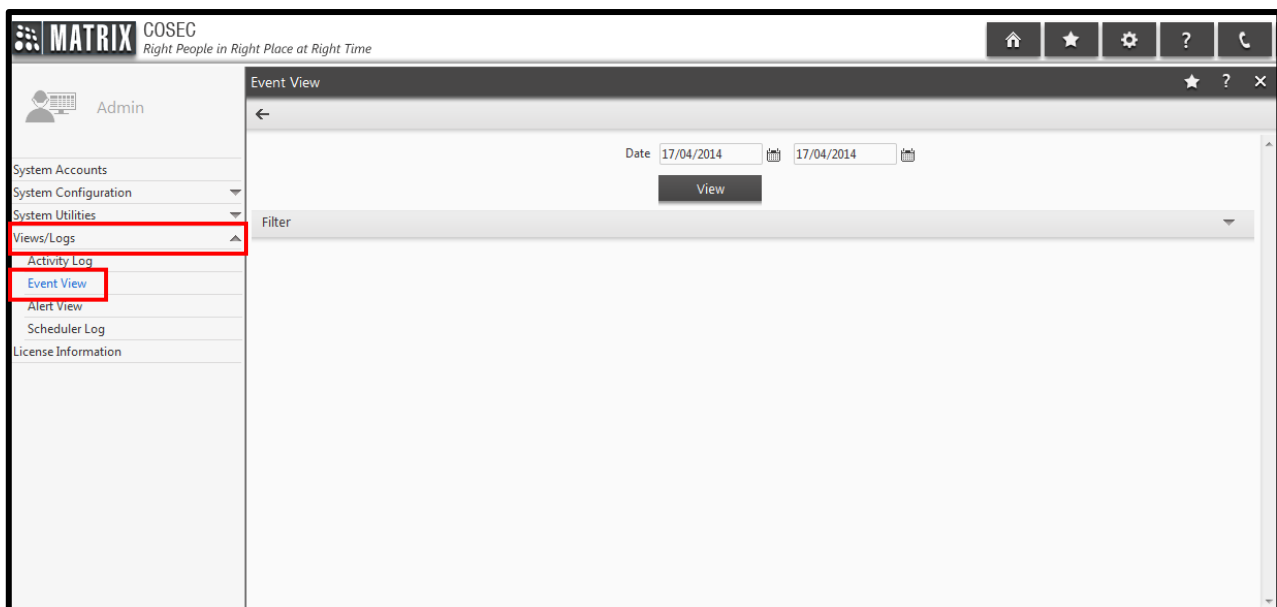
Name	Event	Action	Start Time	End Time	Active	
Test	Access Allowed	Upload Image	00:00	23:59	Yes	

Event View in COSEC:

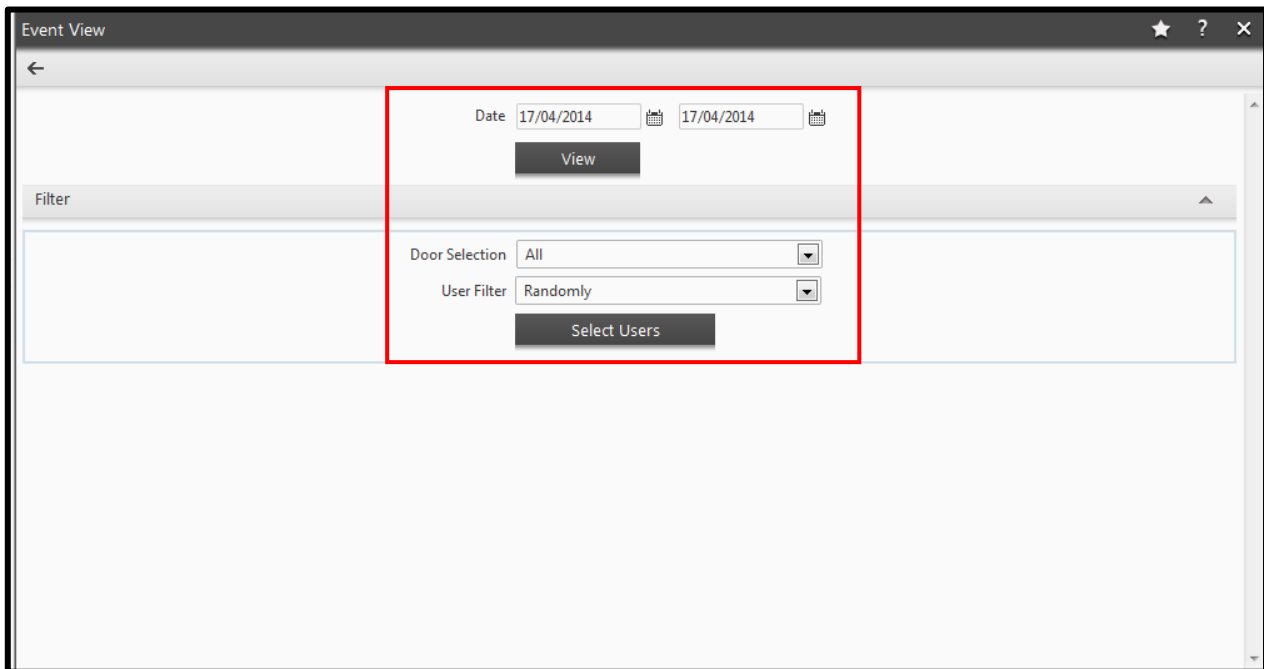
1. User events and related images/videos can be seen from the Event View option in the Admin module.



2. To access this functionality, go to **Admin → Views/Logs → Event View**.



3. Set the filter parameters for **Door** and **User** and define the **Start date** and **End date** to view the list of events.



Event View

Date 17/04/2014 17/04/2014

View

Filter

Door Selection All

User Filter Randomly

Select Users

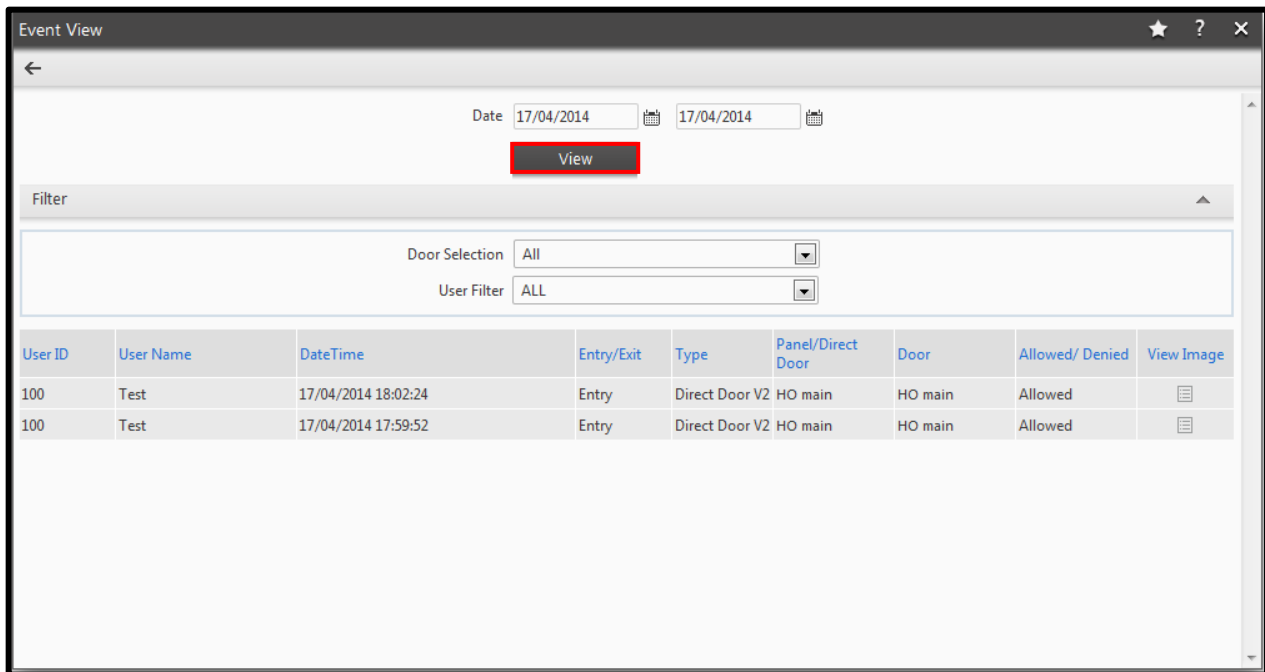
Door Selection:

- **All:** View events from all doors
- **Selected:** View events from the selected doors only

User Filter:

- **All:** View events from all users
- **Select Group:** View events from the selected groups
- **Randomly:** View events from the Randomly Selected Users

4. Click on **View** button to view the list of events.



5. From the list click on view Image button for particular user event to see uploaded image.

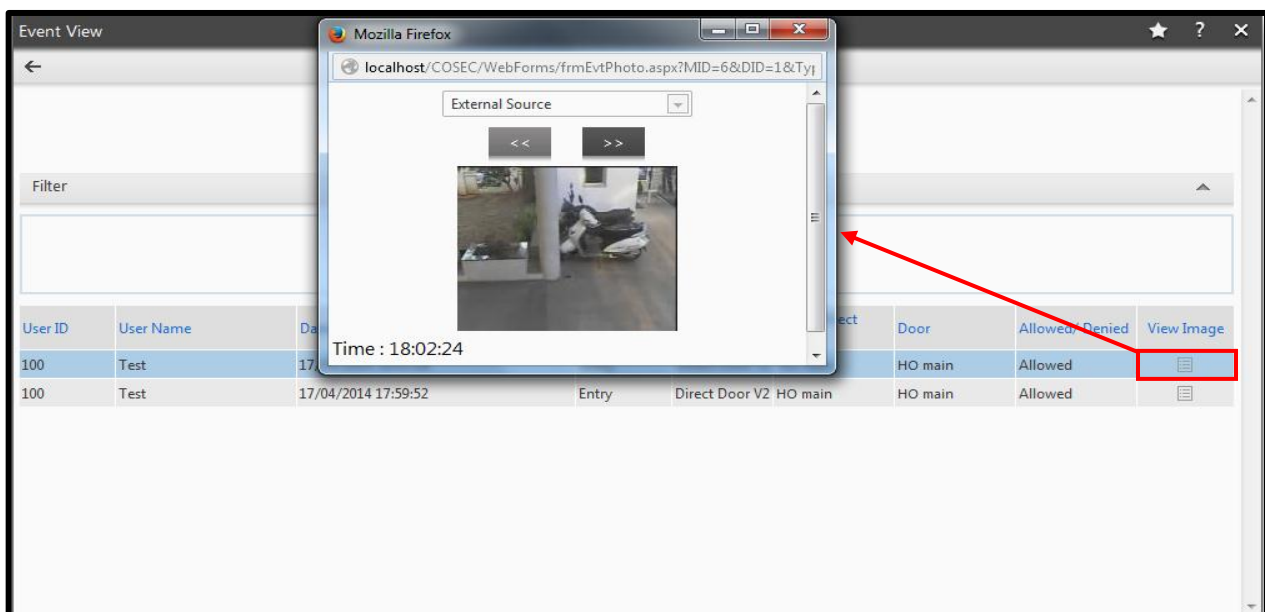
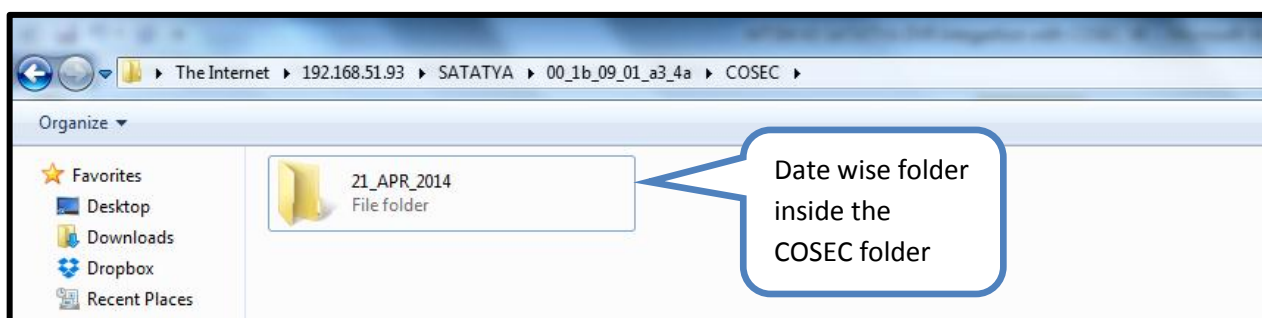
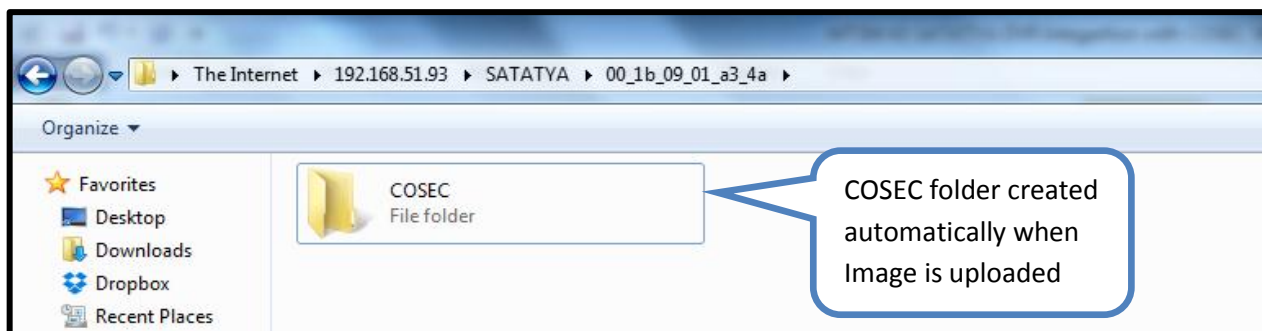
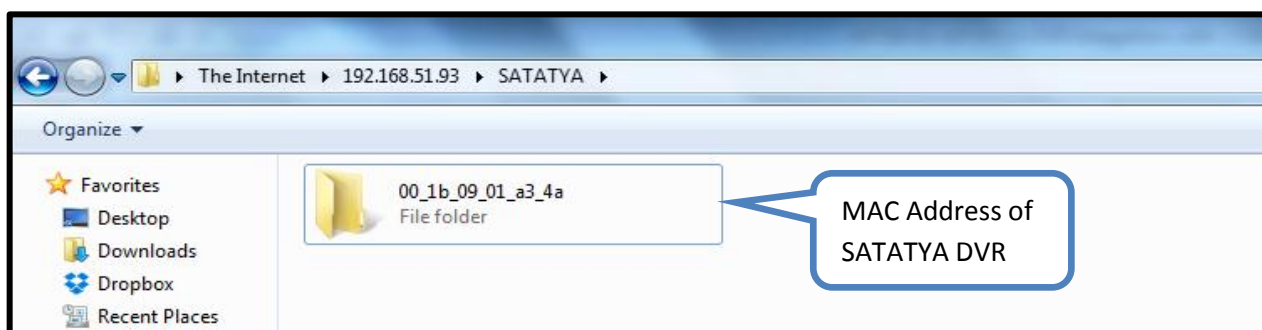
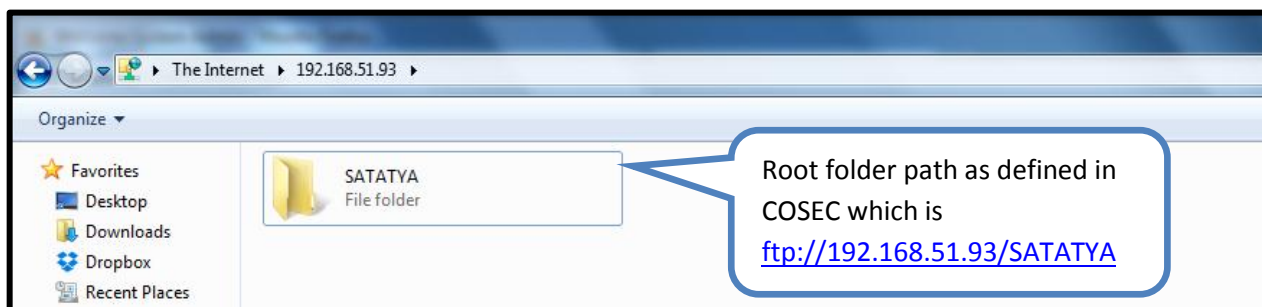
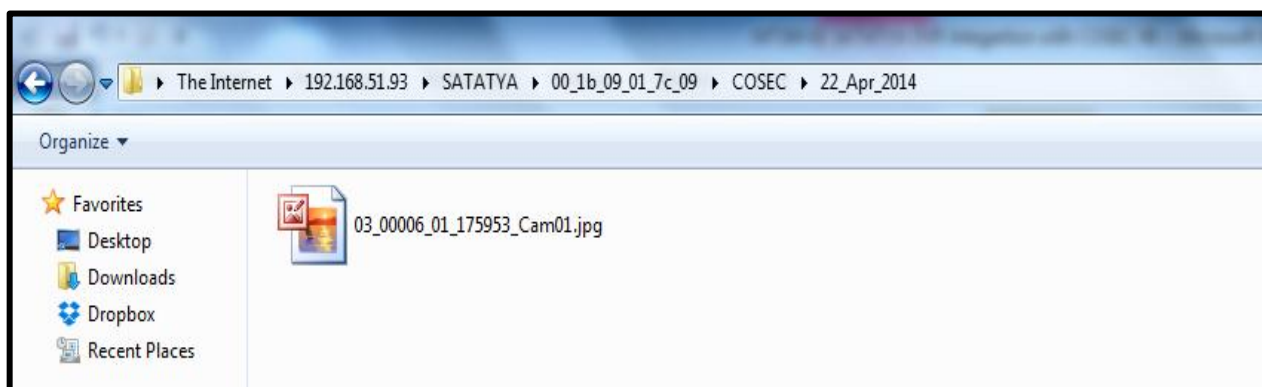


Image uploaded on FTP:





File name Specification:

03 – Device Type

00006 – Master Controller ID

01 – Door Controller ID

175953 – Time

Cam01 – Camera Number

In this way user can integrate Matrix SATATYA DVR with COSEC.

Technical Training Team

Training@MatrixComSec.com

Disclaimer: The information contained in this e-mail and/or attachment may contain confidential or privileged information. Unauthorized use, disclosure or copying is strictly prohibited and may constitute unlawful act and can possibly attract legal action, civil and/or criminal. The contents of this message need not necessarily reflect or endorse the views of Matrix Comsec Pvt Ltd on any subject matter. Any action taken or omitted on this message is not entirely at your risk and the originator of this message nor does Matrix Comsec Pvt Ltd take any responsibility or liability towards the same. If you are not the intended recipient, please notify us immediately and permanently delete the message.