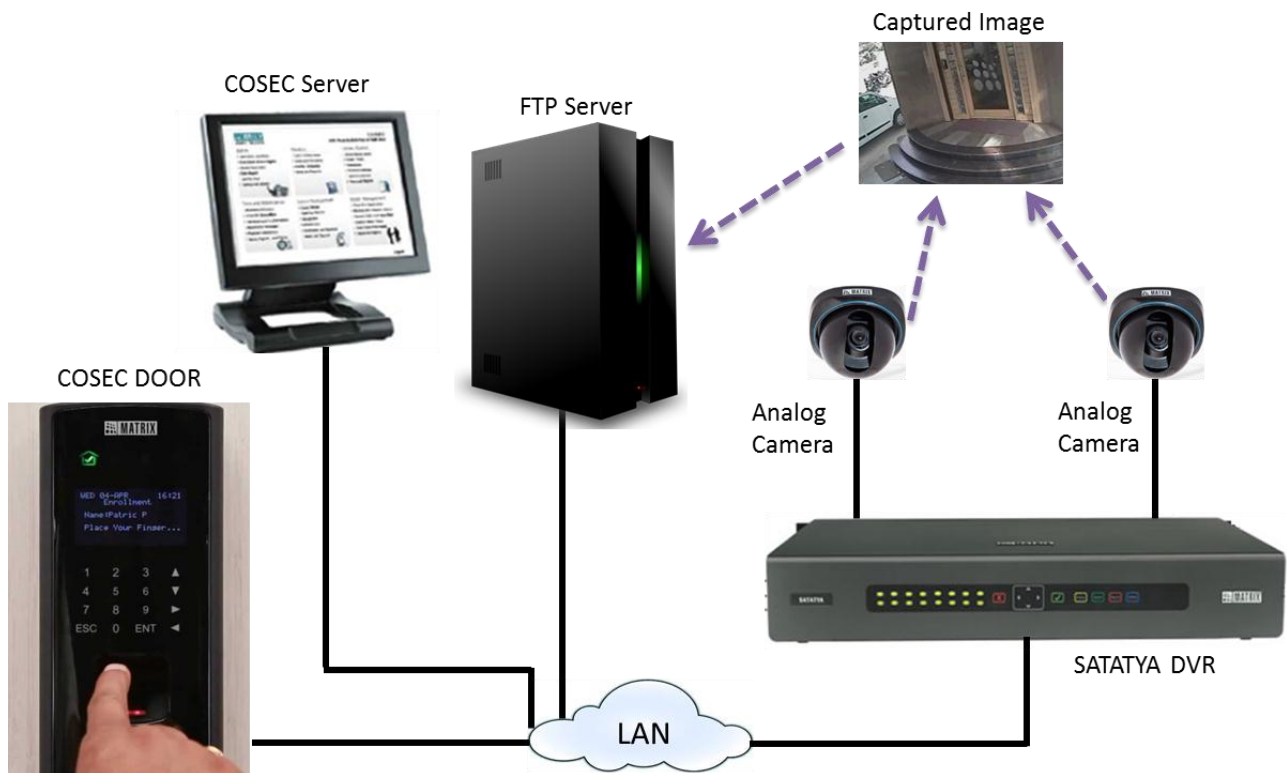


Matrix Technical Support Mailer – 43\_a  
**SATATYA DVR Integration with COSEC V6**

Dear Friends,

Matrix COSEC provides a comprehensive and complete solution for Time Attendance and Access Control. This mailer will help Matrix installer to integrate Matrix SATATYA DVR (Digital Video Recorder) with COSEC system.



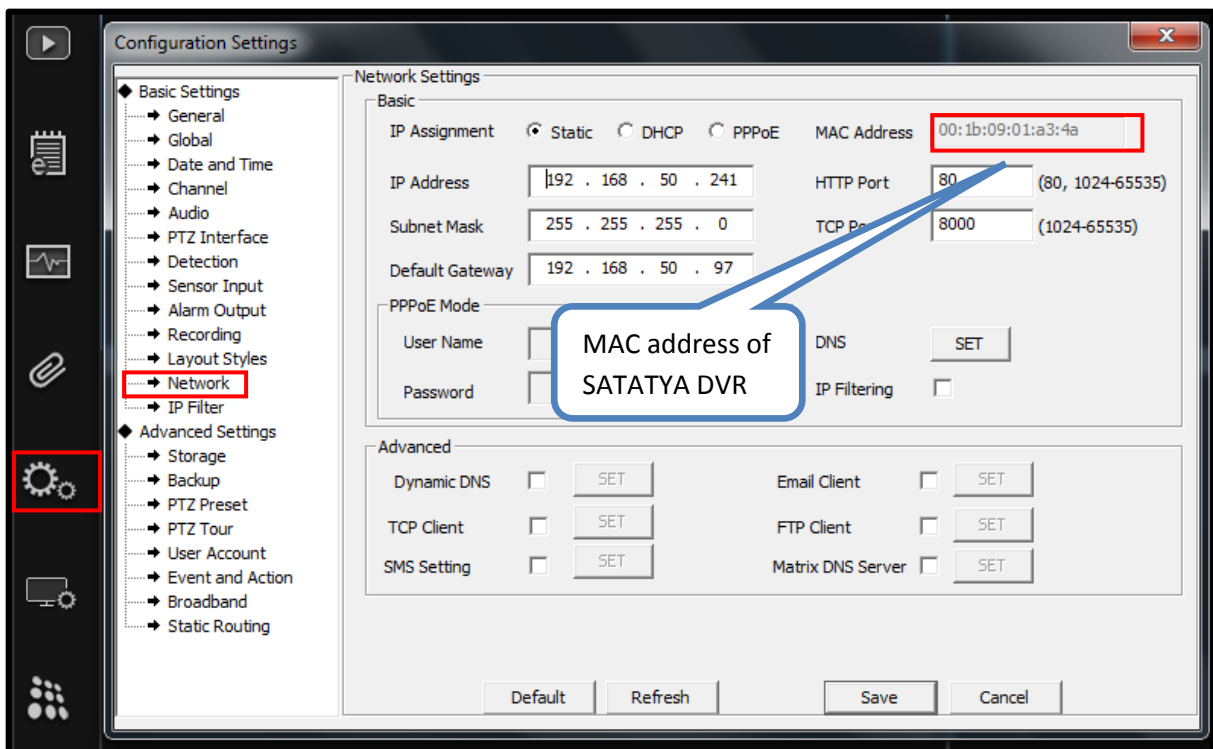
- The COSEC system provides interfaces with the Matrix SATATYA DVR and enables the users to grab images as well as video triggered by different events at the respective devices.
- Complete procedure of SATATYA DVR Integration with COSEC is explained further.

**Prerequisites for configuration:**

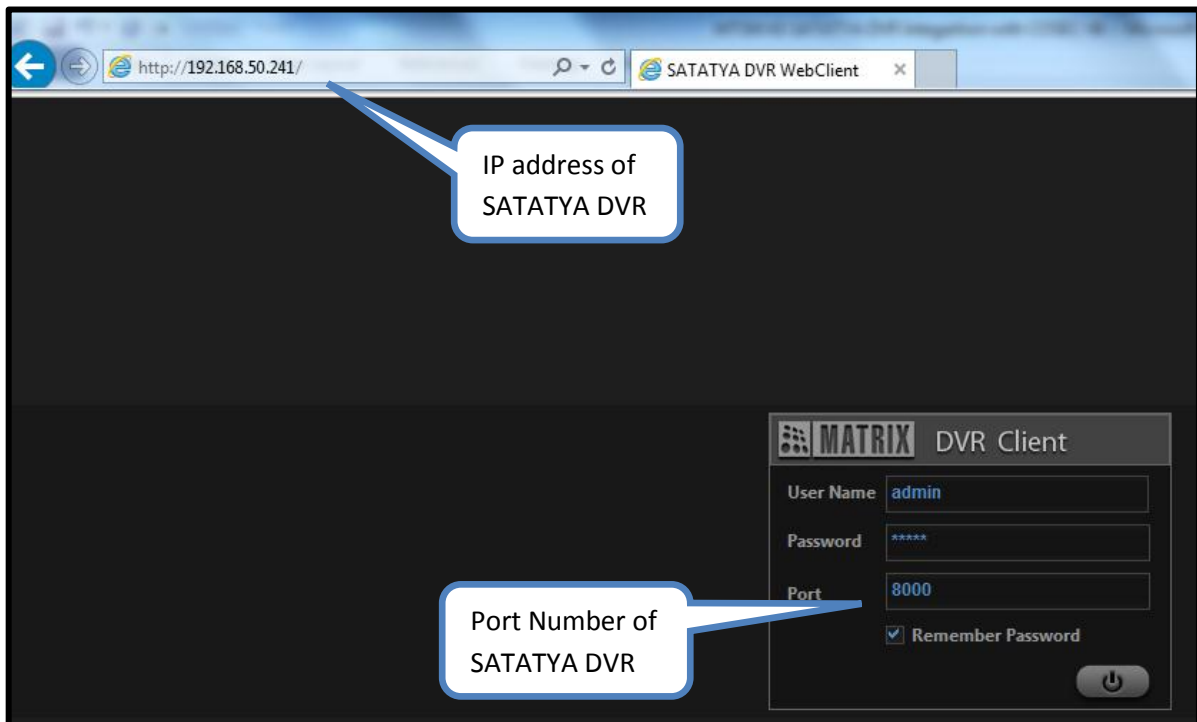
1. Make sure that COSEC DOOR, COSEC Server, FTP Server and SATATYA DVR are in the same subnet or if they are on the public network then make sure that they are accessible to each other.
2. Create FTP server in Local/public Network and it should be accessible by COSEC DOOR and SATATYA DVR.

<http://www.youtube.com/watch?v=nWpZkhXnhds>

3. Know the MAC address of SATATYA DVR.

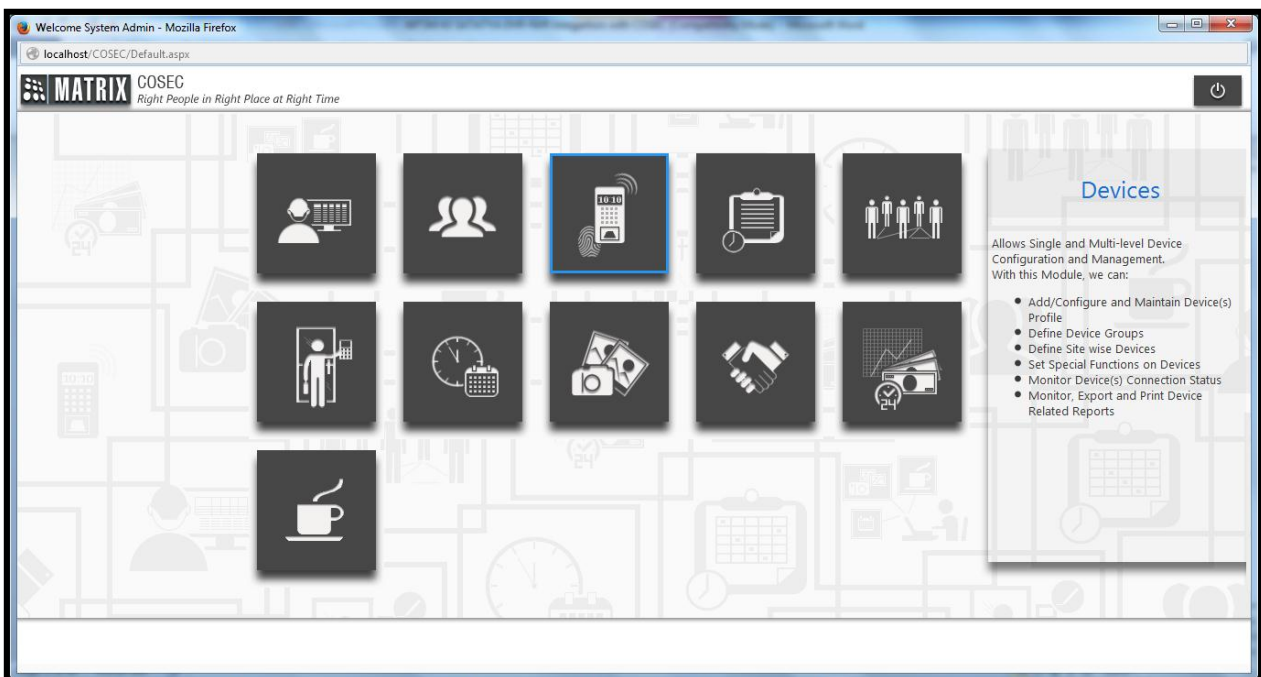


4. Know the IP address and TCP Port number of SATATYA DVR (Default IP address of SATATYA DVR is 192.168.1.123 and default TCP/Login port is 8000).

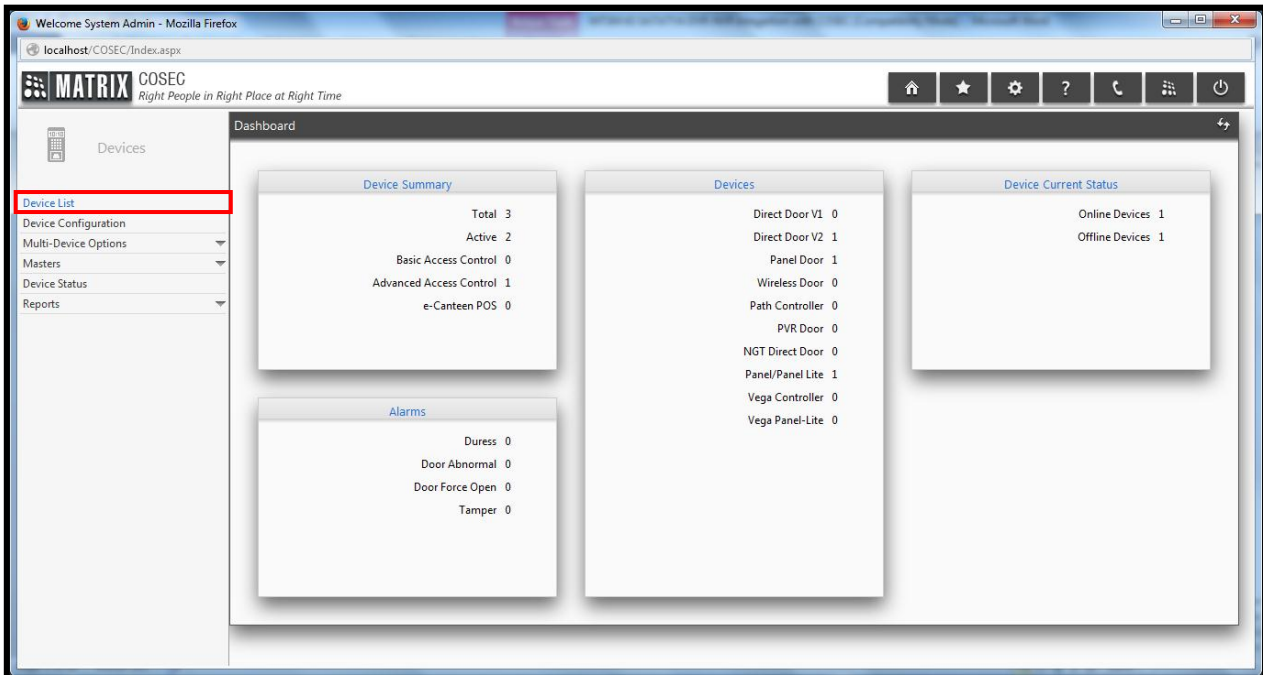


**To Configure SATATYA DVR parameters in COSEC, follow mentioned steps:**

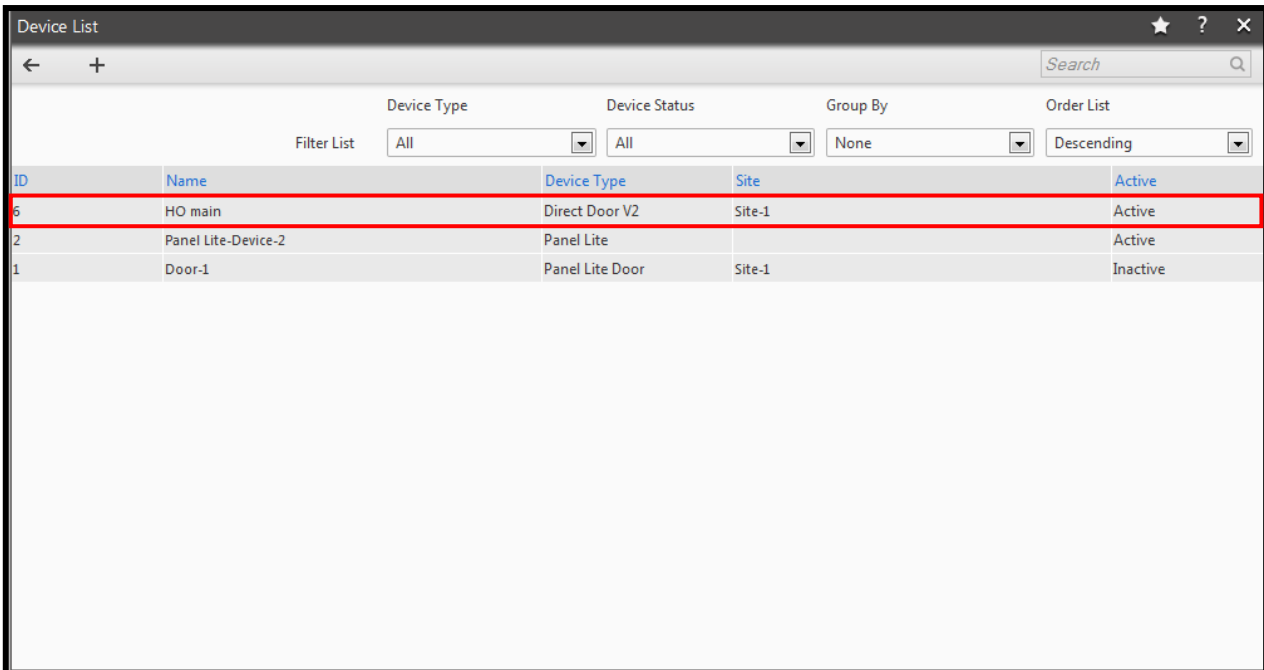
1. Go to **Devices** module.



2. Click on **Device List**.

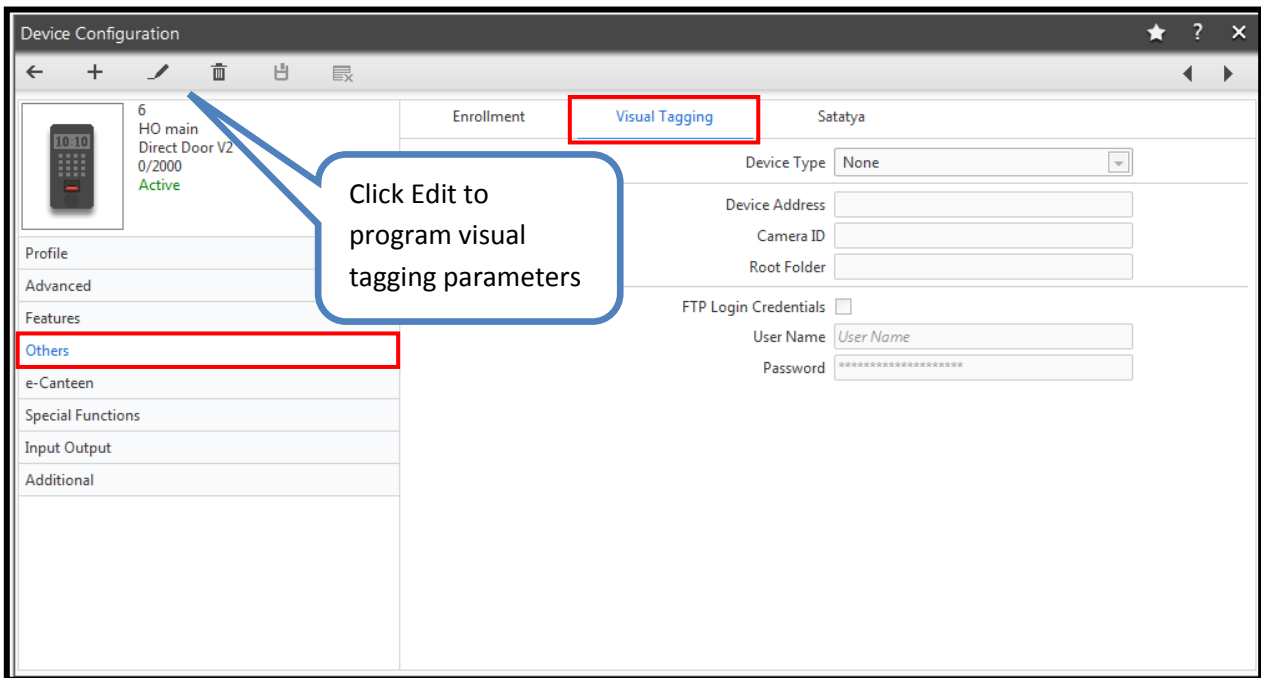


3. Click on the particular door to go to the door parameters.

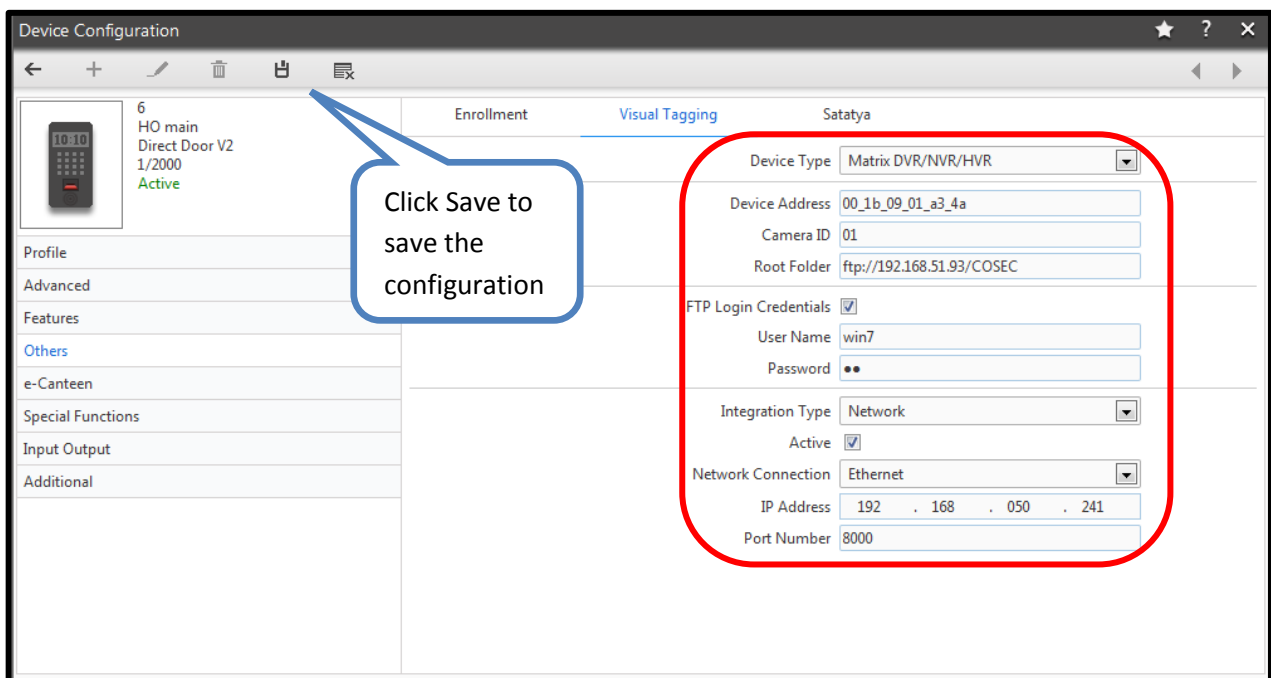


4. Go to **other parameters**.

- Here, user will get **Visual Tagging option** to configure integration settings.



- Program parameters as per below screenshot for integration of COSEC with SATATYA DVR and save the configuration parameters.



**Device Type:** Select **Matrix DVR/DVR/HVR** in the device type option.

**Device Address:** Specify the MAC address of the video recorder device (SATATYA DVR) using “\_” (underscore) as the separator.

**Camera ID:** Define camera ID as 01 to 16 (Channel number of camera connected to SATATYA DVR).

**Root Folder:** In Root Folder specify the ftp folder path to store or upload image captured by camera on predefined events (IP address or domain name address of FTP server where you want to upload captured images).

**FTP Login Credentials:** Specify **User Name** and **Password** credentials for FTP login if required.

**Integration Type:** Select Integration type as **Network**.

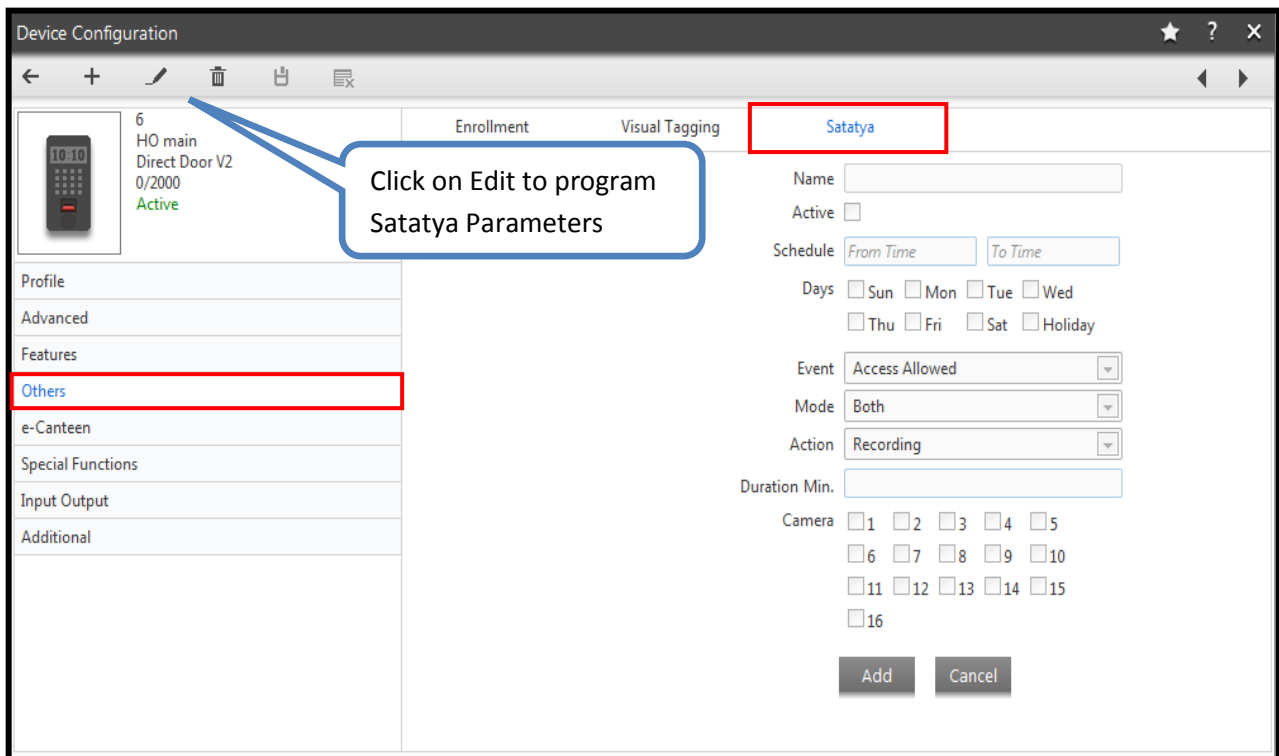
**Active:** Enable checkbox for Active.

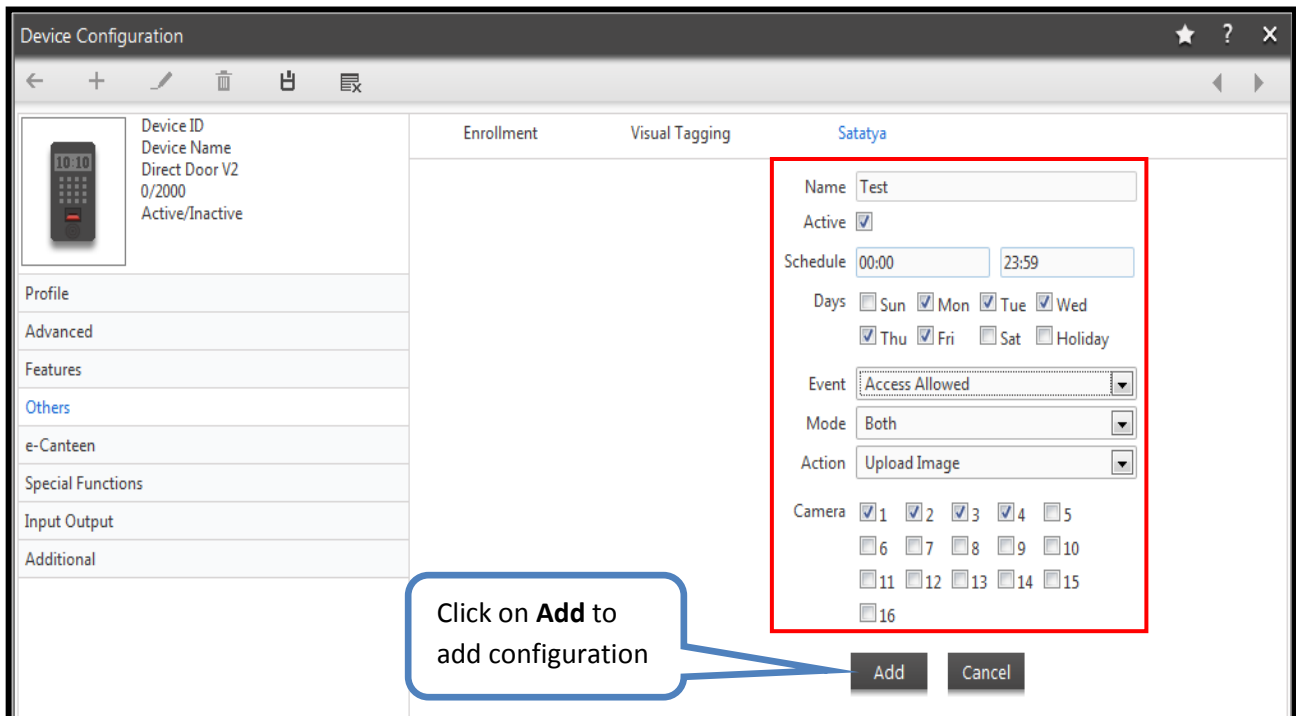
**Network Connection:** Select Network Connection as Ethernet.

**IP Address:** Define the IP Address of SATATYA DVR.

**Port:** Define the TCP port number of SATATYA DVR.

6. In **SATATYA** option user can configure different event & action. Program the required parameters.





Device Configuration

Device ID  
Device Name  
Direct Door V2  
0/2000  
Active/Inactive

Enrollment Visual Tagging **Satatya**

Name: Test  
Active:   
Schedule: 00:00 - 23:59  
Days:  Sun  Mon  Tue  Wed  
 Thu  Fri  Sat  Holiday  
Event: Access Allowed  
Mode: Both  
Action: Upload Image  
Camera:  1  2  3  4  5  
 6  7  8  9  10  
 11  12  13  14  15  
 16

Click on **Add** to add configuration

Add Cancel

**Name:** Specify the user friendly name as reference for integration.

**Active:** Enable checkbox for Active.

**Schedule:** Define the time schedule for the event with start time and end time (24 hour format) along with applicable days.

**Event:** Define the event from the drop down list. The options available are:

- ✓ Access Allowed
- ✓ Access Denied
- ✓ Invalid User
- ✓ Aux Input
- ✓ Duress Alarm
- ✓ Door Abnormal Alarm
- ✓ Door Force Open Alarm
- ✓ Tamper Alarm

**Mode:** Select the event mode from the drop down list. The options available are:

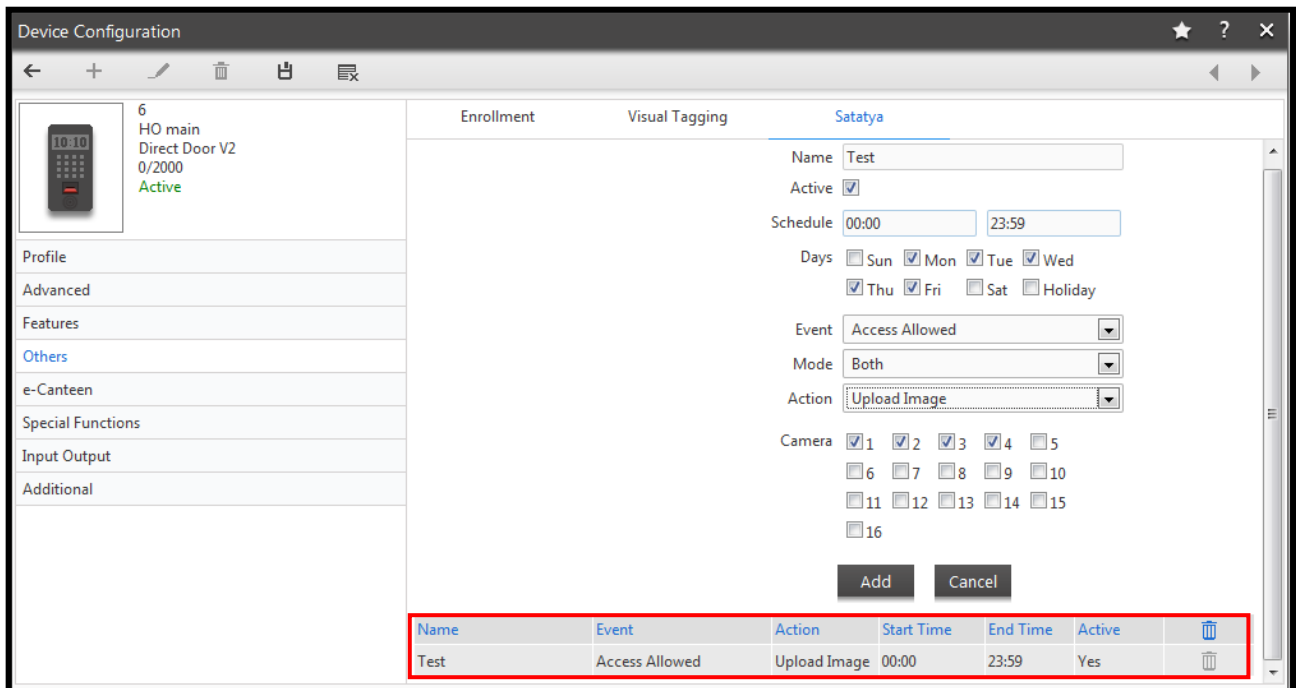
- ✓ Entry
- ✓ Exit
- ✓ Both

**Action:** Select the action from the drop down list. The options available are:

- ✓ **Recording:** Specify the duration in minutes.
- ✓ **Upload Image:** This will upload the Image as per the FTP settings.
- ✓ **Video Pop – up:** Specify the video Pop – up.
- ✓ **PTZ Preset:** Specify the PTZ position number as defined on the SATATYA DVR.
- ✓ **Mail Image:** Image will be sent to Specified mail ID.

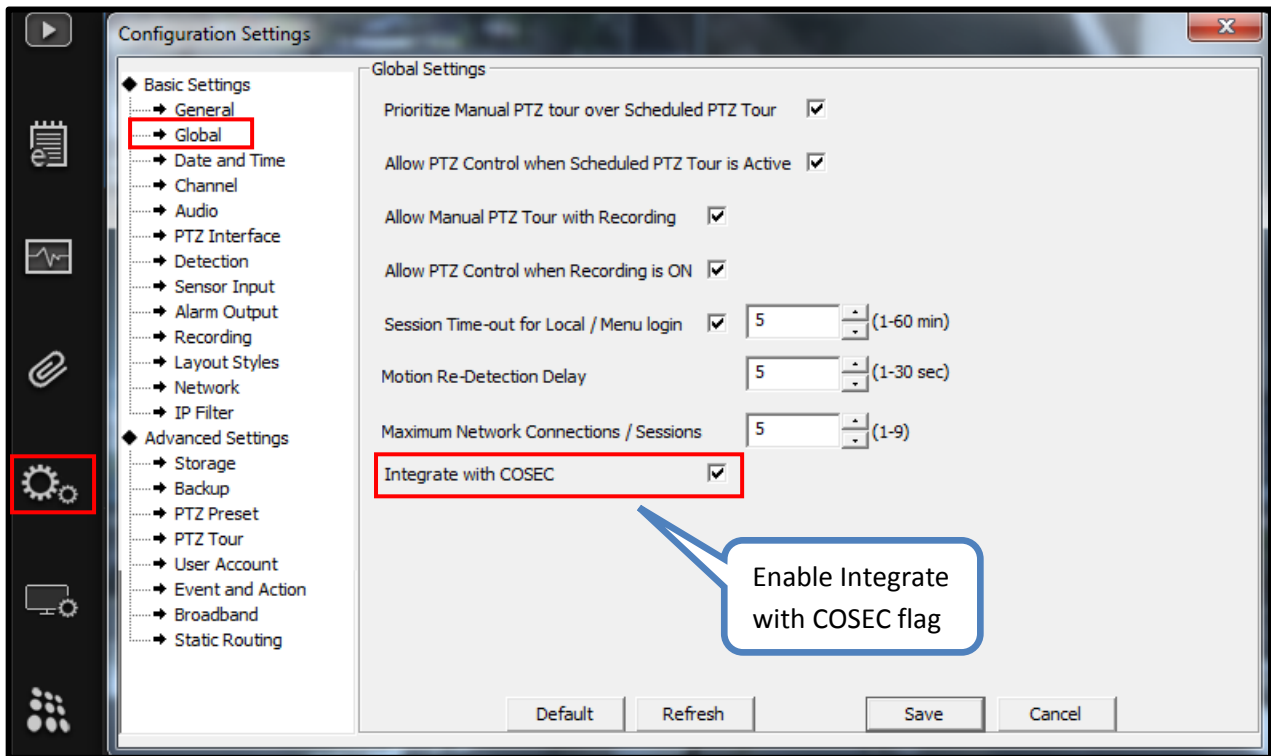
**Camera:** Specify the relevant camera details depending on the action selected.

- Clicking on **Add** will add the event to the list as shown in the below image.

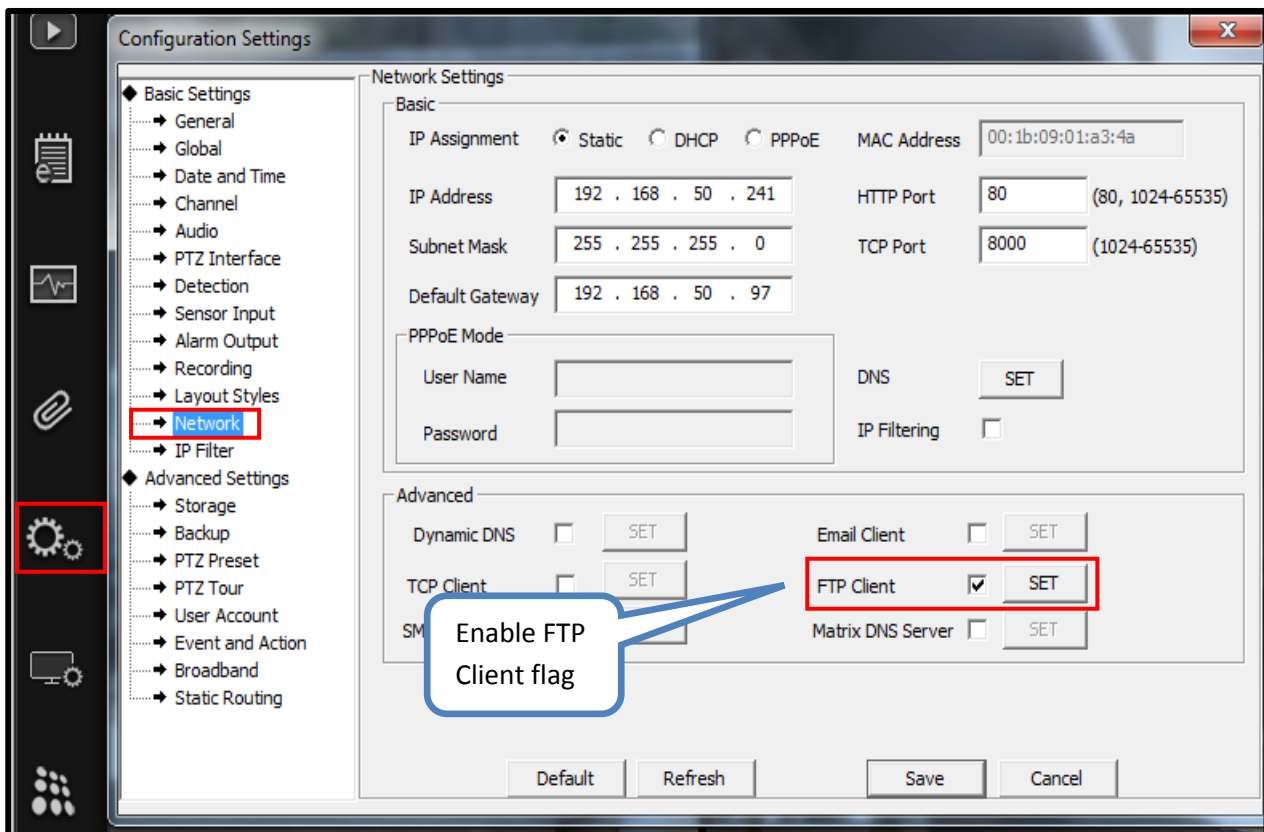


**To Configure COSEC parameters in SATATYA DVR, follow mentioned steps:**

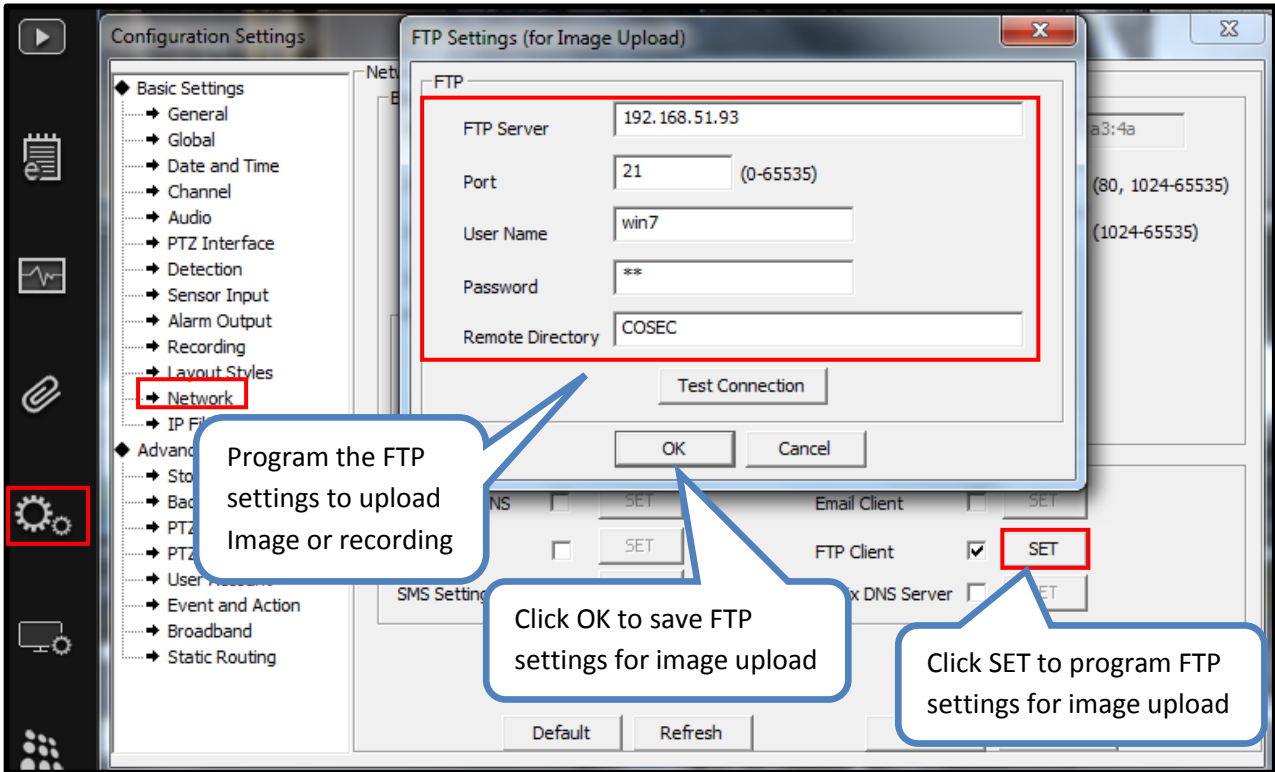
1. Check **Integrate with COSEC** checkbox under **Device Configuration → Basic Settings → Global**.



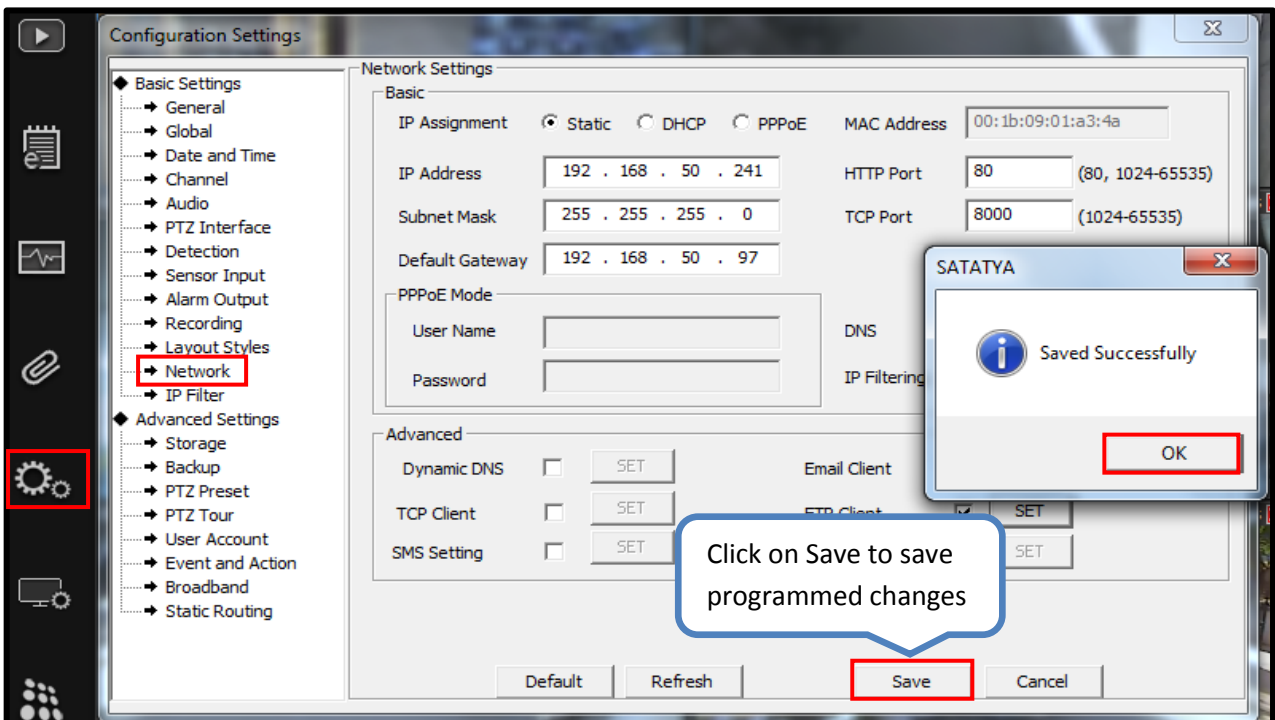
2. Enable **FTP Client** flag under **Device Configuration** → **Basic Settings** → **Network**.



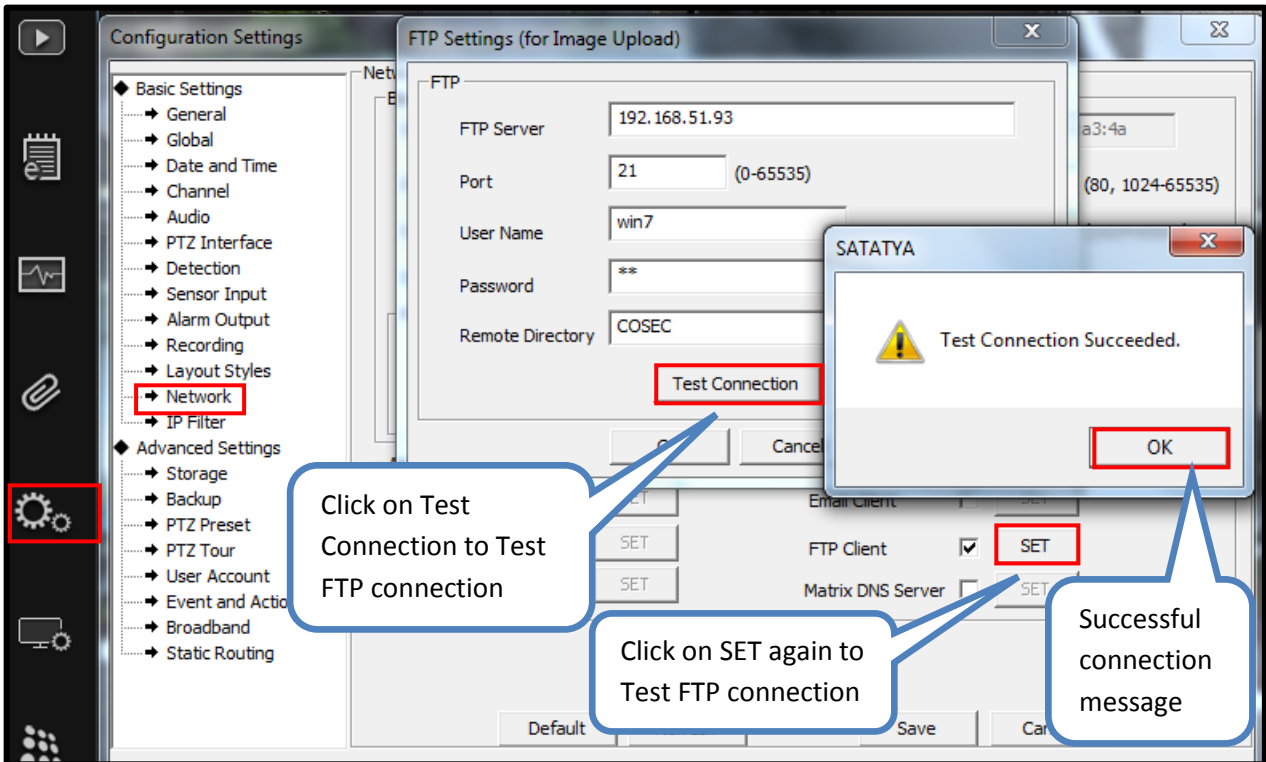
3. To program the FTP client details click on SET button besides FTP client field under **Device Configuration** → **Basic Settings** → **Network** and program required details.



4. Click on **Save** to save configuration changes.

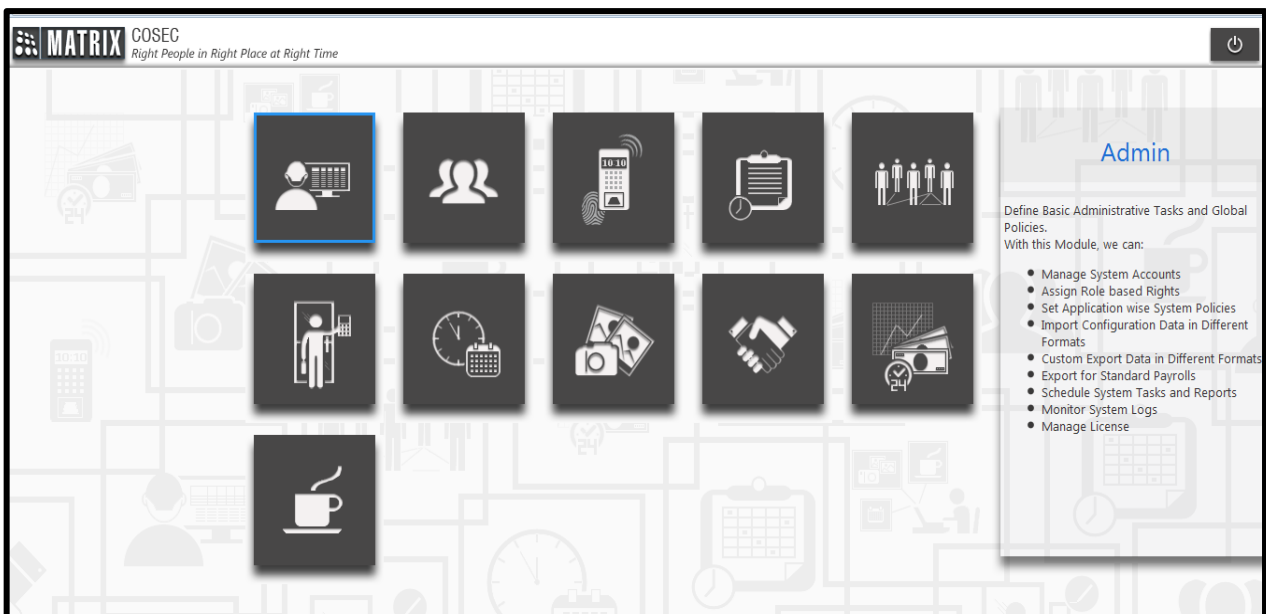


5. Test the programmed FTP connection with the **Test Connection** option.

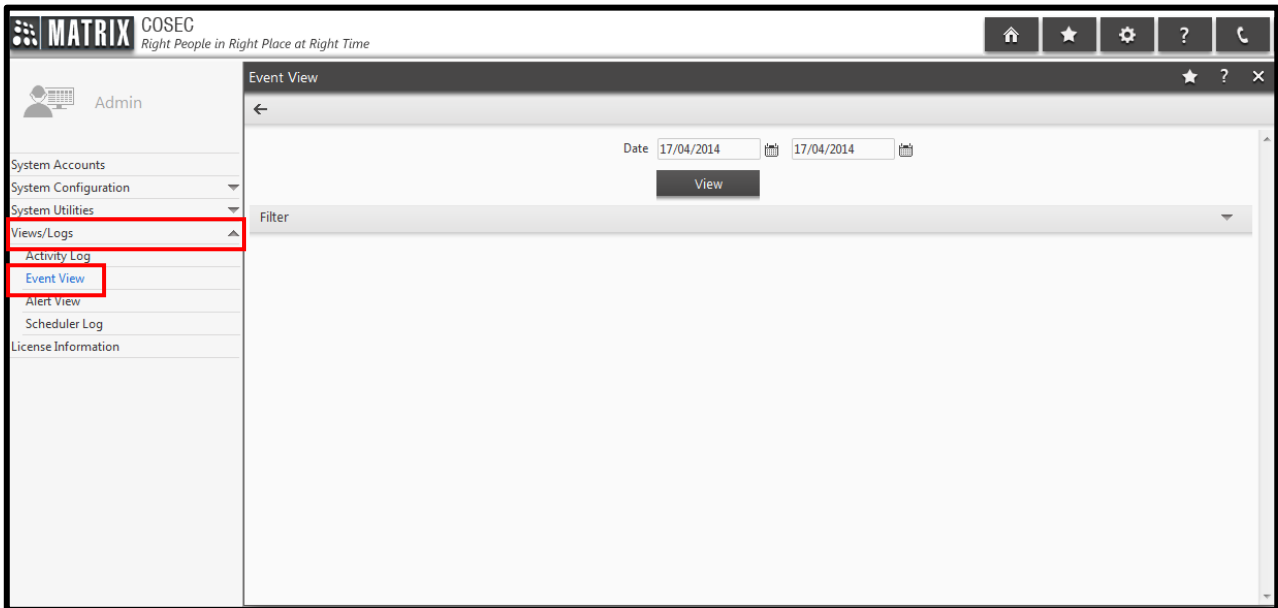


**Event View in COSEC:**

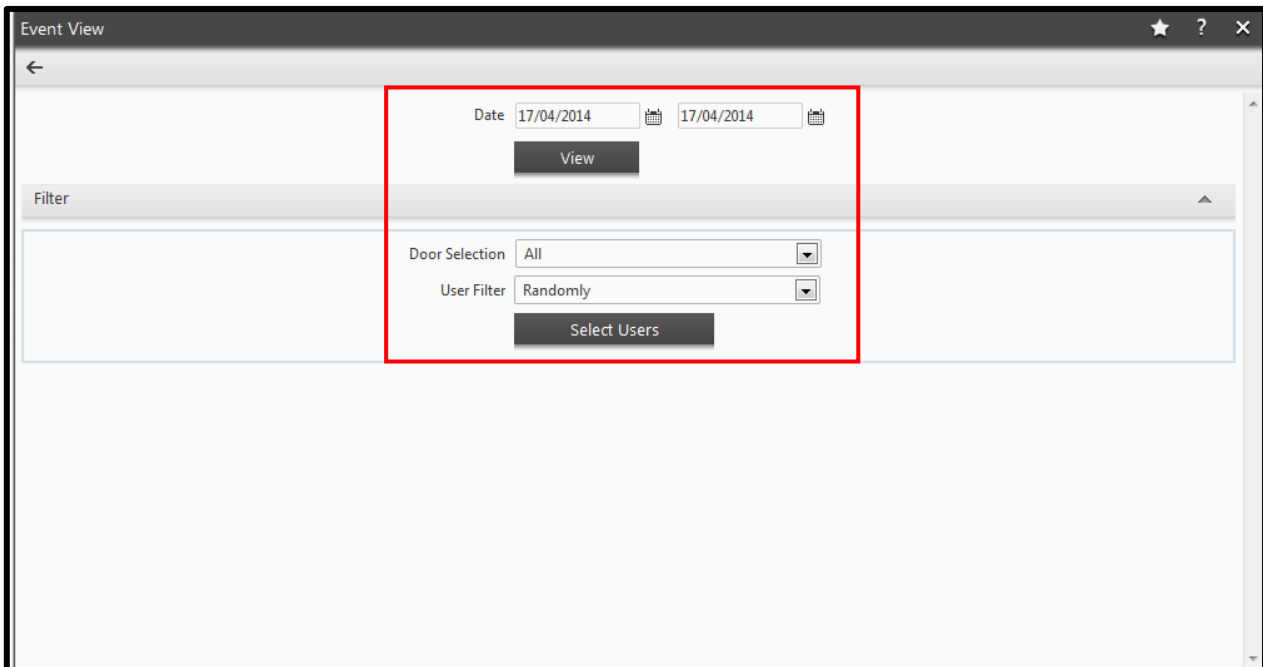
1. User events and related images/videos can be seen from the Event View option in the Admin module.



2. To access this functionality, go to **Admin → Views/Logs → Event View**.



3. Set the filter parameters for **Door** and **User** and define the **Start date** and **End date** to view the list of events.



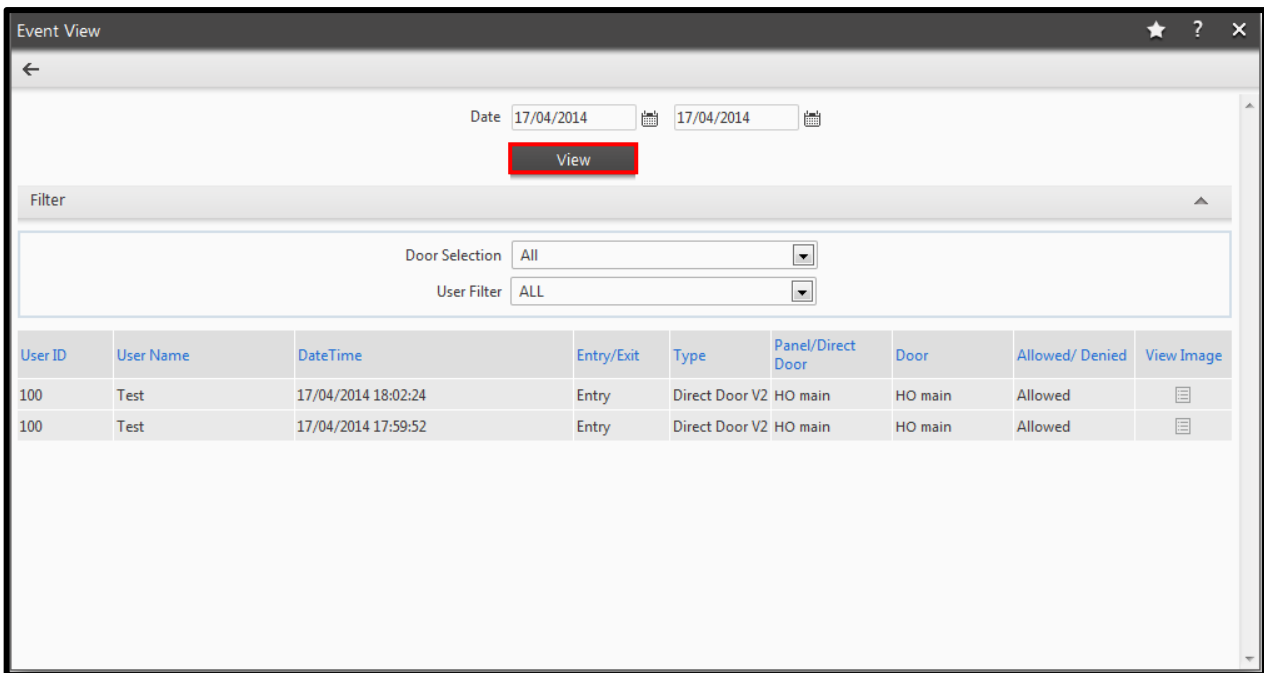
**Door Selection:**

- **All:** View events from all doors
- **Selected:** View events from the selected doors only

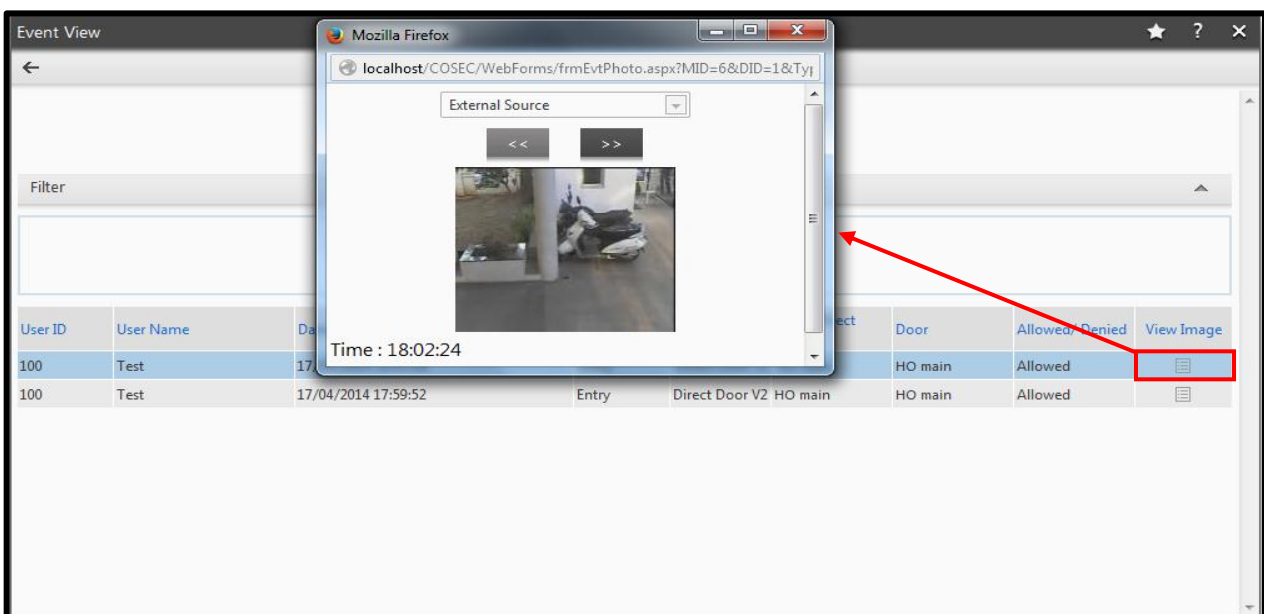
**User Filter:**

- **All:** View events from all users
- **Select Group:** View events from the
- **Randomly:** Randomly Selected Users

4. Click on **View** button to view the list of events.



5. From the list click on view Image button for particular user event to see uploaded image.





In this way user can integrate Matrix SATATYA DVR with COSEC Doors.

Technical Training Team

[Training@MatrixComSec.com](mailto:Training@MatrixComSec.com)

Disclaimer: The information contained in this e-mail and/or attachment may contain confidential or privileged information. Unauthorized use, disclosure or copying is strictly prohibited and may constitute unlawful act and can possibly attract legal action, civil and/or criminal. The contents of this message need not necessarily reflect or endorse the views of Matrix Comsec Pvt Ltd on any subject matter. Any action taken or omitted on this message is not entirely at your risk and the originator of this message nor does Matrix Comsec Pvt Ltd take any responsibility or liability towards the same. If you are not the intended recipient, please notify us immediately and permanently delete the message.