

Matrix Technical Support Mailer – 41 Port & IP settings for accessing Security Dongle

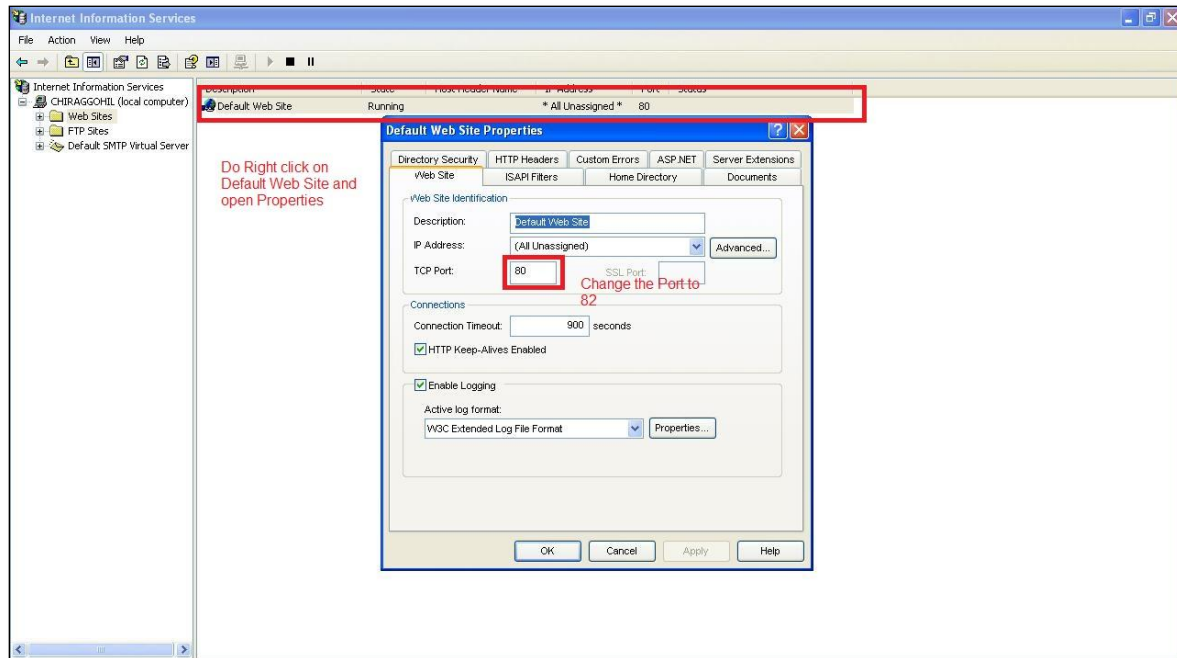
Dear Friends,

This technical mailer will guide the users to configure or change the default IIS port. Also the users can get the information regarding connecting the database if the COSEC applications are installed in different PCs with common database in the central PC.

Changing IIS port:

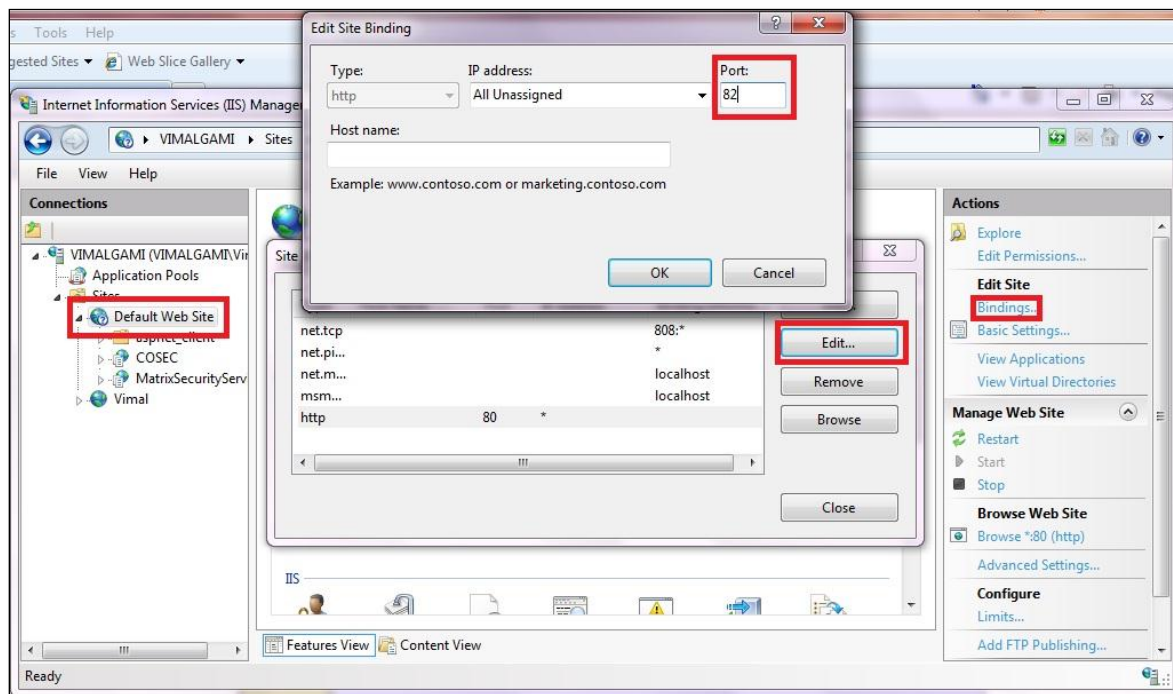
In run window, by typing “inetmgr”, following window will appear.
(On changing the port of default website, all the applications which are hosted under default website can be accessed by the newly defined port.
For e.g. COSEC Web and Security Services)

For Windows XP:



Go to Internet Information Services → PC (Local Computer) → Right Click on Default Web Site and then click on Properties. Change the TCP port to any of the free ports ranging from 1025 to 65535.

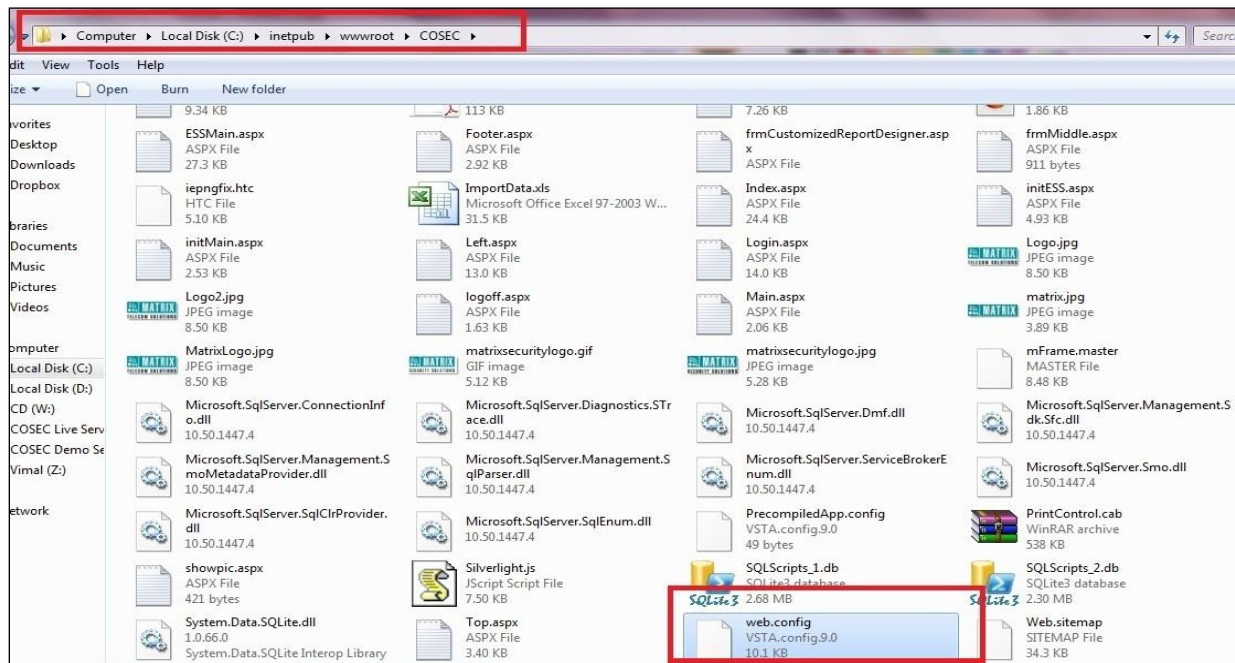
For Windows 7:



Go to PC (Local Computer) → Default Web Site → Bindings → Edit → Port. Here again user can assign any of the free ports ranging from 1 to 65535.

CASE 1: For the COSEC Applications (like COSEC Monitor, COSEC Enroll and COSEC VMS) installed in the same PC (with other than the default IIS port).

Now both COSEC Web and Security Service are moved to newly defined port. But still COSEC Web will try to find Security Service on port 80 as it is defined implicitly in the COSEC Web. So we explicitly need to change it to the same new port as explained below by modifying **web.config** file. One may find this file at the following path:
Computer → System Drive → inetpub → wwwroot → COSEC



Web.config file Modifications:

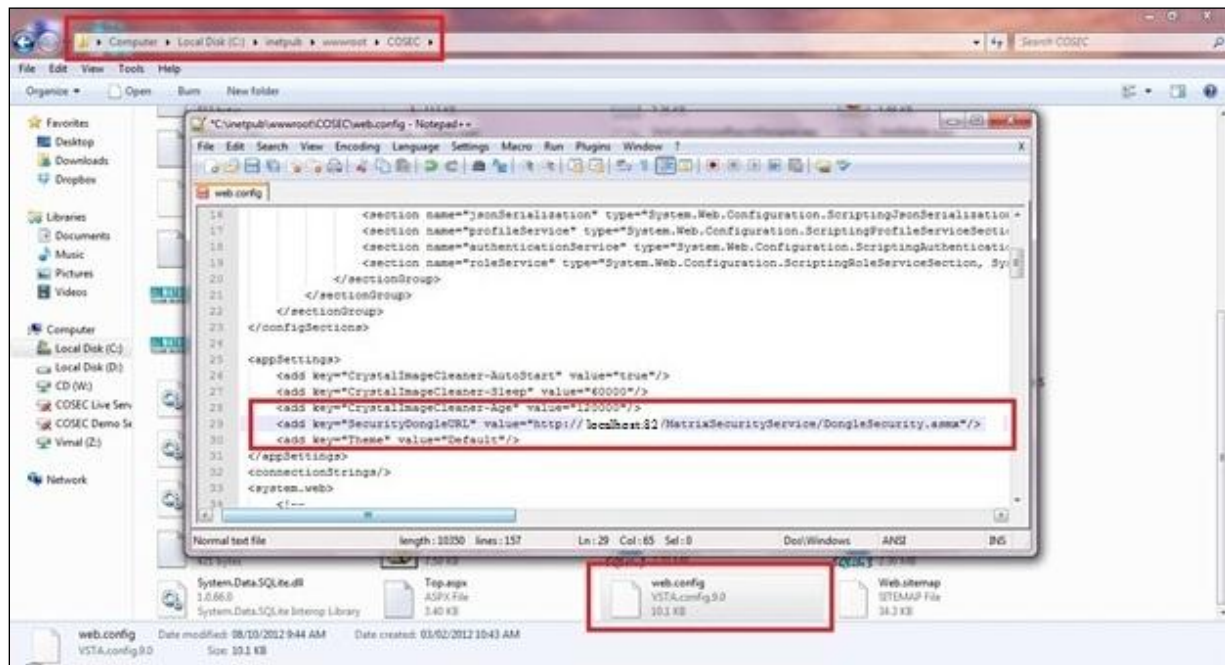
Now add the following key in the below application settings section in the web.config file shown highlighted in the below image.

Instead of:

```
<addkey="SecurityDongleURL"  
value="http://localhost/MatrixSecurityService/DongleSecurity.aspx"/>
```

Replace with:

```
<addkey="SecurityDongleURL"  
value="http://localhost:82/MatrixSecurityService/DongleSecurity.aspx"  
>
```



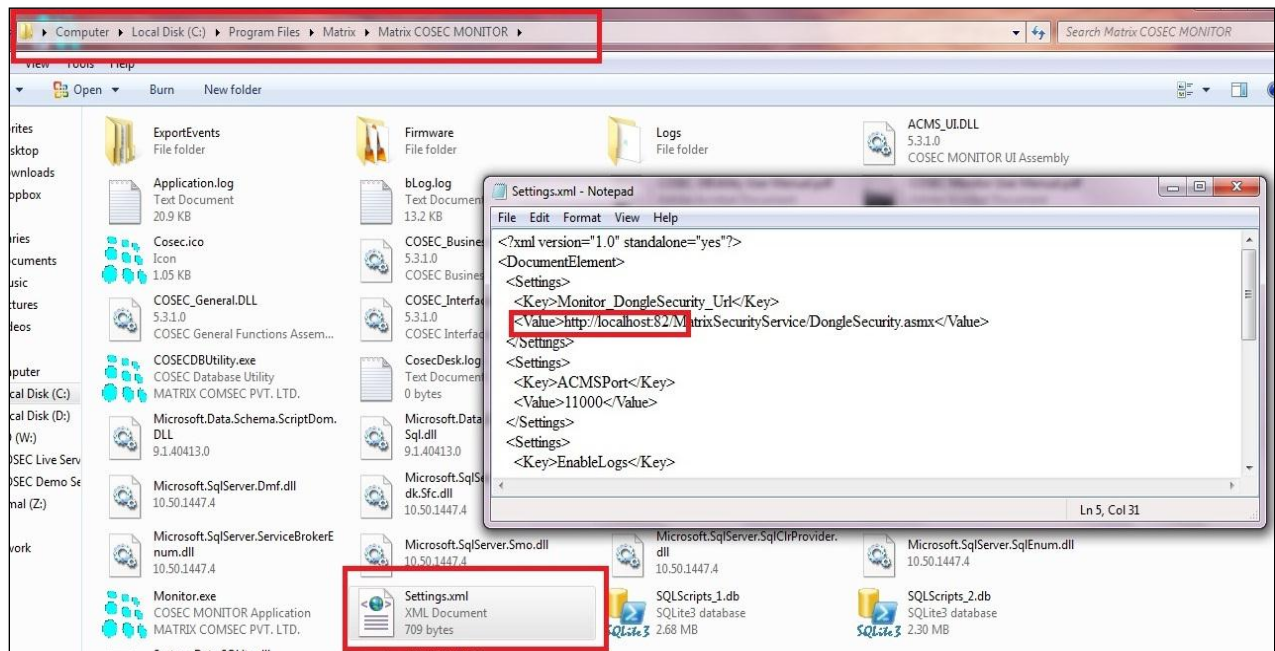
The applications which cannot be opened without Security dongle are:

- 1.) COSEC Monitor,
- 2.) COSEC Enroll,
- 3.) COSEC VMS.

So the Settings for the above applications also need to be changed which is explained below:

One needs to edit the **Settings.xml** file which is available at path:

Computer → System Drive → Program Files → Matrix → Matrix COSEC Monitor/ Enroll/VMS.



Open the **Settings.xml** file with notepad editor and make the following changes marked in red:

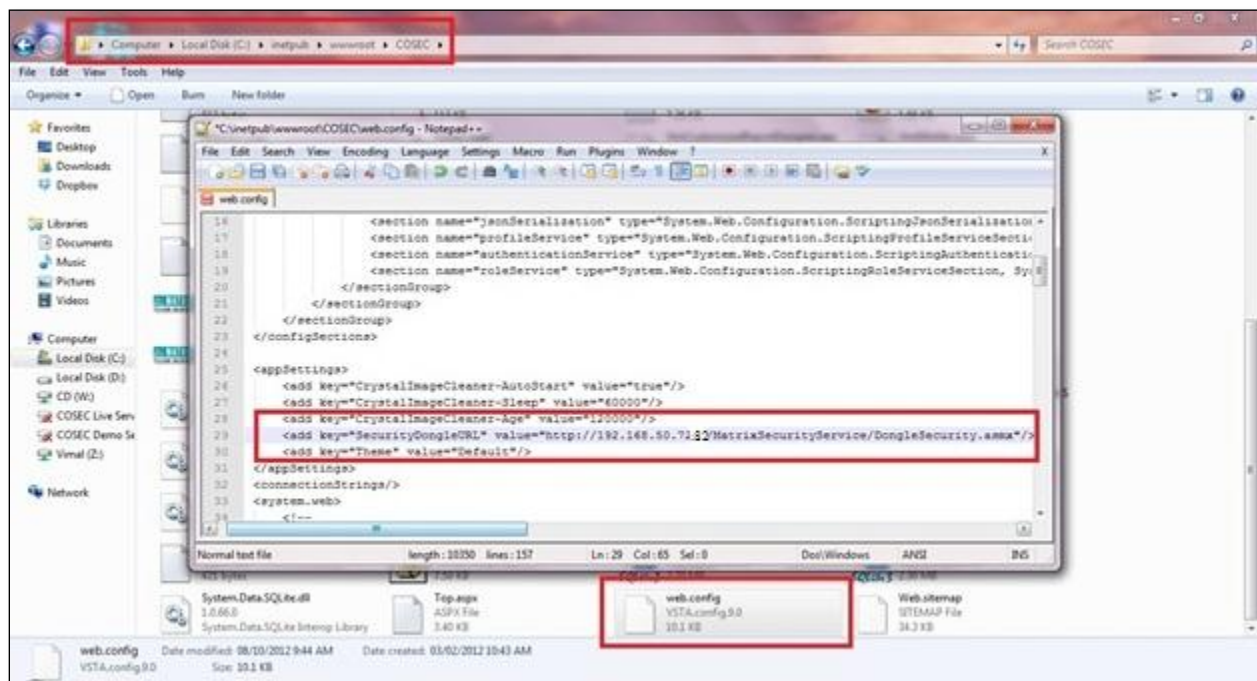
Instead of:

```
<Value>http://localhost/MatrixSecurityService/DongleSecurity.asmx</Value>
```

Replace with:

```
<Value>http://localhost:82/MatrixSecurityService/DongleSecurity.asmx</Value>
```

CASE 2: For the COSEC Applications (like COSEC Monitor, COSEC Enroll and COSEC VMS) installed in the different PCs with different Port. Open the Web.config file and perform the following changes:



Instead of:

```
<addkey="SecurityDongleURL"
value="http://localhost/MatrixSecurityService/DongleSecurity.asmx"/>
```

**Mention IP address of the PC where the Security dongle is plugged.
(And port if changed)**

```
<addkey="SecurityDongleURL"
value="http://192.168.50.xx:82/MatrixSecurityService/DongleSecurity.a
smx"/>
```

And similarly the settings for the applications are to be changed in the **Settings.xml** file (available at the path Computer → System Drive → Program Files → Matrix → Matrix COSEC Monitor/ Enroll/VMS.)

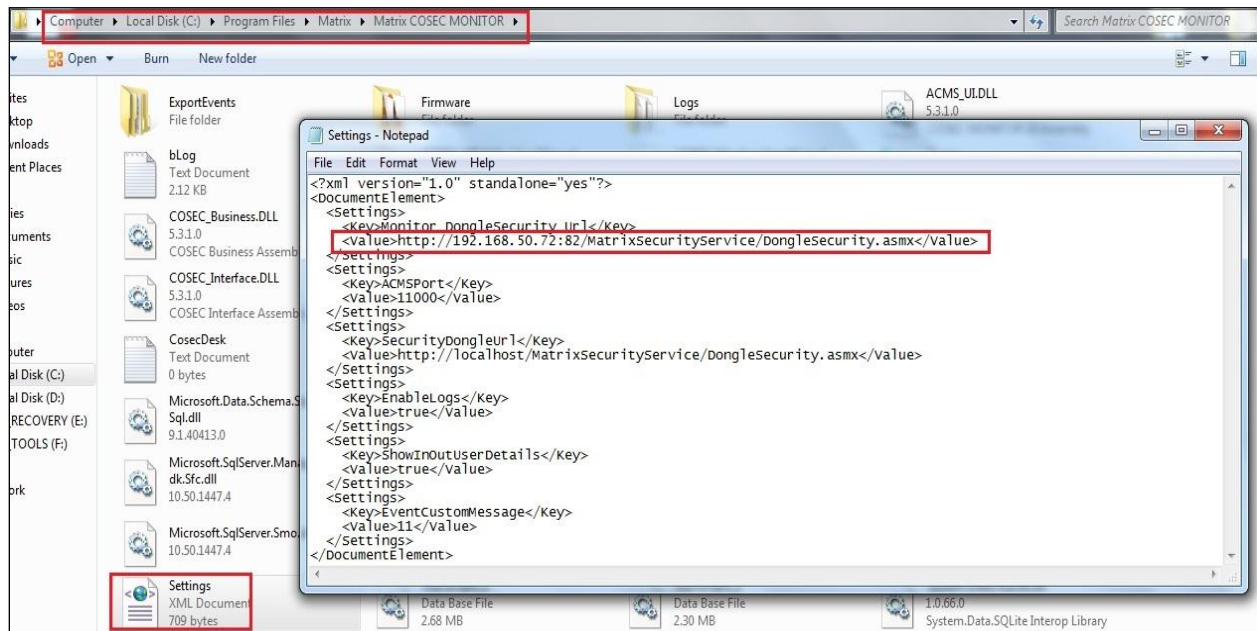
Mention the IP address of the PC where COSEC Security dongle is plugged and the IIS port (if changed)

Instead of:

```
<Value>http://localhost/MatrixSecurityService/DongleSecurity.asmx</Value>
```

Replace with:

```
<Value>http://192.168.50.xx:82/MatrixSecurityService/DongleSecurity.asmx</Value>
```



Technical Support Team – Security Product
Matrix ComSec, Vadodara, India
E-mail: support@MatrixComsec.com

Disclaimer: The information contained in this e-mail and/or attachments to it may contain confidential or privileged information. Unauthorized use, disclosure or copying is strictly prohibited and may constitute unlawful act and can possibly attract legal action, civil and/or criminal. The contents of this message need not necessarily reflect or endorse the views of Matrix Telecom Pvt. Ltd on any subject matter. Any action taken or omitted to be taken based on this message is entirely at your risk. Neither the originator of this message nor Matrix Telecom Pvt. Ltd takes any responsibility or liability towards the same. If you are not the intended recipient, please notify us immediately and permanently delete the message.