

## Matrix Technical Support Mailer – 40 Cafeteria Management

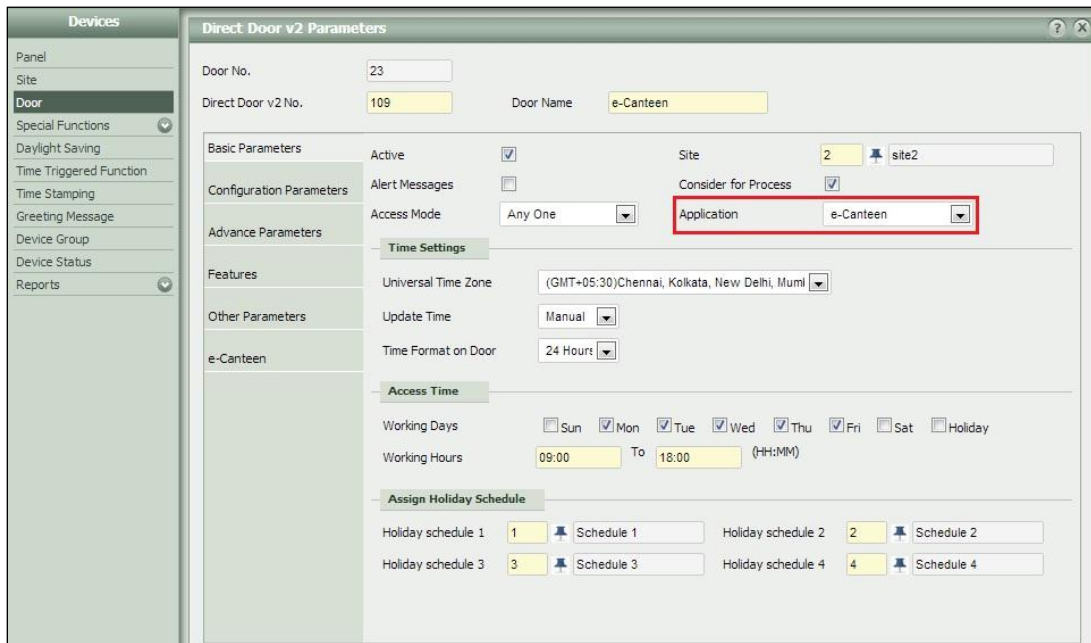
The COSEC e-Canteen is a Web based cafeteria management tool offering unparalleled ease of use in managing cafeteria operations for a large number of users or employees.

The following are the highlights of the e-Canteen module:

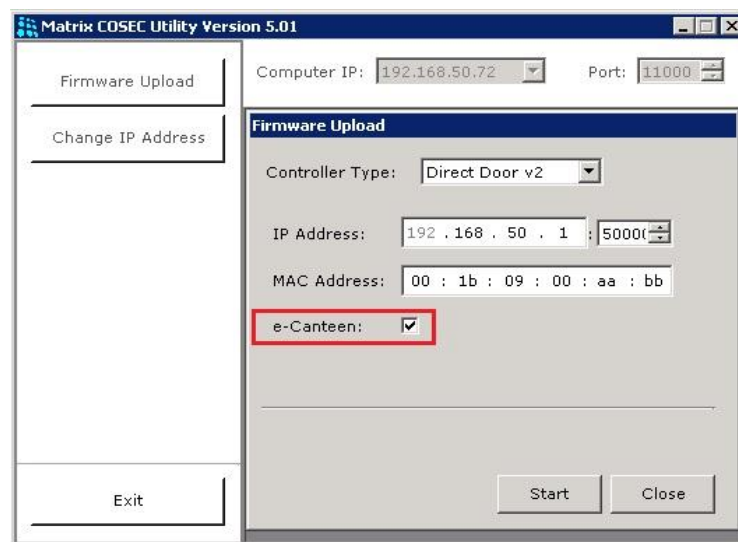
- Reduced waiting time at the cafeteria thus improving employee productivity
- Meal payment cycle completion within seconds
- Easily track the usage of subsidized meal / snack programs. Track cafeteria usage by outsiders / visitors
- Trouble free cash management



Device needs to be defined in *e-Canteen* application.



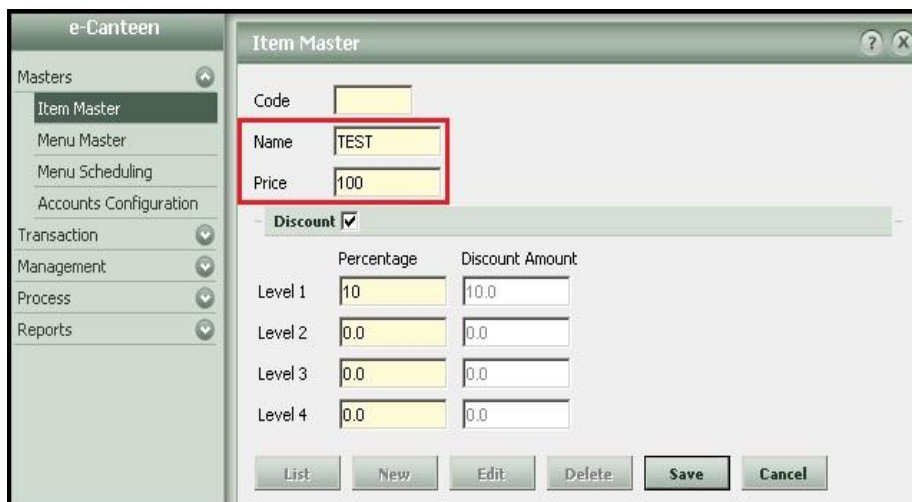
COSEC Utility: Before proceeding for the e-Canteen device, e-Canteen Firmware needs to be upgraded. It can be either done through COSEC Utility or through COSEC Monitor. (By right clicking on the selected device and sending the command for upgrading the firmware.)



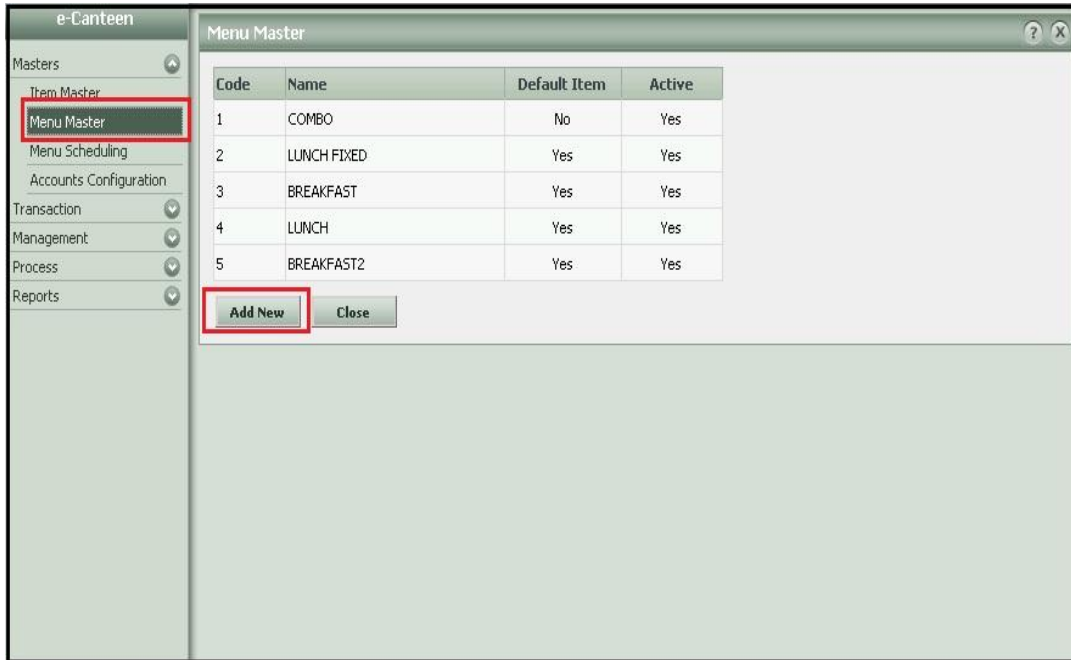
The e-Canteen module enables the user to define the master list of items that will be served by the in-house cafeteria during the various menu schedules. These items can then be assigned to various menus from the Menu master option. To start defining the menu items, go to **e-Canteen** → **Masters** → **Item Master** in the left pane. The following page appears.



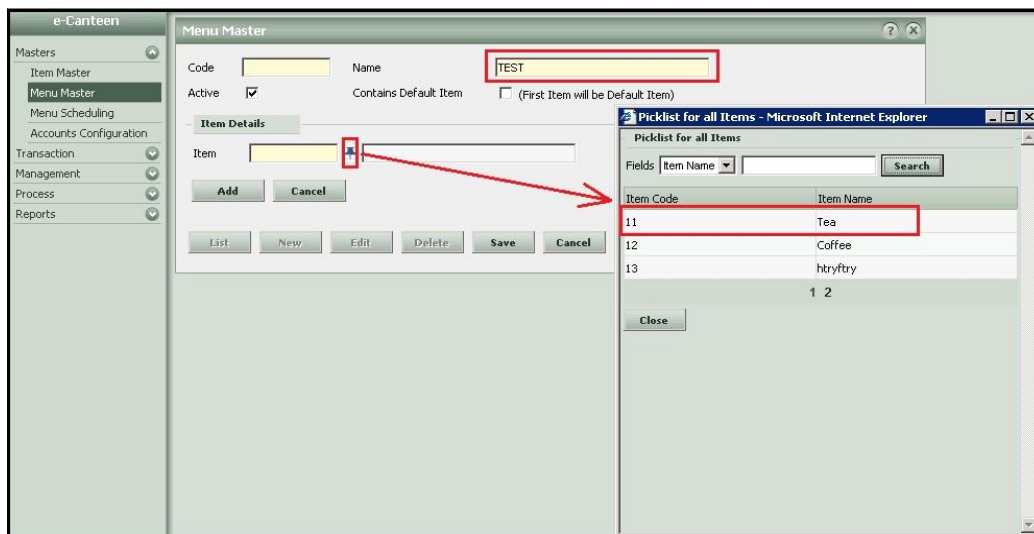
The list of items which are already defined by the user will be displayed in the right pane as shown. Click on the **Add New** button to start defining a new menu item. The following page appears.



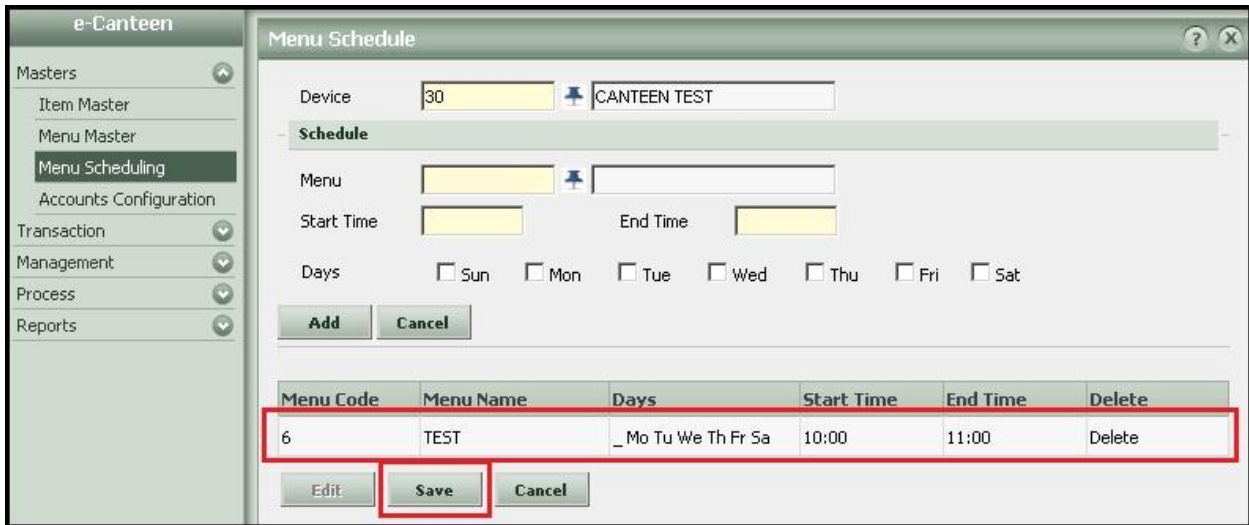
The e-Canteen module enables the user to define menus which may consist of some or all the items defined from the Item Master option. These menus can then be assigned to the various e-Canteen devices as per a configured time schedule from the **Menu Scheduling** option.



The list of menus which are already defined by the user will be displayed in the right pane as shown. Click on the **Add New** button to start defining a new menu item.

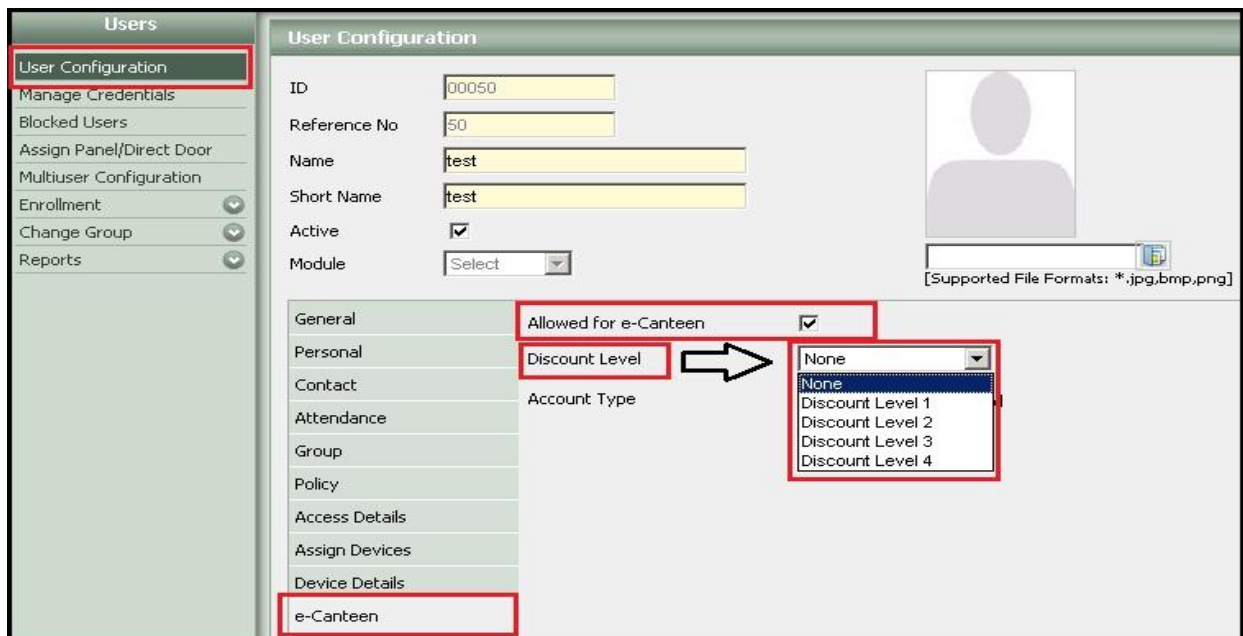






After saving the configurations, device will be rebooted, menu configurations will be uploaded in the device. And according to the schedule the Menu will displayed.

The Last step is to allow users for the e-Canteen device. Users can be configured either as Pre-paid Users or Post-paid Users. Discount Level can also be assigned to the users (not mandatory).





## **Thanks & Regards,**

Technical Support Team – Security Product  
Matrix ComSec, Vadodara, India  
E-mail: [support@MatrixComsec.com](mailto:support@MatrixComsec.com)

***Disclaimer:*** The information contained in this e-mail and/or attachments to it may contain confidential or privileged information. Unauthorized use, disclosure or copying is strictly prohibited and may constitute unlawful act and can possibly attract legal action, civil and/or criminal. The contents of this message need not necessarily reflect or endorse the views of Matrix Telecom Pvt. Ltd on any subject matter. Any action taken or omitted to be taken based on this message is entirely at your risk. Neither the originator of this message nor Matrix Telecom Pvt. Ltd takes any responsibility or liability towards the same. If you are not the intended recipient, please notify us immediately and permanently delete the message.