

## **Matrix Technical Support Mailer-20**

### **COSEC Database Backup & Restore**

Dear Friends,

This document will help you to understand the method of taking the backup of COSEC database and to restore the old COSEC log and data files to the newly created database i.e. restore functionality.

#### ***Why do we need to take the COSEC Database Backup?***

The primary purpose is to recover the data once it is lost, be it by data deletion / corruption/ system format etc. which is indeed, a common incidence.

It's a good practice to take the backup in the hard drive, other than the drive, in which, the OS (Operating System) is installed. For example, if the OS is installed in C:\ drive then it is better to take the backup in D:\ or E:\ drive.

Because, if the OS, somehow crashes, then it needs to be reinstalled and sometimes, it is compulsory to format the C:\ drive, so that, if the backup is not stored in any other drive, the data is lost.

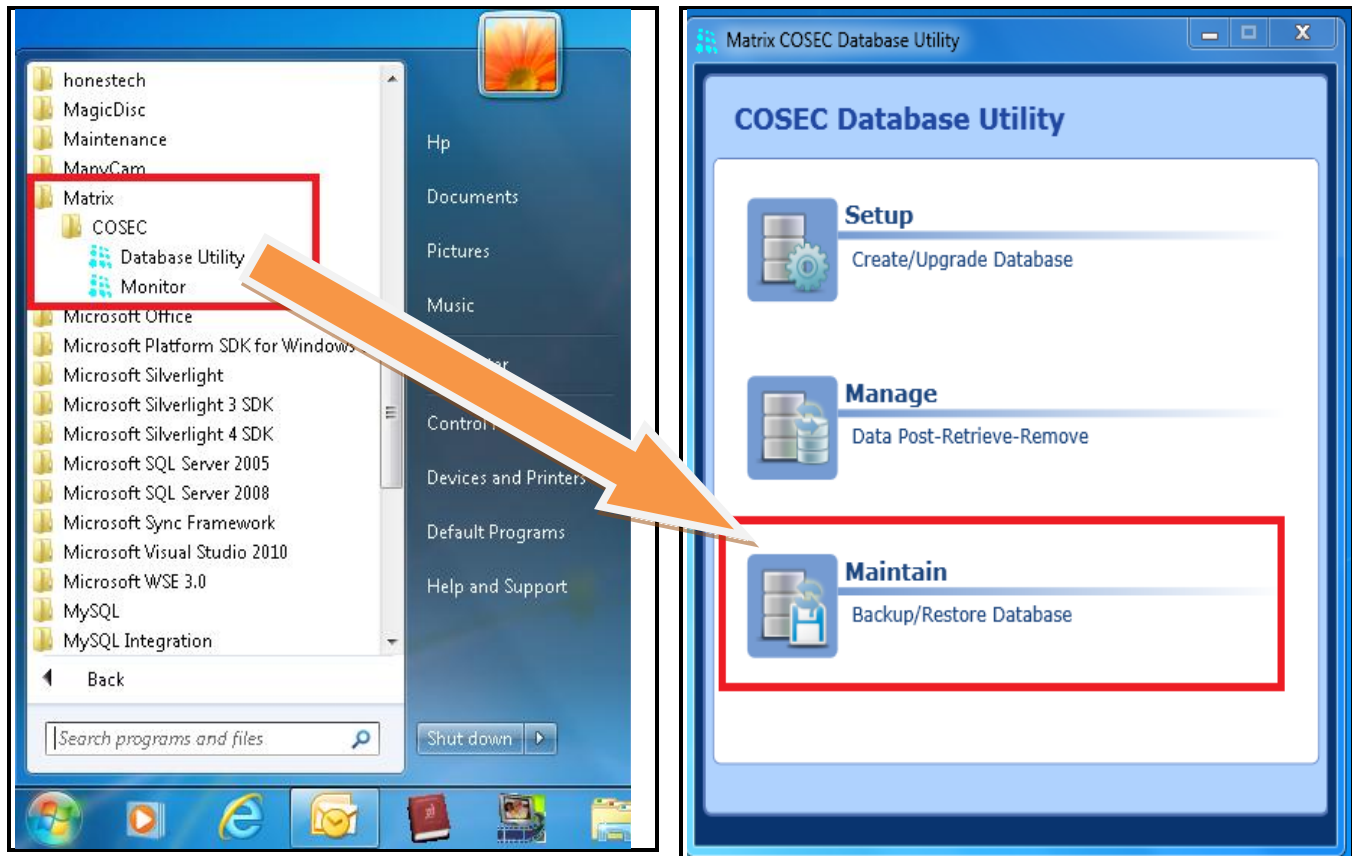
#### ***Let's see how to take the Database backup?***

There are two ways to take the COSEC database backup:

- 1) COSEC Database Utility( Manual Method)**
- 2) COSEC Scheduler ( Automatic Method )**

## 1) COSEC Database Utility ( Manual Method)

*Path : Start → Matrix → COSEC → Database Utility*

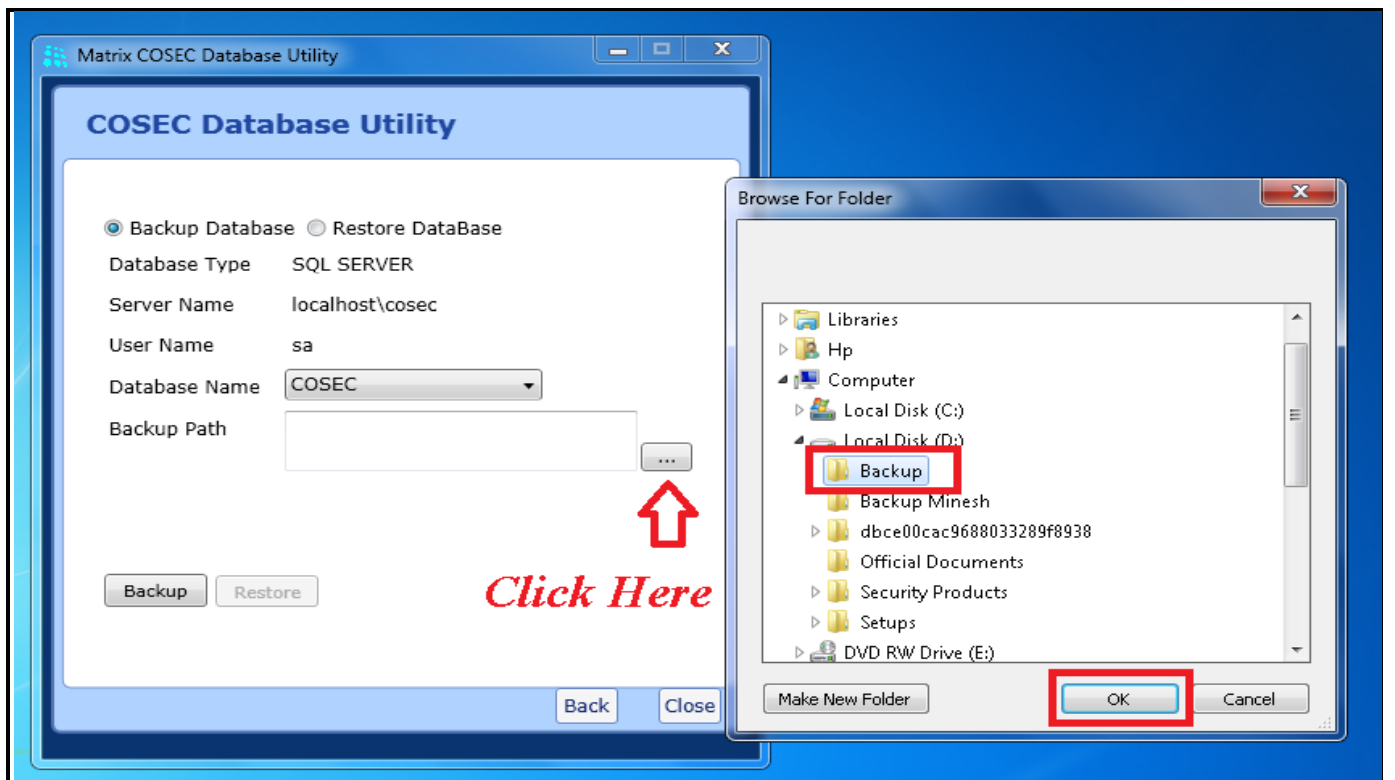
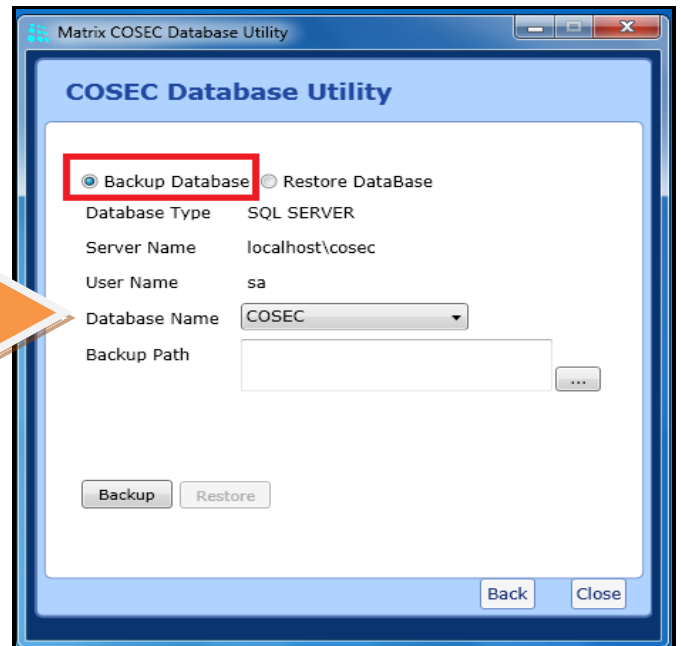
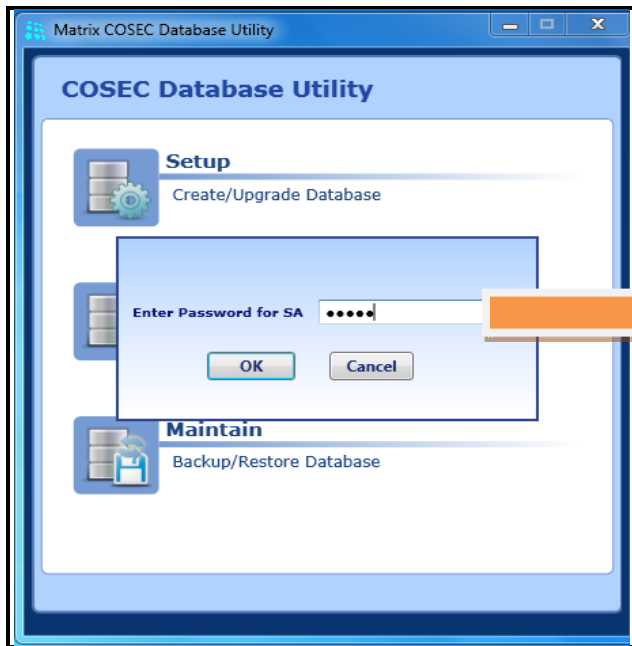


Maintain option should be selected for Backup/Restore

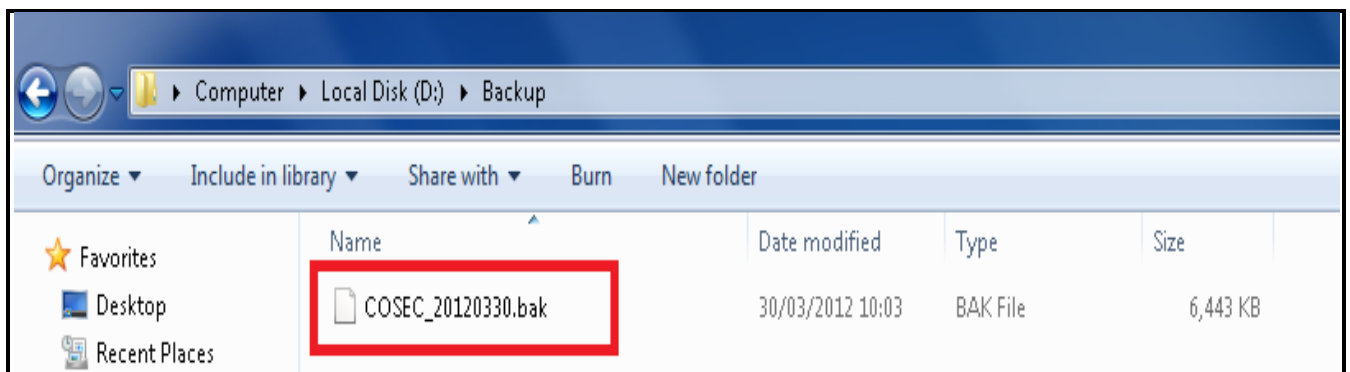
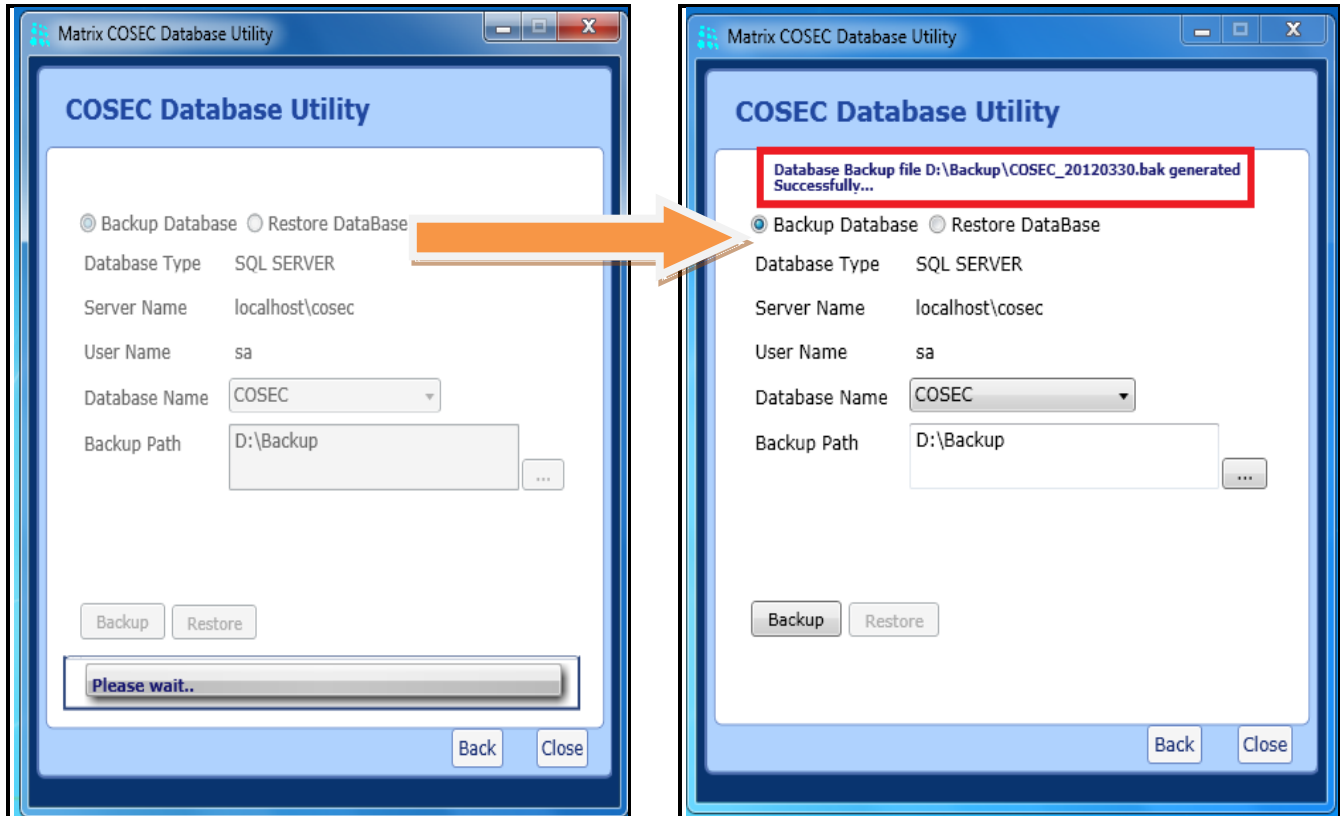
User will be prompt to enter the SA password (password to be entered here, is same as for Web Application)

Then, Backup option is to be selected and the path on which one wants to take the backup.

It is to be ensured that SQL server user is having full rights to access the folder which is selected for the Backup.



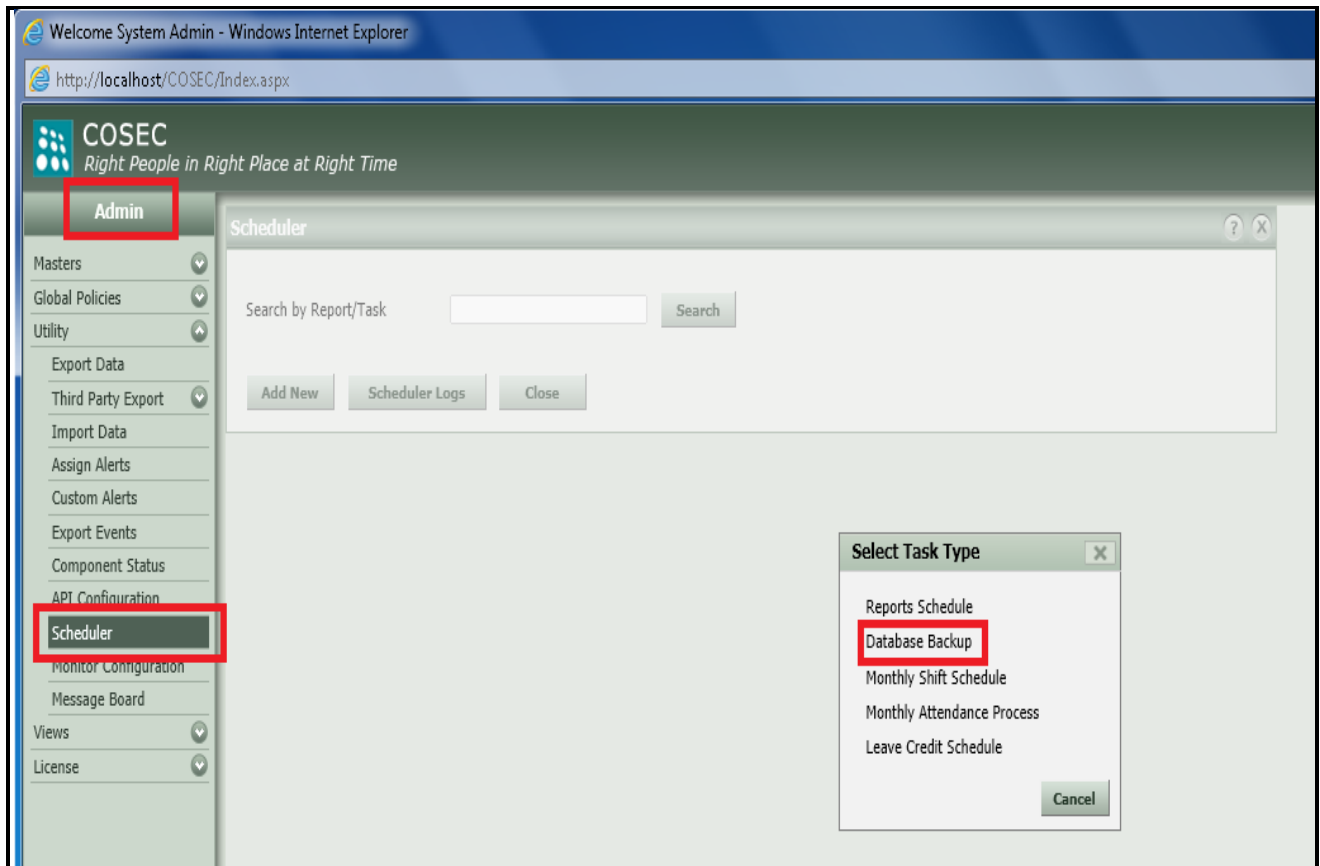
Selecting Backup option will generate the backup on the selected path as shown below:



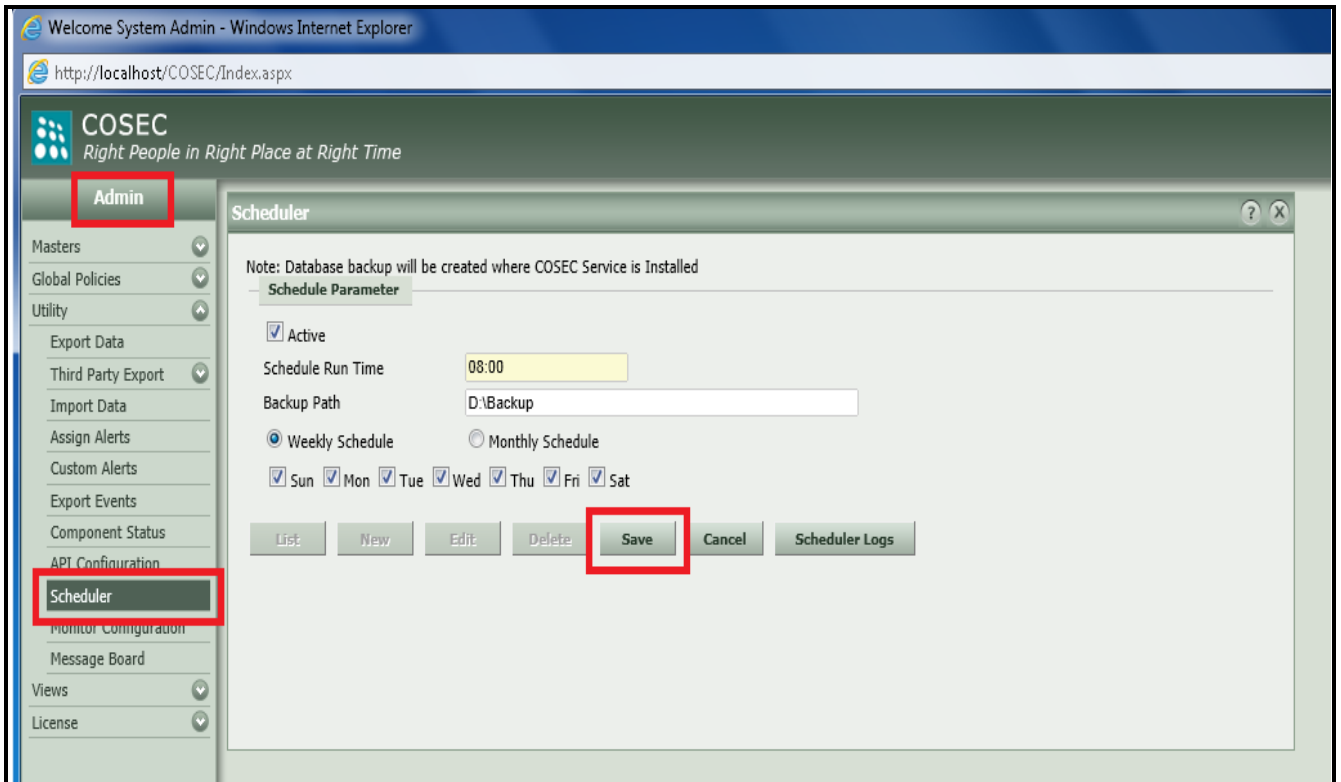
## 2) COSEC Scheduler ( Automatic Method)

One may configure scheduled database backup through COSEC Web as shown below:

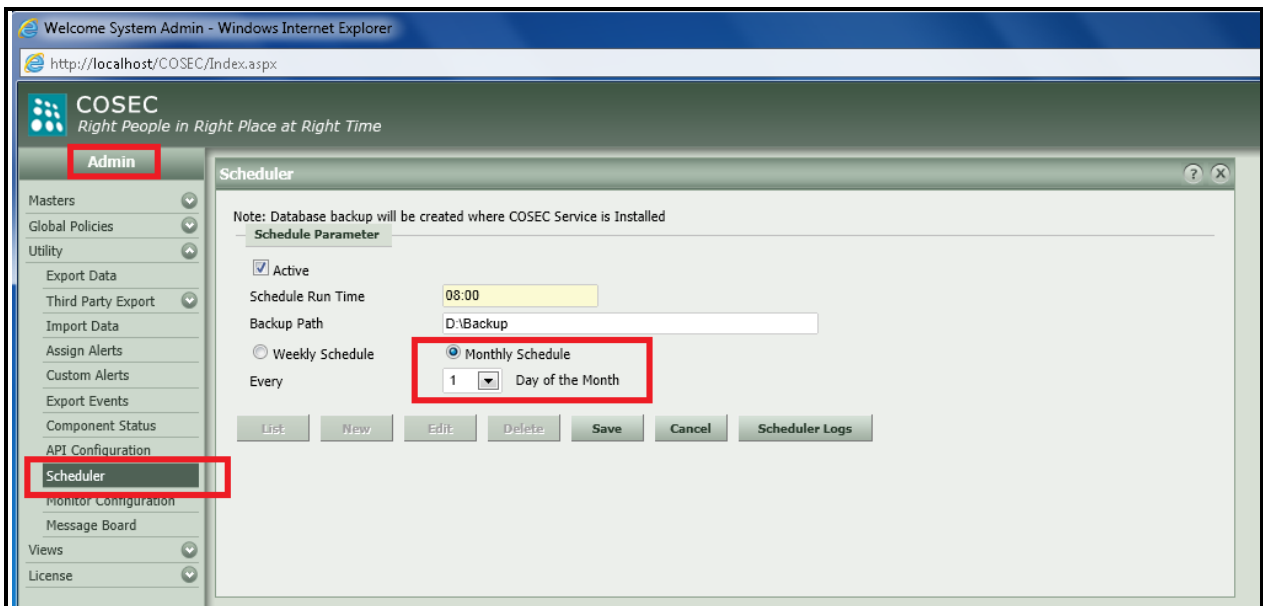
**Path:** *Admin module →Utility →Scheduler*



Scheduler task of Database backup should be added



Database backup path should be specified and weekly or monthly schedule should be configured as per the requirements



**Active:** To keep the scheduler active or inactive.

**Schedule Run Time:** Specify the time at which the scheduler will run the backup.

**Backup Path:** Specify the path at which the Backup will be generated.

**In case if you don't specify the backup path, by default it is stored in the following location.**

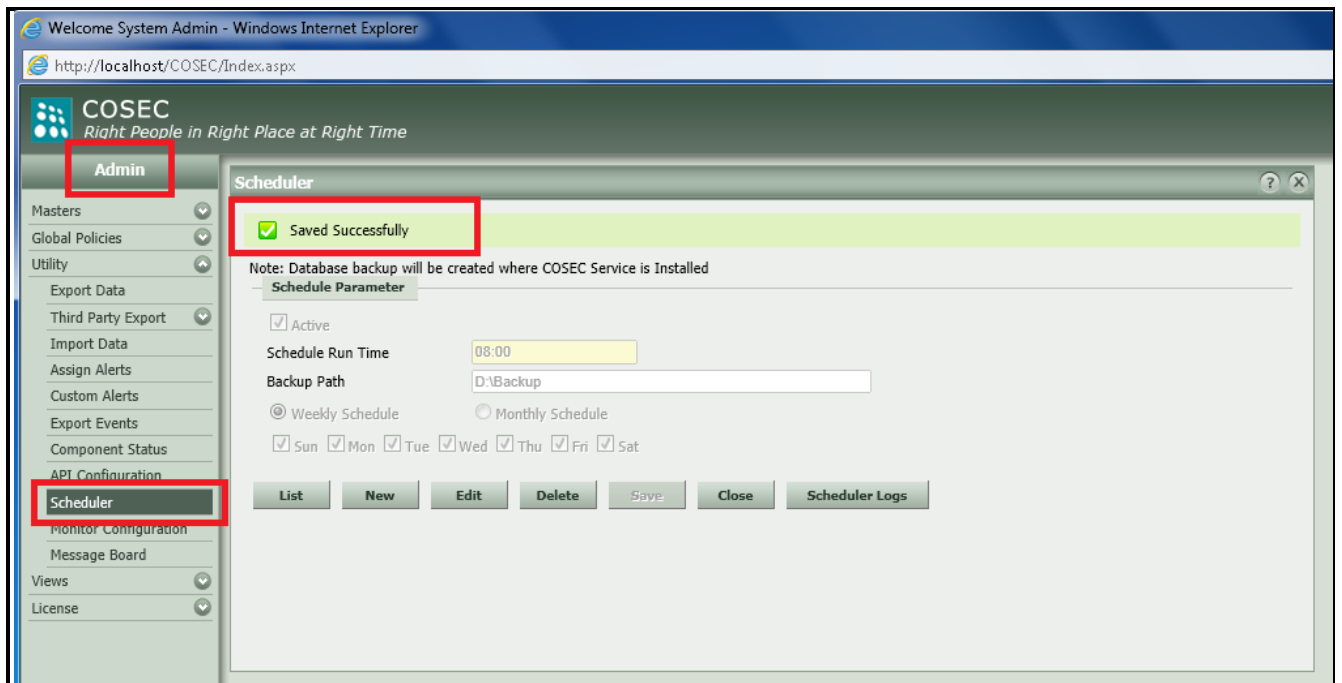
***C:\Program Files\Matrix\Matrix COSEC ALERTS\Backup***

**Weekly Schedule:** Select the days on which the scheduler should run.

**Monthly Schedule:** Specify the day of the month on which this scheduler will run as shown below.

You can configure Weekly or Monthly schedule as per your requirement. Here we will configure weekly.

It is a good habit to take the backup of the database after all the things have been configured.



The scheduler of Database backup is shown configured as below:

The screenshot shows the COSEC Admin interface. The left navigation pane has 'Admin' and 'Scheduler' highlighted with red boxes. The main content area shows a 'Scheduler' window with a search bar and a table. The table has the following data:

ID	Report/Task	Schedule Time	Schedule Mode	Active
1	Database Backup	08:00	Weekly	Yes

Below the table are buttons for 'Add New', 'Scheduler Logs', and 'Close'.

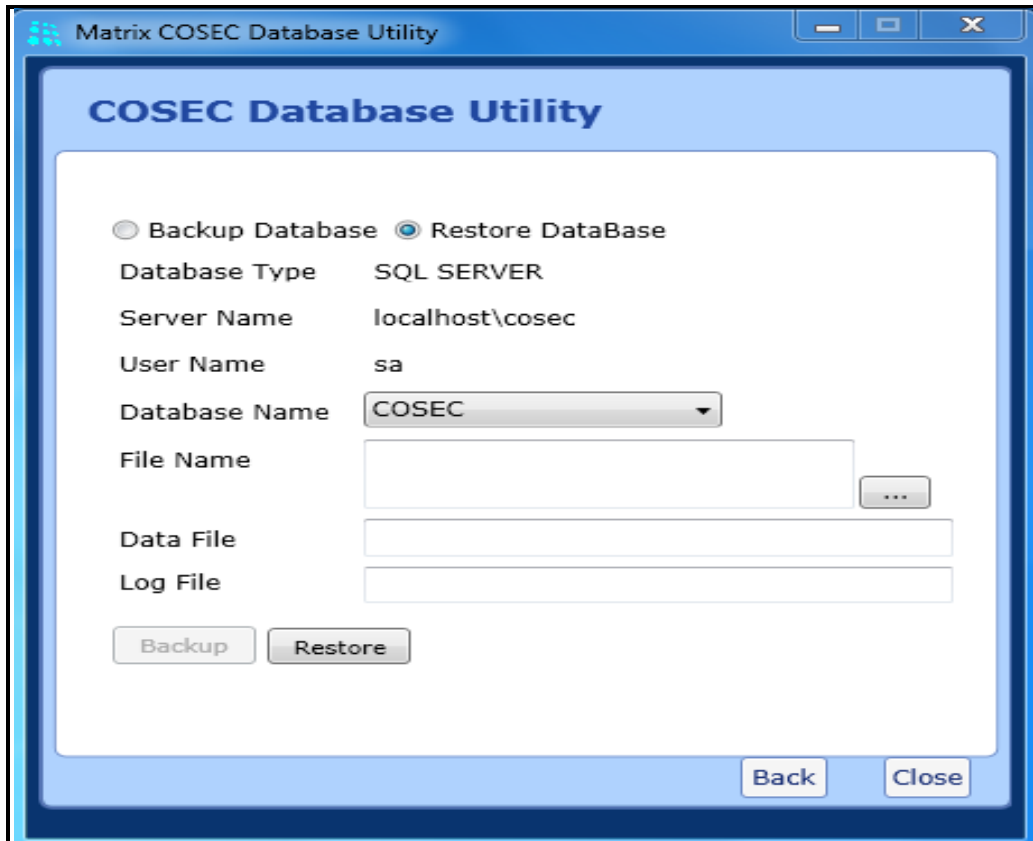
**Note:** COSEC Alert Service should be active for the above functionality to work. In case, if the backup path is not been specified, by default, it will be stored at the following location:

*C:\Program Files\Matrix\Matrix COSEC ALERTS\Backup*

## *How to Restore the COSEC database?*

One may restore the COSEC database from the COSEC database Utility as shown below:

Path: *Cosec Database Utility* → *Maintain* → *Restore database*

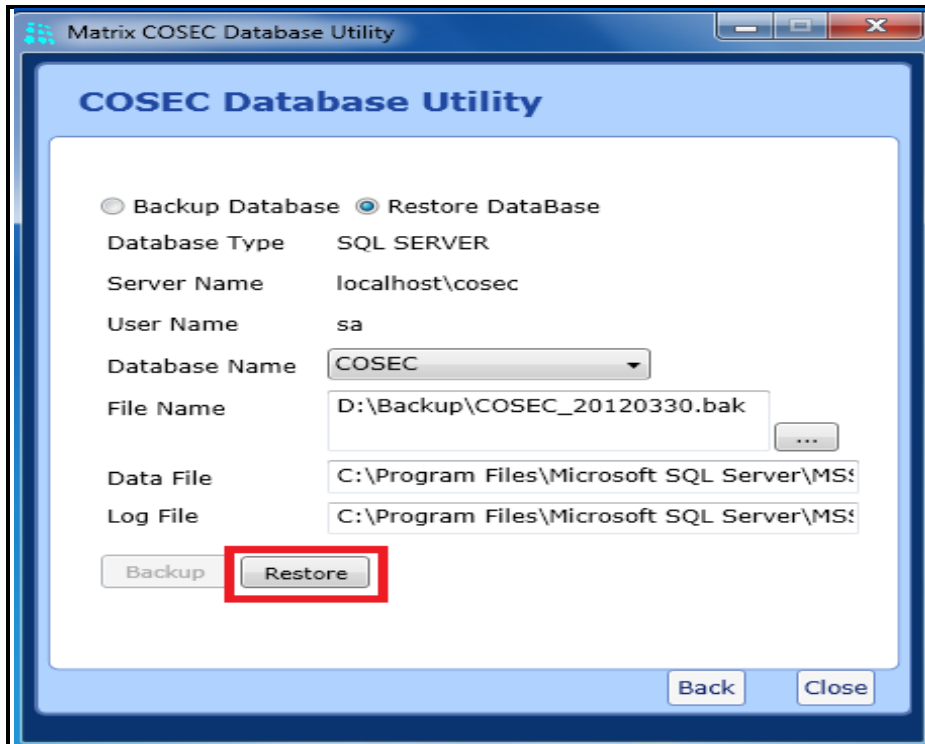
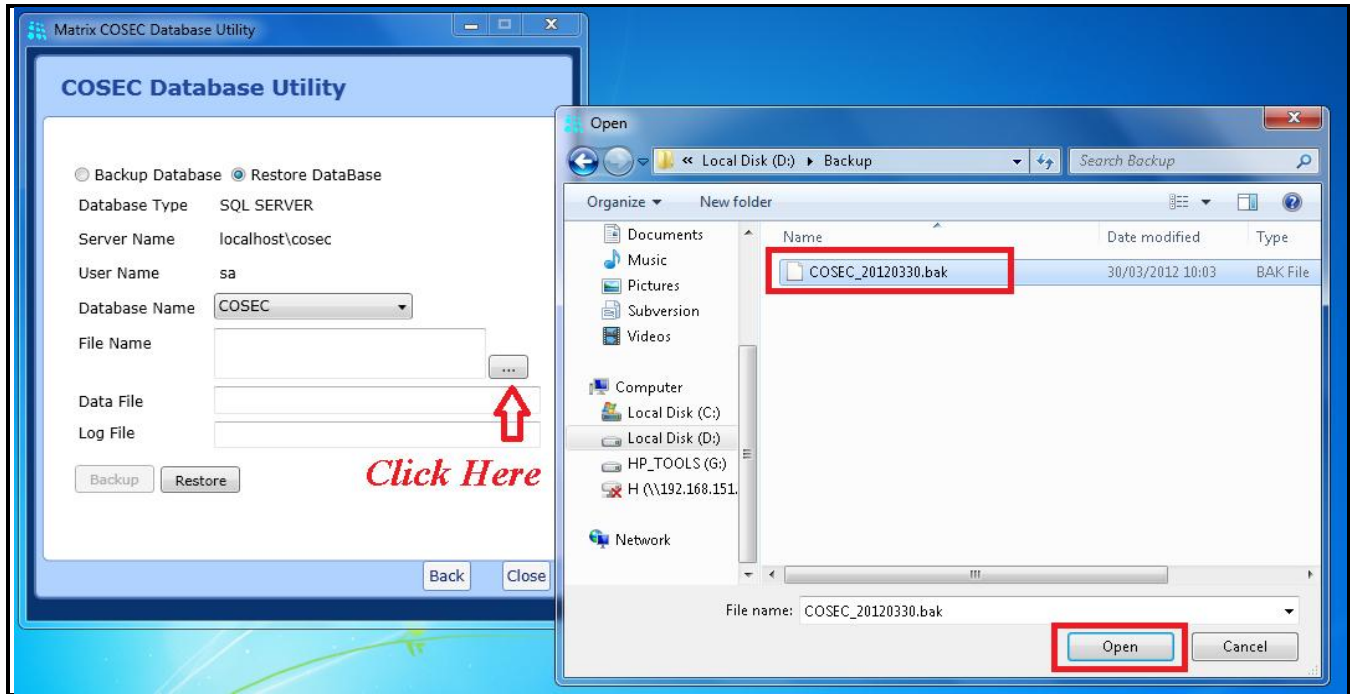


The screenshot shows the 'Matrix COSEC Database Utility' window. The title bar reads 'Matrix COSEC Database Utility'. The main window has a blue header with the text 'COSEC Database Utility'. Below the header, there are two radio buttons: 'Backup Database' (unselected) and 'Restore DataBase' (selected). The configuration fields are as follows:

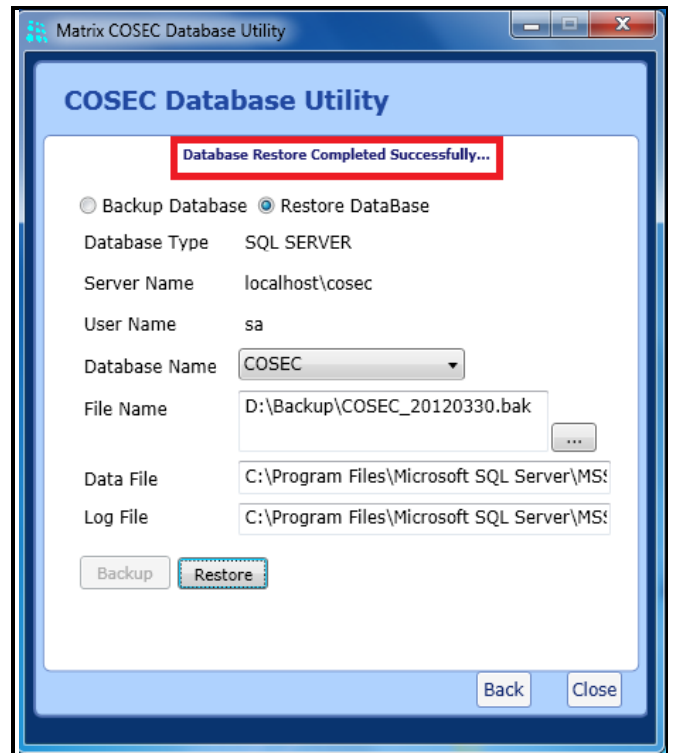
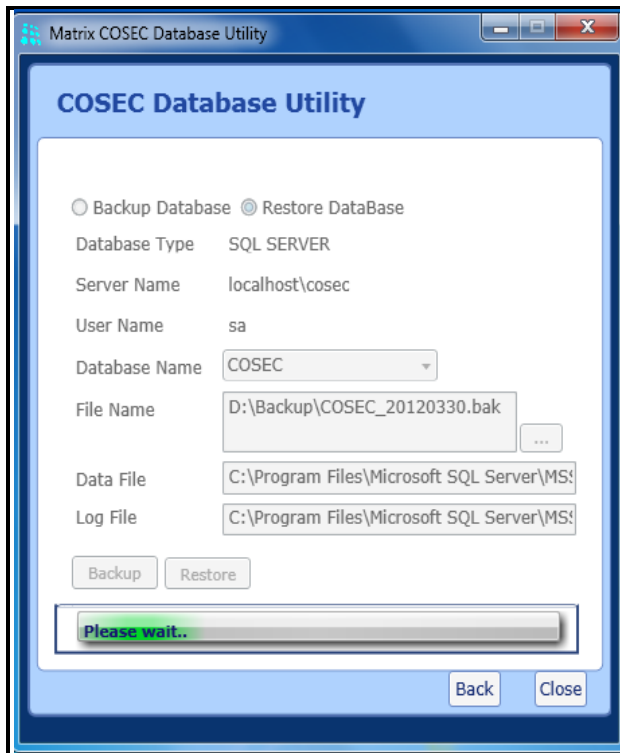
Database Type	SQL SERVER
Server Name	localhost\cosec
User Name	sa
Database Name	COSEC
File Name	[Empty text box with browse button]
Data File	[Empty text box]
Log File	[Empty text box]

At the bottom of the window, there are four buttons: 'Backup', 'Restore', 'Back', and 'Close'.

COSEC database Backup File should be browsed (wherever stored in the local machine)



“Restore” option should be selected



**Note:** COSEC Alert and COSEC Monitor *must not be running* during the database restoration procedure.

**Thanks & Regards,**

Technical Support Team – Security Product

Matrix ComSec, Vadodara, India

E-mail: [support@MatrixComsec.com](mailto:support@MatrixComsec.com)

**Disclaimer:** The information contained in this e-mail and/or attachments to it may contain confidential or privileged information. Unauthorized use, disclosure or copying is strictly prohibited and may constitute unlawful act and can possibly attract legal action, civil and/or criminal. The contents of this message need not necessarily reflect or endorse the views of Matrix Telecom Pvt. Ltd on any subject matter. Any action taken or omitted to be taken based on this message is entirely at your risk. Neither the originator of this message nor Matrix Telecom Pvt. Ltd takes any responsibility or liability towards the same. If you are not the intended recipient, please notify us immediately and permanently delete the message.