

Matrix Technical Support Mailer – 19

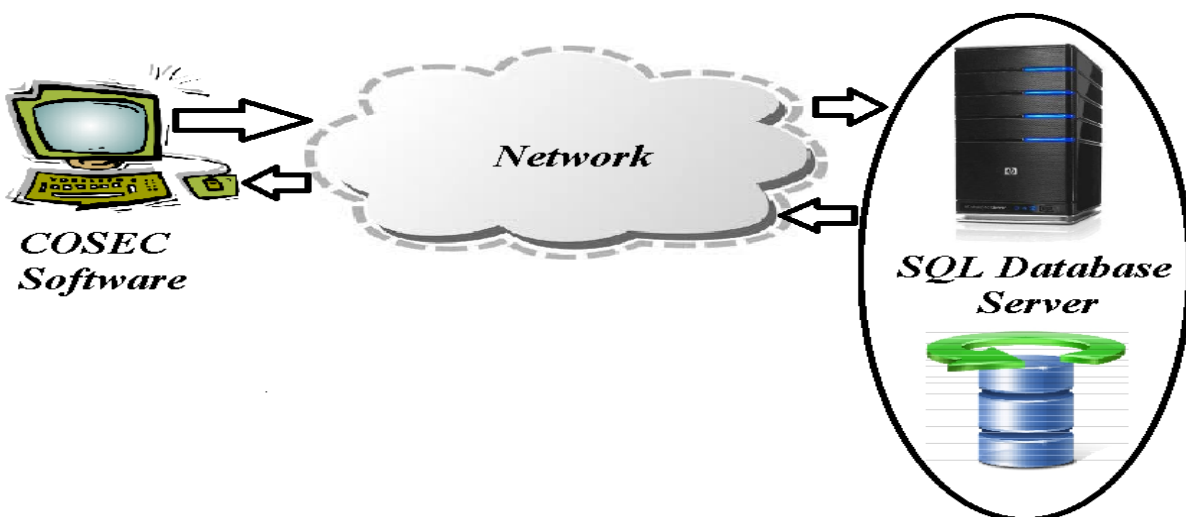
How to Install COSEC software if COSEC database and Web Application are in different PC

Dear Friends,

This technical mailer will help you to understand how to install the COSEC Database in one PC and Matrix COSEC software in another PC.

Moreover, if the customer is having their SQL Database Server then we can create the database in that server and install the software in the local PC.

Let us take one scenario, COSEC Software is installed in one pc and SQL server is on another PC. Following is the application Diagram.



Now the settings which you need to do are as below:

- 1) Install the COSEC software in the PC**
- 2) Collect the SQL server information**
- 3) Connect to the SQL server through the COSEC Database Utility.**

We will go through each steps one by one so start with point one.

1) Install the COSEC software in the PC

First of all verify the pre requisites of the software installation and then insert the COSEC Installer CD in the PC.

Note: Before installing the COSEC software, IIS must be pre installed in the PC.

Run the COSEC installer and install the COSEC Software.

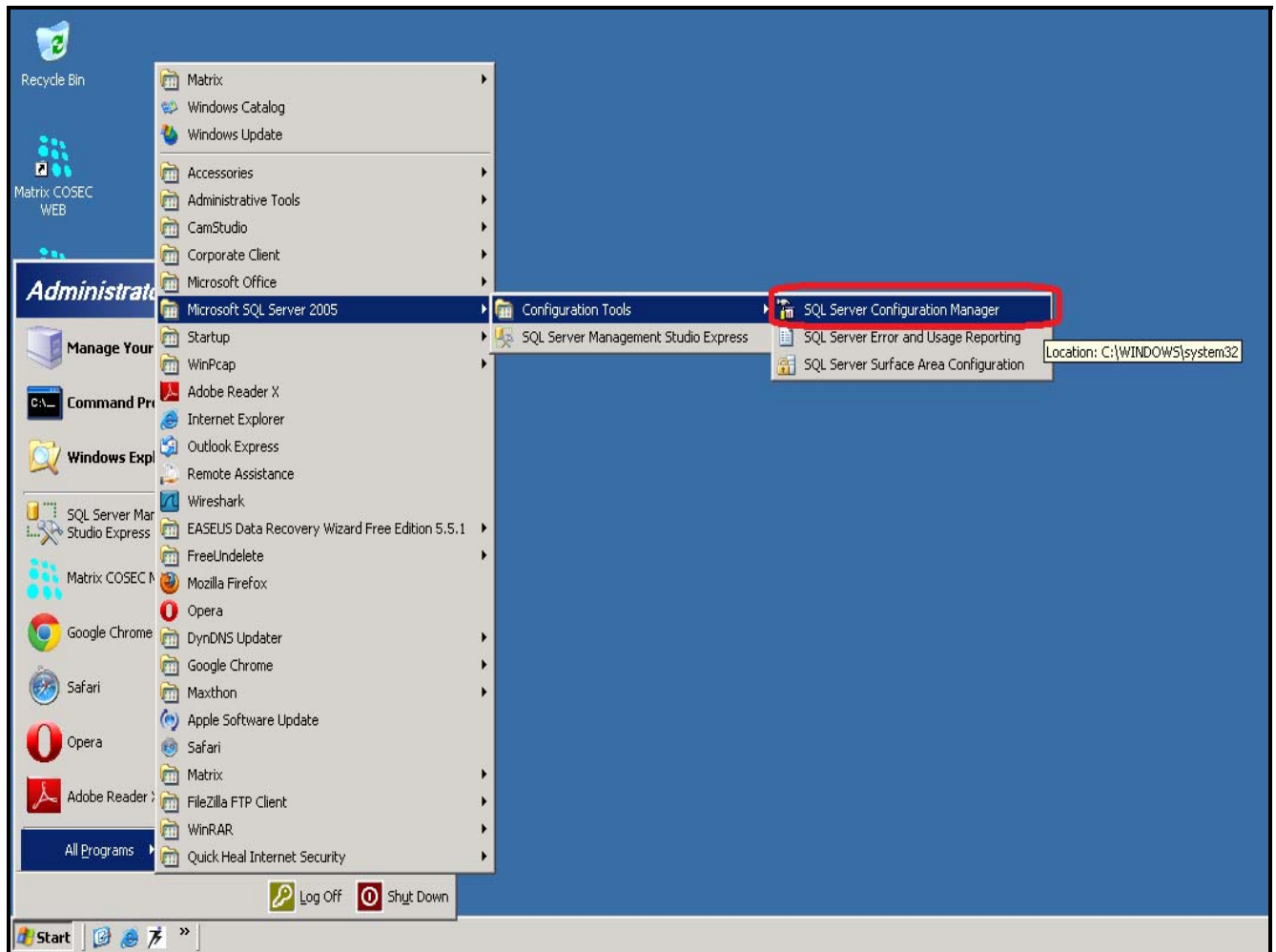
Now moving to next point,

2) Collect the SQL server information

Things to be noted:

- i. TCP/IP Port Of the SQL Server
- ii. IP Of the SQL Server PC
- iii. SQL instance Name

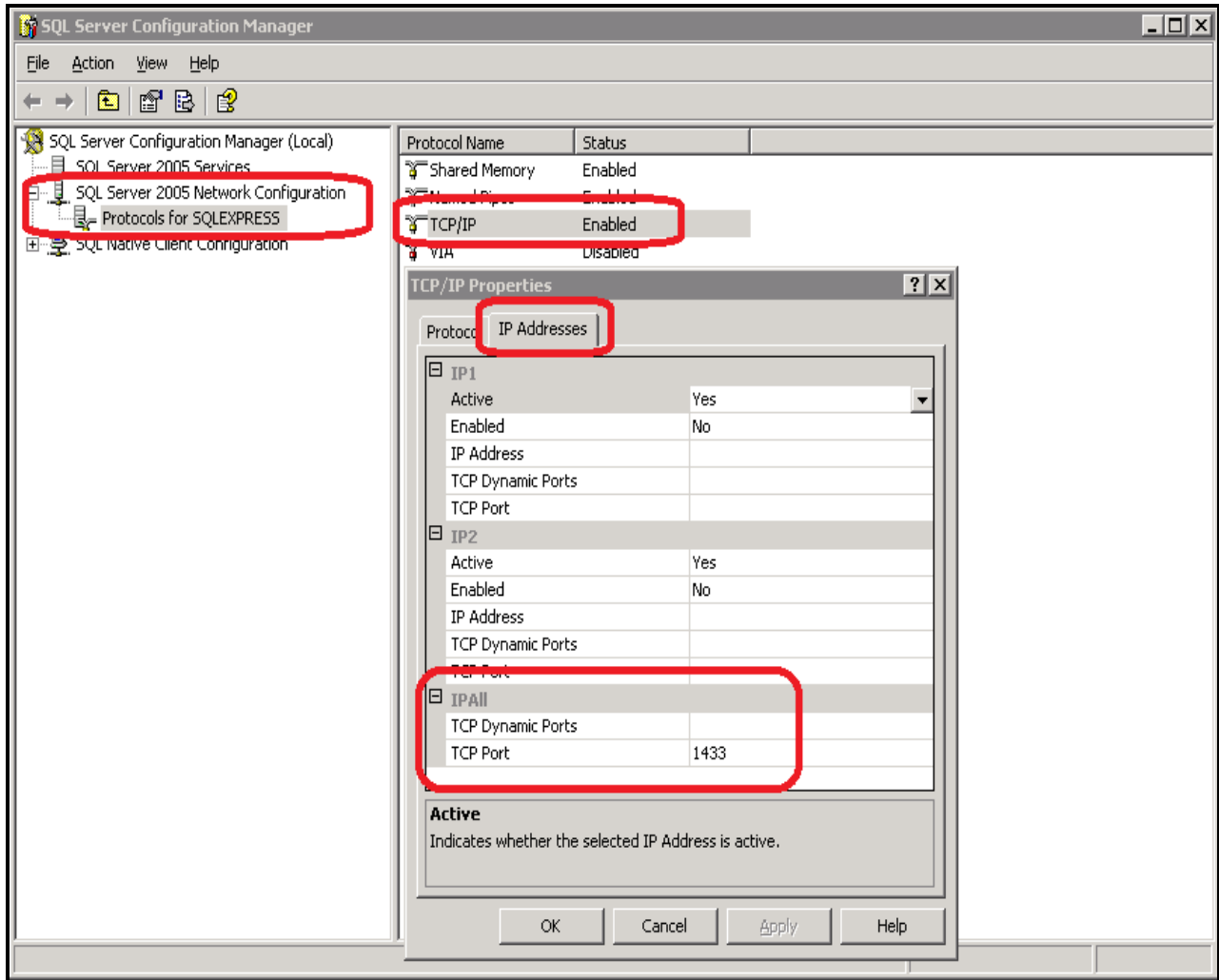
This is the most important part, so ,as shown below, open the SQL Server Configuration Manager in the SQL Server PC.



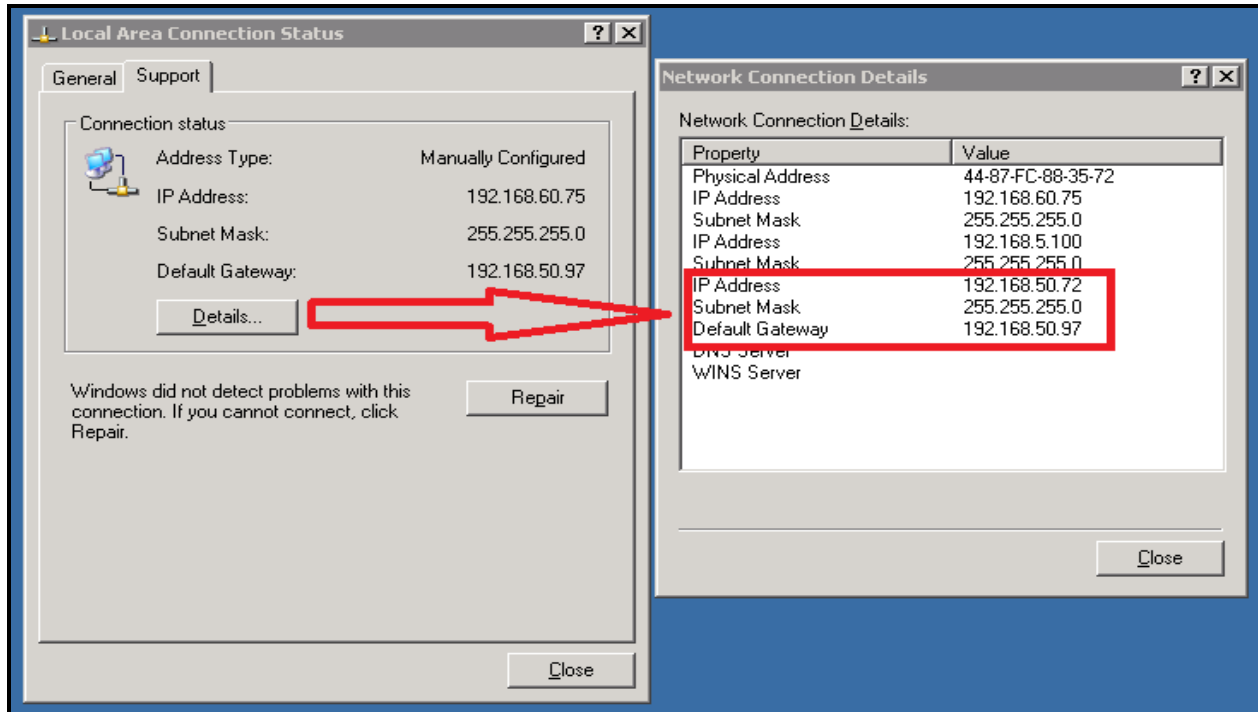
Then click on SQL server 2005 Network Configuration→Protocols for SQLEXPRESS.

In that on the Right Hand Side double click on the TCP/IP and go to IP addresses and see the TCP port.

Here SQLExpress is the instance name which is the default instance of the SQL Server.



And also note down the IP address of the SQL server PC.



Things to be noted:

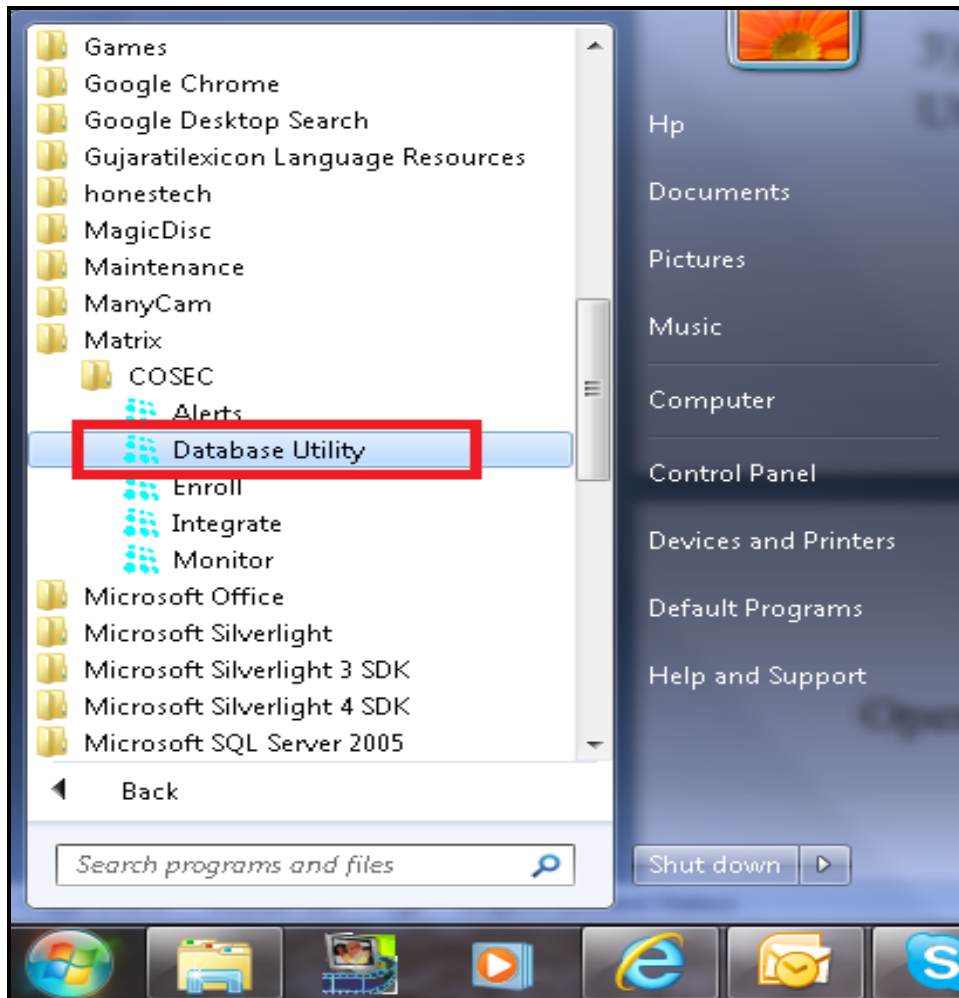
- i. TCP/IP Port Of the SQL Server: 1433
- ii. IP Of the SQL Server PC:192.168.50.72
- iii. SQL instance Name: SQLEXPRESS

Above data values are specific to current scenario.

Now coming to the last step.

3) Connect to the SQL server through the COSEC Database Utility.

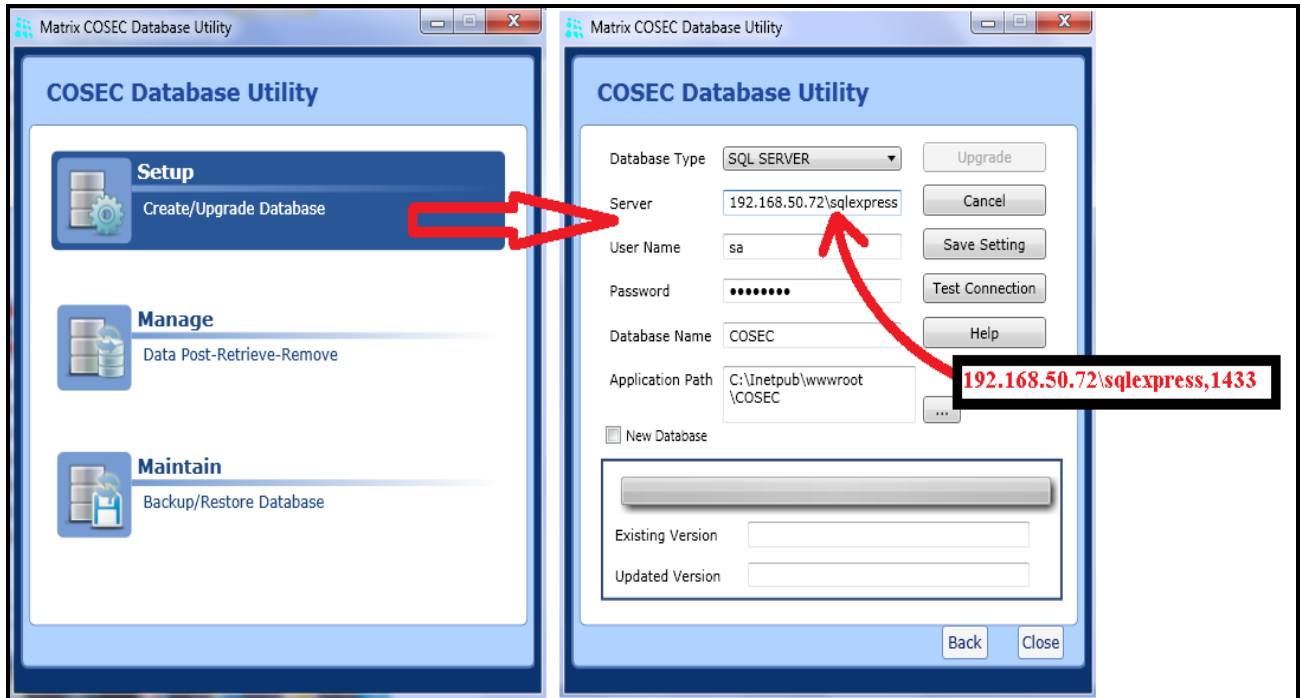
Open the COSEC Database Utility.



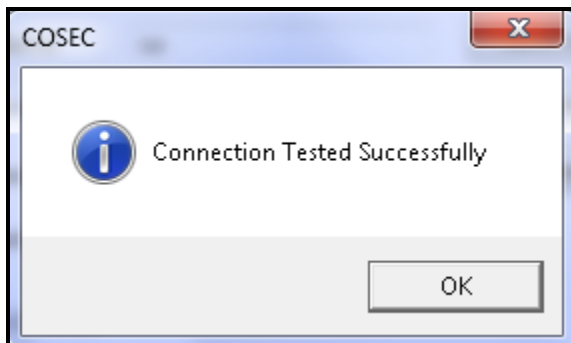
Click on Setup and then click on Change Setting.

In the server field give the server name as shown below:

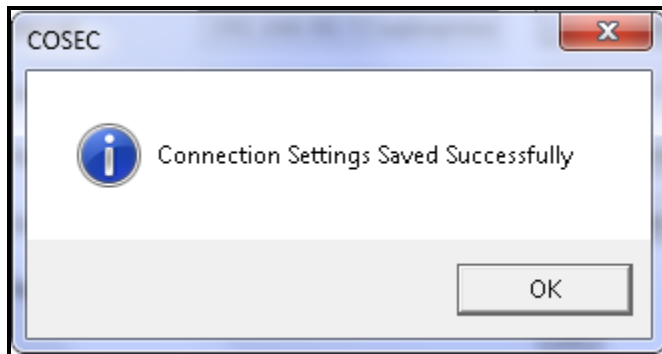
IP_OF_SQL_SERVER\INSTANCE_NAME,TCP_PORT_OF_SQL_SERVER



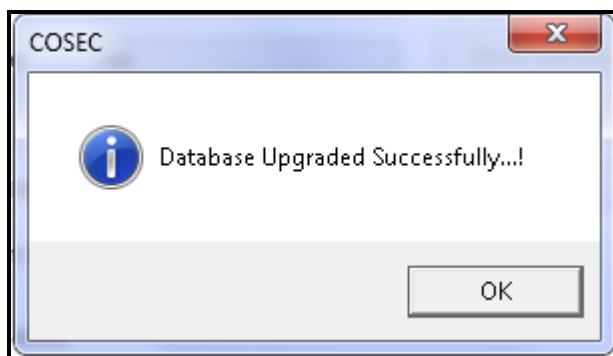
Then click on create, if the database is not created and if you have created the database, then uncheck new database and click on Test Connection.



Successful connection will be showed by the message. Then, select save settings.



Finally , click on Upgrade option.



Now the configuration is successful and we have completed the scenario.

Note: *If the database server is located on the remote pc behind the router then you need to forward the TCP/IP port of the SQL Server to the local PC.*

For Example in this current scenario, my WAN IP is 115.118.161.163 on the SQL server side and local pc IP is 192.168.50.72 and SQL Server TCP port is 1433.

So I need to forward 1433 port to the 192.168.50.72 in the Router for accessing this SQL database from outside of the local network.

So now my server configurations in COSEC Database Utility will be as below.

115.118.161.163\SQLExpress,1433

Summary:

We have seen how to configure COSEC Software in case of Database in another PC in the local network or in the public network.

Thanks & Regards,

Technical Support Team – Security Products

Matrix ComSec, Vadodara, India

E-mail: support@MatrixComsec.com

Disclaimer: The information contained in this e-mail and/or attachments to it may contain confidential or privileged information. Unauthorized use, disclosure or copying is strictly prohibited and may constitute unlawful act and can possibly attract legal action, civil and/or criminal. The contents of this message need not necessarily reflect or endorse the views of Matrix Telecom Pvt. Ltd on any subject matter. Any action taken or omitted to be taken based on this message is entirely at your risk. Neither the originator of this message nor Matrix Telecom Pvt. Ltd takes any responsibility or liability towards the same. If you are not the intended recipient, please notify us immediately and permanently delete the message.