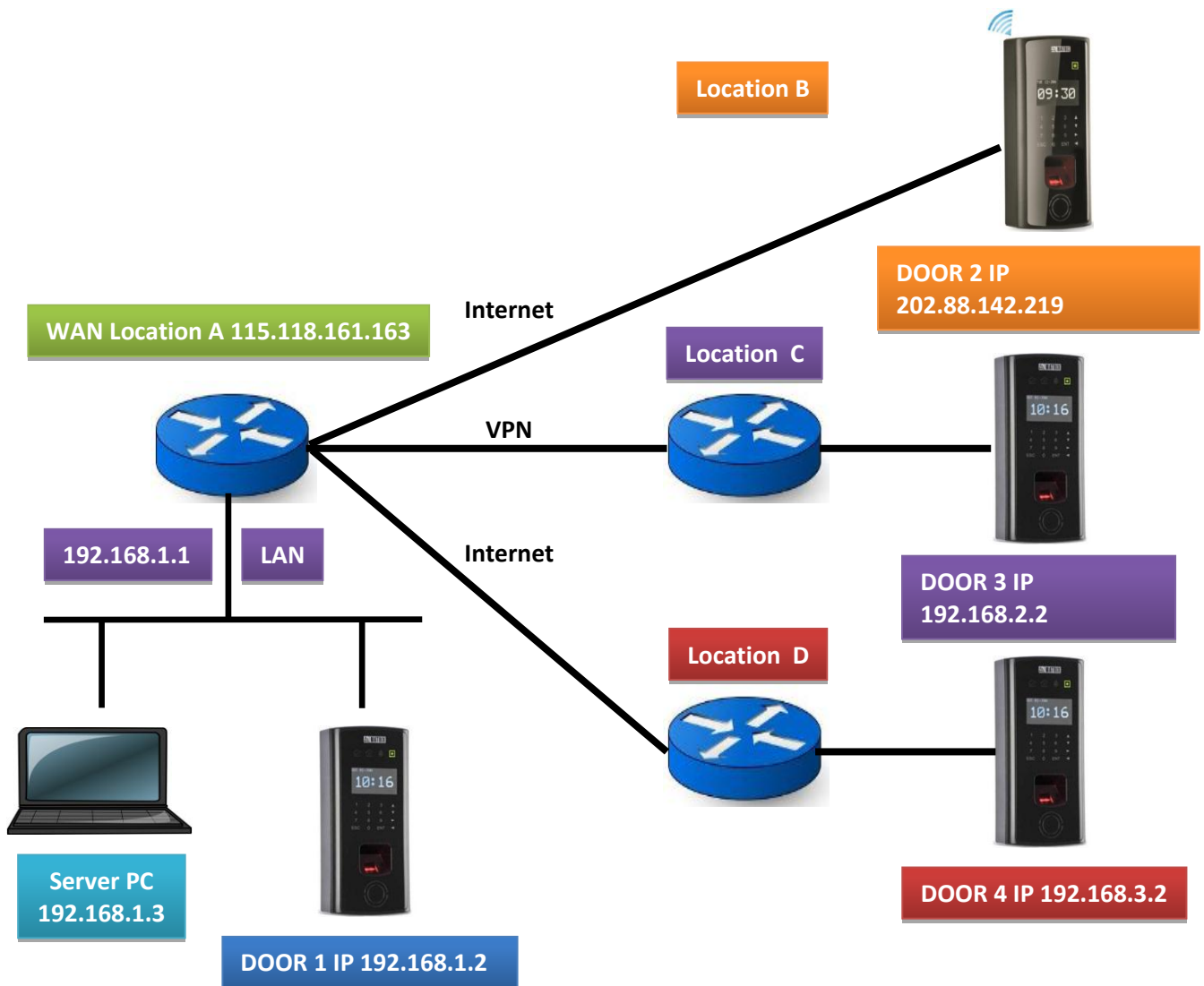


Matrix Technical Support Mailer – 1 Multi Location Connectivity of COSEC Door Controller

Dear Friends,

This mailer helps you to install and configure COSEC software in an intranet environment.

Application Diagram:



Scenario Explanation:

- Location A is the main location having Server PC installed with the local IP address 192.168.1.3.
- WAN IP address of router at Location A is 115.118.161.163.
- DOOR1 is installed in LAN at Location A and LAN port IP address of DOOR1 is 192.168.1.2.
- LAN port IP address of Router at Location A is 192.168.1.1.

- Location D is connected with Location A over Public Internet.
- DOOR FOW is installed with USB Data card at Location B and its current IP address is 202.88.142.219.

- Location C is connected with Location A over VPN (Virtual Private Network).
- DOOR3 is installed in LAN at Location C and LAN port IP Address of DOOR3 is 192.168.2.2.
- LAN port IP address of Router at Location A is 192.168.2.1.

- Location D is connected with Location A over Public Internet.
- DOOR4 is installed in LAN at Location D and LAN port IP Address of DOOR4 is 192.168.3.2.
- LAN port IP address of Router at Location A is 192.168.3.1.

Note: Server IP for COSEC DOORs connected in LAN or VPN will be the Local IP address of server PC (192.168.1.3 in this scenario).

Note: Server IP for COSEC DOORs connected over Internet will be the WAN IP address of Router at the server location (115.118.161.163 in this scenario).

Configuration on Location A:

- Set Server PC IP as 192.168.1.3.
- Set DOOR 1 IP as 192.168.1.2.
- Set Gateway address in DOOR device 1 as 192.168.1.1.
- Set Server IP in door device 1 as 192.168.1.3.
- Set port forward in Router of Location A for port 11000 for server communication of DOOR 2, 3 and 4. i.e. forward port 11000 to local IP address of Server PC 192.168.1.3 in this case.

Configuration on Location B:

- Set Mobile broadband parameters of the DOOR FOW.
- Set Server IP in door device 2 (DOOR FOW) as 115.118.161.163 (IP address of WAN port of router at Location A as Location A and Location B are connected over public Internet).

Configuration on Location C:

- Set DOOR 3 IP as 192.168.2.2.
- Set Gateway address in DOOR device 3 as 192.168.2.1.

- Set server IP in door device 3 as 192.168.1.3 (IP address of LAN port of router at Location A as Location A and Location C are connected over VPN).

Configuration on Location D:

- Set DOOR 4 IP as 192.168.3.2.
- Set Gateway address in DOOR device 4 as 192.168.3.1.
- Set server IP in door device 4 as 115.118.161.163 (IP address of WAN port of router at Location A as Location A and Location D are connected over public Internet).

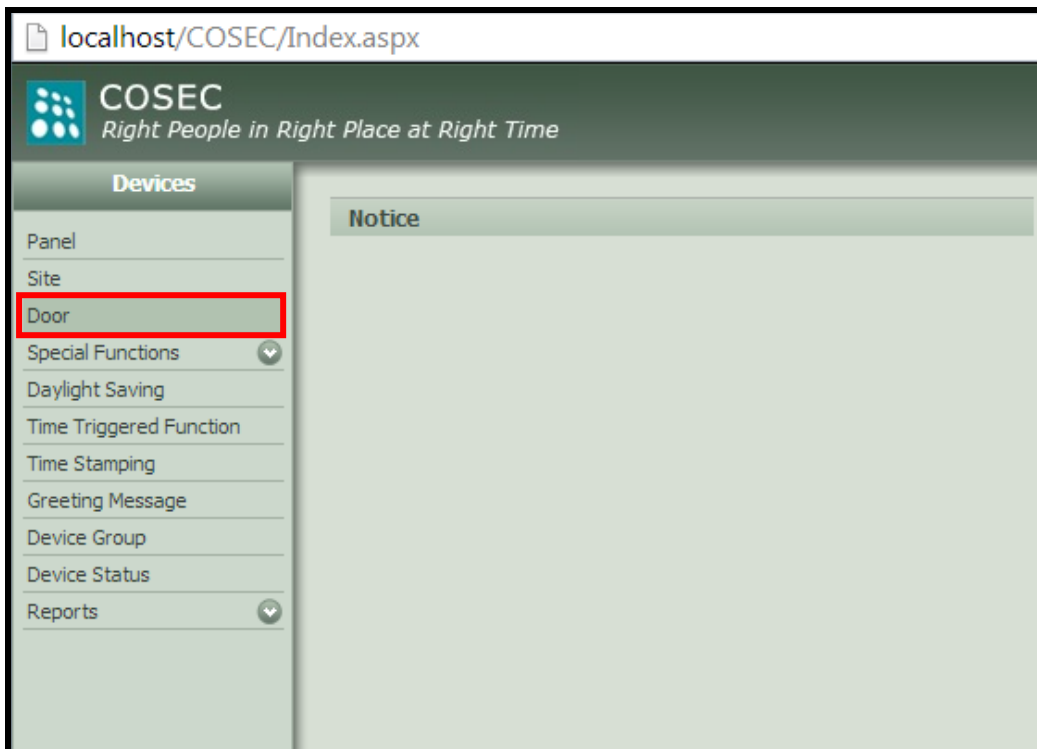
Software Configuration for Connecting Doors:

Step 1: Open webpage by typing <http://localhost/cosec> in internet explorer on server PC in which the COSEC software is installed or in case you are using the local PC other than the server PC then type http://IP_of_server/cosec (If IP address of server PC is 192.168.1.3 then type <http://192.168.1.3/cosec>).

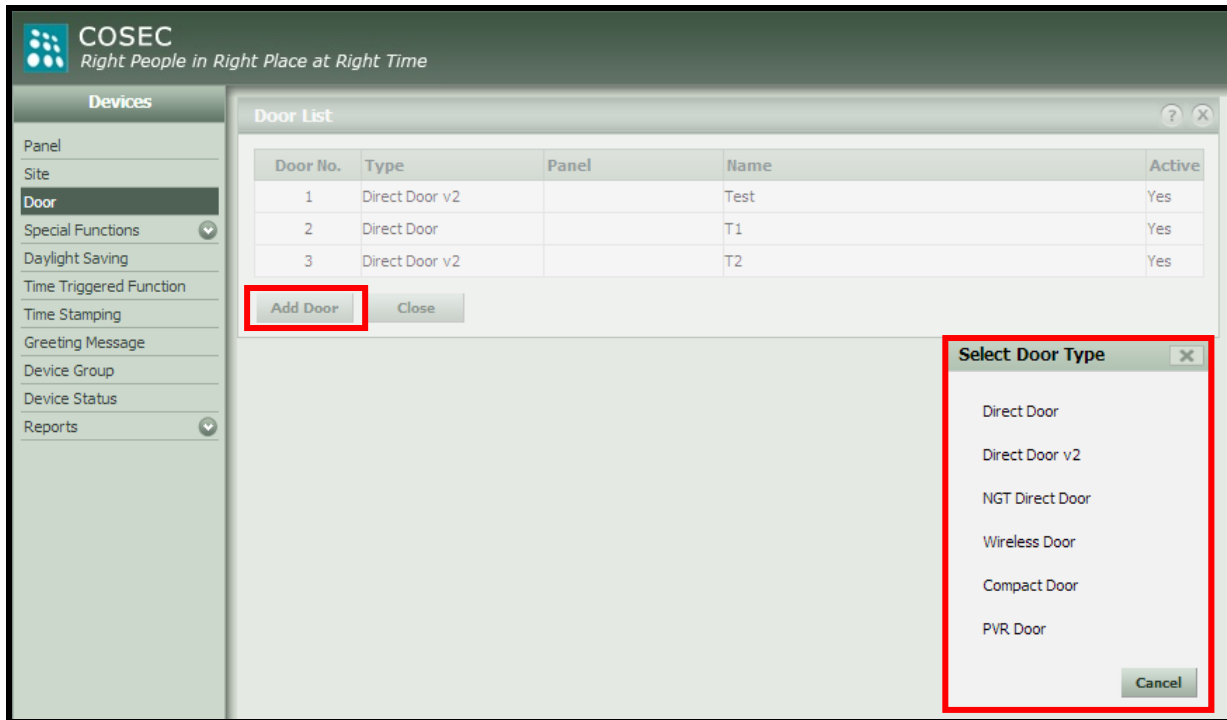
Step 2: Click on **Devices** once the GUI is opened.



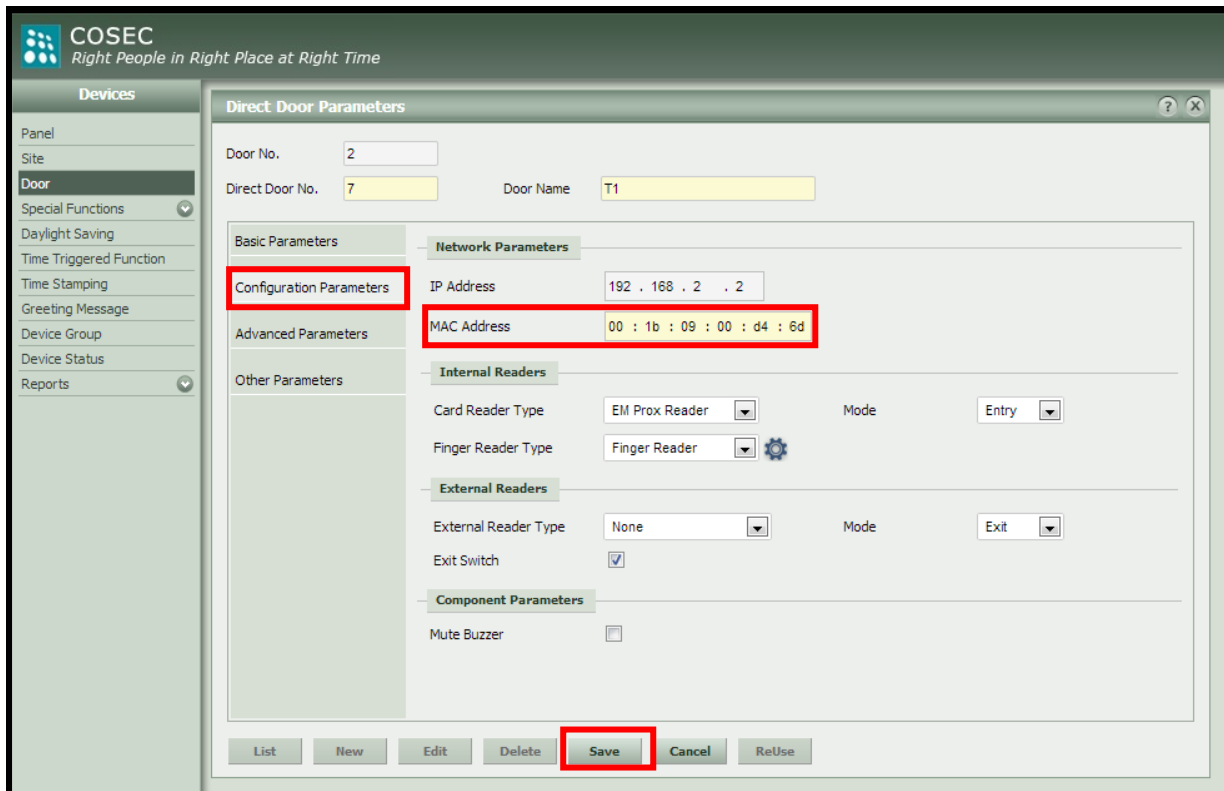
Step 3: Click on **DOOR** option in **Devices** Menu.



Step 4: Click on **Add DOOR** option in **DOOR** Menu and **Select DOOR Type** from the list.



Step 5: Program **MAC address** of DOOR 1 in **Configuration Parameters** of DOOR1.



Step 6: Follow step 4 and step 5 for DOOR 2, 3 and 4 as well.

Now all DOORs are configured.

Step 7: Open COSEC Monitor and check the latest status of the door. It should show status connected with the green indication.

The screenshot shows the Matrix COSEC MONITOR application. The top menu includes File, Device, Tools, and Help. On the left, there is a 'Features' sidebar with options like Alarms, I/O Link, Soft Override, Events, Exceptions, and Time Triggered Functions. Below that is the 'User Details' section, which shows a placeholder for a user profile and a green 'Allowed' button. The main area is divided into two tables:

Name	IP/RS485 Address	MAC Address	Type	Status
T1	192.168.2.2	00:1b:09:00:d4:6d	Direct Door	Connected
Test	192.168.51.96	00:1b:09:01:16:a2	Direct Door v2	Disconnected
T2	192.168.1.2	00:1b:09:01:31:bf	Direct Door v2	Connected

Sr No.	Date Time	Type	Device	Category	Detail
22920	26/11/2013 06:04:12 PM	Direct Door v2	T2	ACK	⇒ Event Ack for RollOver: 0 Event Seq. No.: 11374
22921	26/11/2013 06:04:12 PM	Direct Door v2	T2	System	⇒ Power ON Event Date Time: 26/11/2013 05:43:08 PM
22922	26/11/2013 06:04:12 PM	Direct Door v2	T2	ACK	⇒ Event Ack for RollOver: 0 Event Seq. No.: 11375
22923	26/11/2013 06:04:12 PM	Direct Door v2	T2	System	⇒ Power ON Event Date Time: 26/11/2013 05:54:15 PM
22924	26/11/2013 06:04:12 PM	Direct Door v2	T2	ACK	⇒ Event Ack for RollOver: 0 Event Seq. No.: 11376
22925	26/11/2013 06:04:12 PM	Direct Door v2	T2	System	⇒ Power ON Event Date Time: 26/11/2013 05:55:04 PM
22926	26/11/2013 06:04:12 PM	Direct Door v2	T2	ACK	⇒ Event Ack for RollOver: 0 Event Seq. No.: 11377
22927	26/11/2013 06:05:57 PM	Direct Door v2	T2	Request	⇒ Message Request Received
22928	26/11/2013 06:05:57 PM	Direct Door v2	T2	Other	⇒ Basic Configuration Sent. TID: 1311260040000019

For more information, contact:
 Technical Support Team
 Matrix Comsec, Vadodara, India.
Support@MatrixComSec.com

Disclaimer: The information contained in this e-mail and/or attachment may contain confidential or privileged information. Unauthorized use, disclosure or copying is strictly prohibited and may constitute unlawful act and can possibly attract legal action, civil and/or criminal. The contents of this message need not necessarily reflect or endorse the views of Matrix Comsec Pvt. Ltd on any subject matter. Any action taken or omitted on this message is not entirely at your risk and the originator of this message nor does Matrix Comsec Pvt. Ltd take any responsibility or liability towards the same. If you are not the intended recipient, please notify us immediately and permanently delete the message.