

Matrix Technical Support Mailer

DVR Integration with COSEC

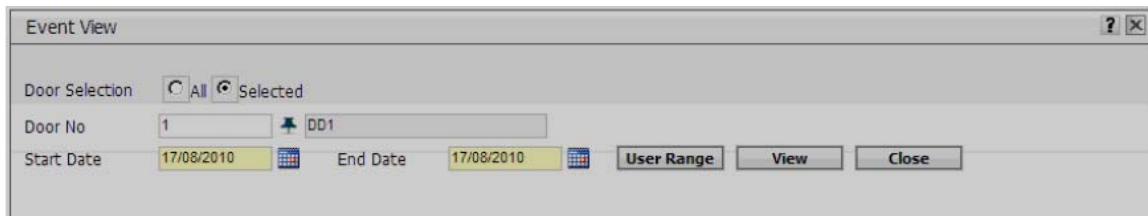
Dear Friends,

Matrix COSEC provides a comprehensive, end to end Time Attendance and Access Control solution. This script will help the Matrix installer to integrate DVR (Digital Video Recorder) with COSEC system.



The COSEC system interfaces with the Dahua DVR and enables the users to grab images triggered by user events at the respective doors. The user events and related images can be viewed from the Event View option of the Admin module.

In order to access this functionality, go to **Admin** → **Views** → **Event View** page appears as shown below.



The door selection option enables the administrator to select the doors from which the user events are to be viewed. The functionality offers two options:

All: View events from all doors.

Selected: View events from the selected door only.

Select the **Start** and **End Date** to specify the time period of the user events to be viewed.

Click on the User Range button to select the users whose events at the doors are to be viewed. The multiple selection section allows you the following options for multiple user selection:

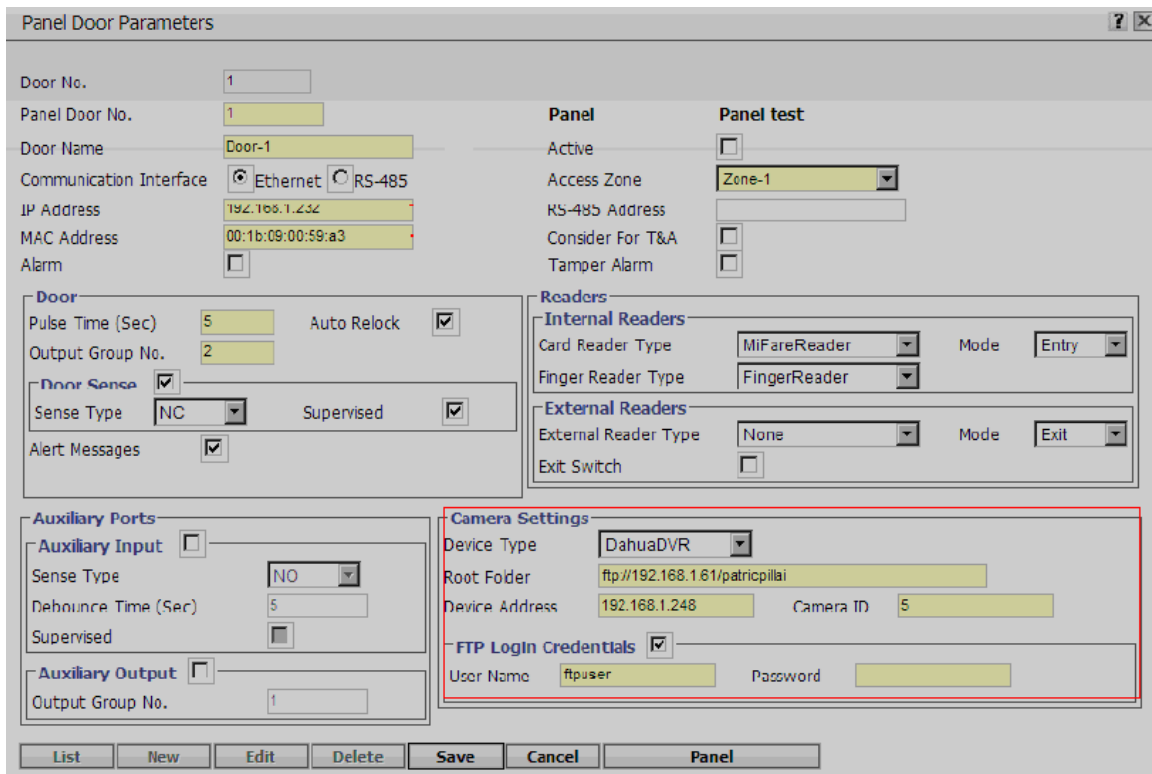
- All
- Selected Groups

to the initial Event View page as shown above. Click on **View** to continue. The user events will be displayed as shown.

Configuring the DVR Parameters

To Configure DVR parameters, go to Module Selection → Access Controls → Doors.

Select appropriate Door from the pickup list, it will show you the below configuration page. Set the DVR Parameters as shown in red border.



Panel Door Parameters

Door No.

Panel Door No.

Door Name

Communication Interface Ethernet RS-485

IP Address

MAC Address

Alarm

Panel

Panel test

Active

Access Zone

RS-485 Address

Consider For T&A

Tamper Alarm

Door

Pulse Time (Sec) Auto Relock

Output Group No.

Door Sense

Sense Type Supervised

Alert Messages

Readers

Internal Readers

Card Reader Type Mode

Finger Reader Type

External Readers

External Reader Type Mode

Exit Switch

Auxiliary Ports

Auxiliary Input

Sense Type

Debounce Time (Sec)

Supervised

Auxiliary Output

Output Group No.

Camera Settings

Device Type

Root Folder

Device Address Camera ID

FTP Login Credentials

User Name Password

List New Edit Delete Save Cancel Panel



Device Type: Select the DVR to which the camera is connected from the pull down list (Presently only Dahua DVR is supported).

Device Address: Specify the IP address of the device (DVR) in this field.

Root Folder: Specify the path to the ftp folder where the user event photographs will be stored. The DVR captures the user event images and stores the same along with the date and time stamp at this location. This path is set from the configuration option of the DVR.

Camera ID: Enter the Camera ID as defined at the device.

In event of a username and password being set at the ftp server, check the FTP login credentials and specify the **username** and **password** as set on the FTP server.

Thanks & Regards,

Technical Support Team – Security Product

Matrix ComSec, Waghodia, India

E-mail: support@MatrixComsec.com

Disclaimer: The information contained in this e-mail and/or attachments to it may contain confidential or privileged information. Unauthorized use, disclosure or copying is strictly prohibited and may constitute unlawful act and can possibly attract legal action, civil and/or criminal. The contents of this message need not necessarily reflect or endorse the views of Matrix Telecom Pvt. Ltd on any subject matter. Any action taken or omitted to be taken based on this message is entirely at your risk. Neither the originator of this message nor Matrix Telecom Pvt. Ltd takes any responsibility or liability towards the same. If you are not the intended recipient, please notify us immediately and permanently delete the message.