

AC3000

AP controller

AC3000 AP controller

Product Description

IP-COM AP controller AC3000 is design to provide network solution for luxury hotel, resort, large enterprise, shopping mall chain etc premise. Adopt of powerful Intel CPU to deliver 8Gbps high capacity forwarding and 3000 APs management capacity. Also Abundant AP management features including concentrate forwarding and distribute forwarding, AP group Setting, WLAN Radio Spectrum Analysis, map plan. auto channel and power assignment, user load balance, Built-in captive portal server enable it to deliver Wi-Fi Marketing features including customerized welcome page and redirect page, 50000 users authentication system, connected device type and user statistic. Otherwise AC3000 can manage AP and AP controller deployed in multi branch or location remotely. All these features help the administrator to install, manage and monitor APs at a single location.



AC3000

- 3000 APs Management
- 50000 Users Capacity
- Centralized and Distribute Forwarding Mode
- Auto Channel Assign
- Auto Power Assign
- Fast Roaming
- Floor Map View

Key Features

- X86 Hardware Platform
- Centralized Manage AP from multi location or branch
- Maximum AP manage number up to 3000
- Max. user authentication number up to 50000;
- Intra-AC, Inter-AP L2 /L3 roaming time less than 50ms
- WLAN Radio Spectrum Analysis to ensure work on best channel
- Airtime Fairness provide equal access to all wireless clients
- Auto channel and power assignment
- Load balance based on the AP cluster
- Captive Portal, Radius Authentication Supported
- Guest device identify, statistics and access behavior analysis

Product Features

Powerful hardware design, Better performance

AC3000 adopt of powerful Intel CPU and X86 software platform, The total forwarding capacity could be up to 8Gbps and it could manage 3000 Aps when it is working in distribute forwarding mode.

Centralize and Distribute Forwarding Modes

AC3000 supports centralized forwarding mode and distributed forwarding mode. When it work in centralized forwarding modes, all wireless traffic will be forward to an AC for processing. Therefore, the forwarding capability of the AC may become a bottleneck. This is especially true on wireless networks where APs are deployed at branches, ACs are deployed at the headquarters, and APs and ACs are connected over internet.

However, when it work in distributed forwarding mode, all wireless traffic will be forward to gateway directly. AC cannot provide traffic control as good as the centralized forwarding mode does. it can also distribute configuration, manage and monitor APs and user.

Radio Spectrum Analysis System

AC3000 features with radio spectrum analysis and optimization system. It is effectively increases the number of concurrent sessions in middle to high-density access, accomplishes streaming media application acceleration and QoS through character and protocol based RF optimization.

Auto channel and power assignment

When deploy APs in a WLAN, adjacent AP should work in different channels to avoid channel interference. However, channels are very rare resources for a WLAN. There are a small number of non-overlapping channels for APs. Therefore, the key to wireless applications is how to allocate channels for APs intelligently. Meanwhile, the adjacent APs will interference each other. The auto channel and power assignment technique can ensure optimal channel and power deploy between APs to deliver best WiFi performance.

Product Features

Intelligent user load balance

Generally, wireless client choose an AP based on the Received Signal Strength Indication (RSSI). Therefore, many clients may choose the same AP with a high RSSI. As these clients share the same wireless medium, the throughput of each client is reduced greatly.

The intelligent user load balance can analyze the connected clients of APs, dynamically determine which APs can share user load with adjacent AP to ensure all APs sharing users among these APs.

Layer-2 and Layer-3 Fast Roaming

AC3000 can work in centralized forwarding and support Layer-2 and Layer-3 fast roaming to solve the inter-subnet roaming problem. The fast roaming functionality allows wireless terminals to roam from one AP to another without following the complete 802.1X authentication process within 50 ms.

Multipurpose Wi-Fi Marketing System

AC3000 integrate with an powerful Wi-Fi marketing system to provide administrator with value-added features including:

- 50000 user captive portal authentication server
- Guest, web, social APPs account, Radius authentication
- Customer welcome page and redirect website
- Connected device identify and statistic
- Connected customer traffic and behavior statistic

Visible network status statistics

AC3000 provide map floor, network topology, online device statistics and analysis, user statistics and analysis etc visible graphic tool. Administrator can view and diagnose network health at a glance.

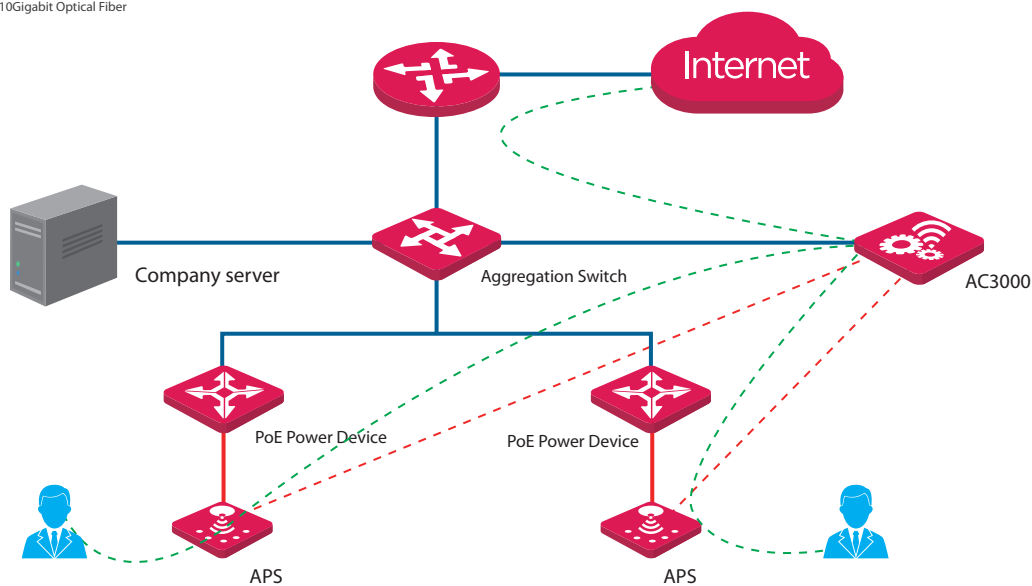
Easy to deploy, Easy to manage

AC3000 adopt of 19 inch rackmount design to mount on the rack perfectly. And you just plug it into the existing network through branch deployment to manage all Aps without changing any network topology.

Application Scenarios

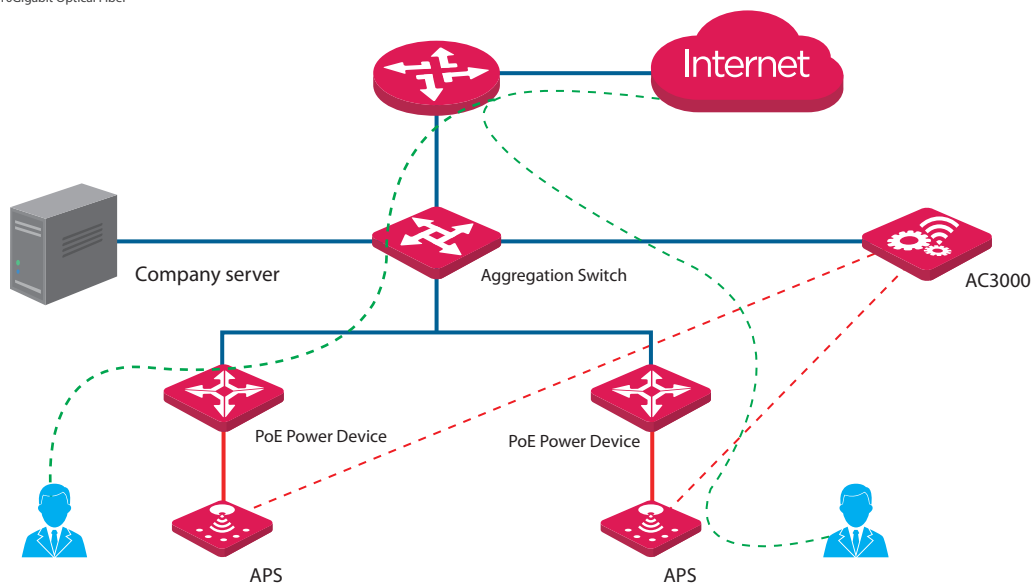
Based on powerful functions of 3000 APs management, 50000 online clients, 4096 VLAN number and maximum 8G bandwidth, AC3000 is the optimum choice for ultra-large scale wireless network application. Following are the classic applications at hotels, enterprises and supermarkets.

- PoE
- Gigabit optical Fiber
- Gigabit/Fast copper wire
- 10Gigabit Optical Fiber



Centralized Forwarding Mode

- PoE
- Gigabit optical Fiber
- Gigabit/Fast copper wire
- 10Gigabit Optical Fiber



Distributed Forwarding Mode

Related Products



AP255

- 2.4GHz 1n 300Mbps
- 86mm EU type wall plate design
- Compatible with PoE 802.3af
- 2*FE LAN, 1*RJ11 port, 1* USB charger port
- Centralized management by AC2000/AC3000



AP515

- 2.4GHz 300Mbps
- IP64 waterproof enclosure
- 7dbi directional antenna
- Compliant with PoE 802.3at
- Centralized managed by AC2000, AC3000



AP365

- 11AC dual band 1750Mbps
- Aesthetic ceiling design
- Compliant with PoE 802.3at
- Two Gigabit Ethernet Port
- Tagging VLAN ID for multi SSID
- 5GHz band steering
- Centralized management by AC2000/AC3000



SE3100

- Maximum user capacity up to 120
- Smart QoS Bandwidth Management
- Multi WAN load balance and bandwidth combination
- PPTP, L2TP, IPsec VPN server and client supported
- Integrated with AP controller feature to manage 16 IP-COM AP
- Built-in captive portal server to push AD and customized user connection time



G3224P

- 24 Gigabit RJ45 ports & 2 SFP ports
- Switching capacity up to 56 Gbps
- Forwarding rate up to 38.69 Mpps
- Maximum PoE power consumption up to 370W
- Supports POE+ IEEE 802.3at/af
- Rackmountable

Product Specification

Product Info	
Model	AC3000
Deployment	Rack mount
Dimension	430*380*45mm
Hardware Specification	
Compliant Standards	IEEE 802.3u/ab
CPU	3.5GHz Intel E3 1275v2
Memory	16GB 1600MHz DDR3
Hardware Driver	500GB
Interfaces	4 * 10/100/1000Mbps LAN
	4 * USB
	1 * VGA
	1* Serial Console
Max Power Consumption	250W
Software Specification	
Deployment Mode	Centralize and Distribute Forwarding Modes
Max AP managed number(distribute forwarding)	3000
Max AP managed number(Centralize forwarding)	512
Max online user capacity	50000
Max VLAN group	512
Wireless Management Features	AP group setting
	Access Point Auto Discovery
	Access Point Auto IP Assignment
	Access Point Device Name Editing
	Access Point SSID Editing
	Access Point Client Limit Editing
	Access Point output power Editing
	Access Point Security Editting (None,WPA-PSK,WPA2-PSK)
	Access Point isolation Editting
	Access Point SSID isolation Editting
	Access Point channel Select
	VLANs for Access Point- Multiple SSIDs
	5G Band Steering editting
	Client isolation editting
	SSID isolation editting
	RSSI threshold for client access editting
Auto channel assignment	
Auto power assignment	
Layer-2 and Layer-3 Fast Roaming	

Product Specification

Software Specification

	Monitor the AP online status
	Wireless Client Monitoring
	Batch AP Reset capability
	Batch AP reboot capability
Wireless Management Features	batch Firmware Upgrade Capability
	Schedule reboot AP capability
	AP failure alarm
	AP traffic alarm
	AP clients limit alarm
	AP&clients list export
Tunnel Management	Manage VLAN, Data VIAN, Manage VLAN and Data VLAN separate
AP Discover	AP auto Discover over Layer-2, Layer-3 and NaT
AP Firmware upgrage	Auto or manual update
AP Maintain	Schedul Reboot or circularly Reboot
AP Status View	Map floor,Network Topology
WiFi Shedule	Switch off WiFi radio or SSID
User Load Balance	Intelligent user load balance between adjacent Aps
Security	WPA、 WPA2、 TKIP、 CCMP
User authentication	Web,Radius
Client wireless access control	Based on device type or mac address
Client Intenet access control	URL domain or ACL
Device Type Identifier	IOS、 andriod、 PC、 other
Rogue AP Detection	Support
Rogue client Detection	Support
Network Settings	DHCP server、 Static Routing、 SNMP
AC management	web (https) 、 telnet、 ssh
AC Mainterance	NTP service、 administrator and guest accout、 diagnose tool
	Built-in captive portal server
	Customerized user Internet access time
	Ad push based SSID and device type
Captive Portal	Customerized welcome page
	Customerized redirect page
	Connected device type statistic
	Connected user behavior statistcIP Setting

Product Specification

Software Specification

System Tools	IP Setting
	System Time & Date
	Firmware upgrade
	Configuring backup and restore
	Device Reboot
	Username and password
	System log

Operating Environment

Operating Temperature	-20 C - 45 C
Storage Temperature	-30 C - 70 C
Operating Humidity	10%–90%(non-condensing)
Storage Humidity	5%–90%RH (non-condensing)
Default Login IP	192.168.10.1
Default username	admin
Default Password	admin
Certification	CCC/FCC/CE/ROHS

IP-COM
World Wide Wireless

IP-COM NETWORKS CO.,LTD.

Tower E3, No.1001, Zhongshanyuan Road,
Nanshan District, Shenzhen, China. 518052
Service: info@ip-com.com.cn
Inquiry: marketing@ip-com.com.cn
Tel: +86-755-27653089